

**Welcome to the**

**Museum of Archaeology and**

**Anthropology**



Supported using public funding by  
**ARTS COUNCIL  
ENGLAND**

*museum of* **maa**  
*and* **archaeology  
anthropology**

**Come inside  
and have a look.**



Supported using public funding by  
**ARTS COUNCIL  
ENGLAND**

**maa**  
museum of archaeology  
and anthropology

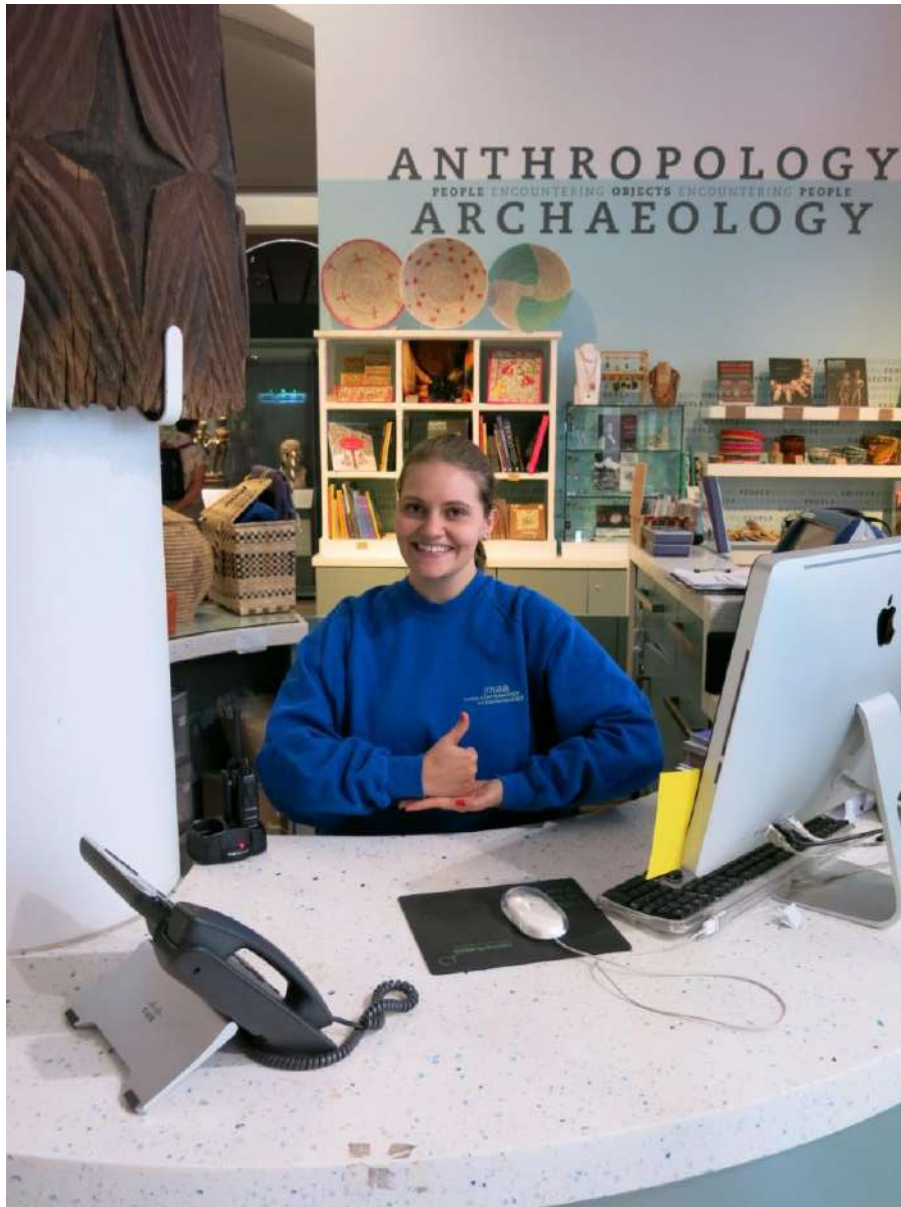
**Sometimes the road  
is very busy.  
We have a quiet door.**



Supported using public funding by  
**ARTS COUNCIL  
ENGLAND**

**maa**  
museum of archaeology  
and anthropology

**There are people  
in blue tops  
who can help you.**



Supported using public funding by  
**ARTS COUNCIL  
ENGLAND**

**maa**  
museum of  
and | archaeology  
anthropology

**There is a shop.  
Sometimes it is busy.  
You can buy things.**



Supported using public funding by  
**ARTS COUNCIL  
ENGLAND**

**maa**  
museum of  
and archaeology  
and anthropology

**Sometimes MAA can be noisy.  
There are ear defenders for you to use.  
This is okay.**



Supported using public funding by  
**ARTS COUNCIL  
ENGLAND**

**maa**  
museum of  
and archaeology  
anthropology

**MAA has lots of interesting things.  
You can look at these things.**



Supported using public funding by  
**ARTS COUNCIL  
ENGLAND**

**maa**  
museum of  
and archaeology  
and anthropology

**Some of these things are very old.  
They were found in the ground.  
They were dug up.**



Supported using public funding by  
**ARTS COUNCIL  
ENGLAND**

**maa**  
museum of **archaeology**  
and **anthropology**



# There are things from Cambridgeshire



Supported using public funding by  
**ARTS COUNCIL  
ENGLAND**

**maa**  
museum of  
and **archaeology  
anthropology**

**There are things  
from all over the world.**



Supported using public funding by  
**ARTS COUNCIL  
ENGLAND**

**maa**  
museum of  
and archaeology  
anthropology

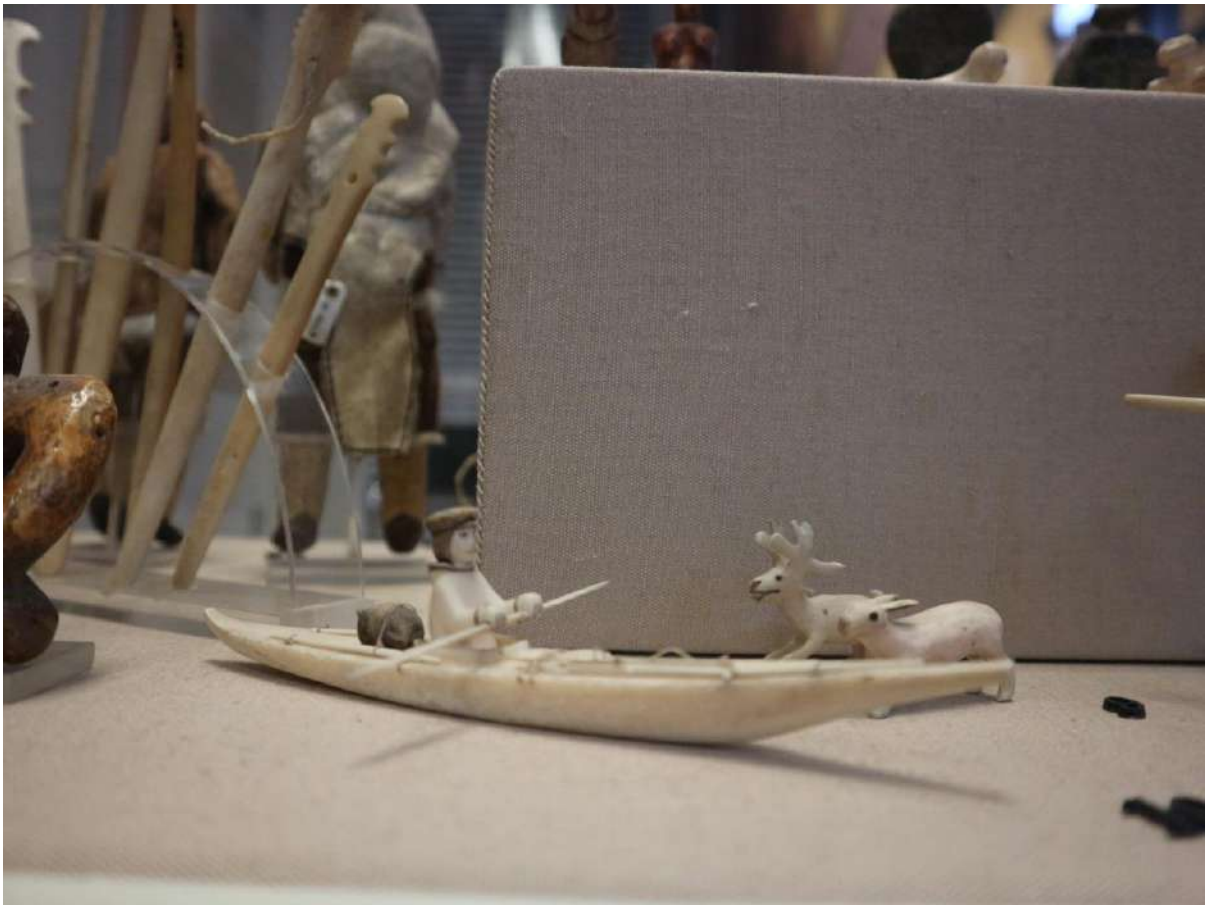
**Some of them  
are very big.**



Supported using public funding by  
**ARTS COUNCIL  
ENGLAND**

**maa**  
museum of archaeology  
and anthropology

**Some of them  
are very small.**



Supported using public funding by  
**ARTS COUNCIL  
ENGLAND**

**maa**  
museum of  
and archaeology  
anthropology

**There is a Totem Pole.  
It is very tall.**



Supported using public funding by  
**ARTS COUNCIL  
ENGLAND**

**maa**  
museum of  
and archaeology  
and anthropology

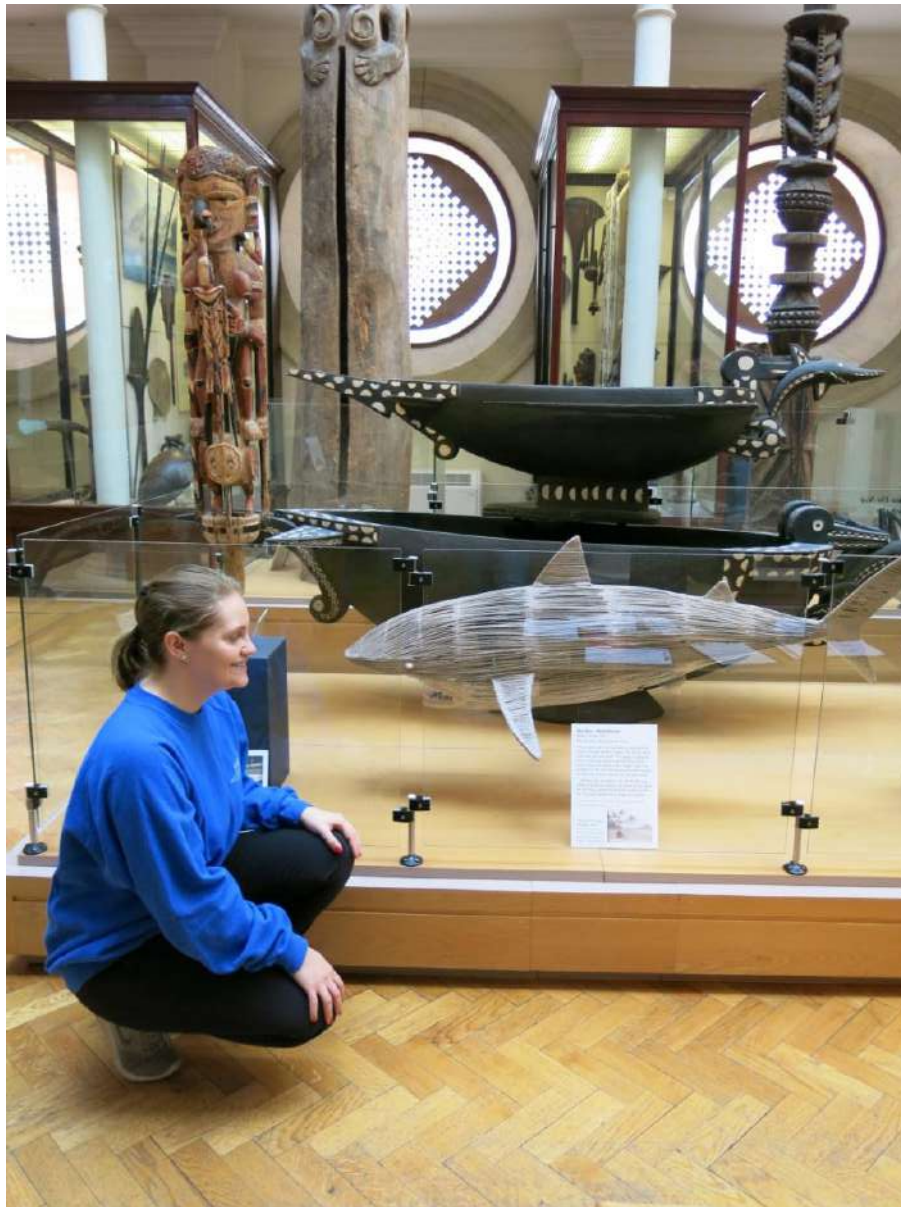
**There is a bear.  
It is very big.**



Supported using public funding by  
**ARTS COUNCIL  
ENGLAND**

**maa**  
museum of  
and | archaeology  
anthropology

**There is a shark.**



Supported using public funding by  
**ARTS COUNCIL  
ENGLAND**

**maa**  
museum of  
and archaeology  
anthropology

**There are masks.  
They are very colourful.**



Supported using public funding by  
**ARTS COUNCIL  
ENGLAND**

**maa**  
museum of  
and archaeology  
anthropology



**There is a canoe.  
It is up high.**



Supported using public funding by  
**ARTS COUNCIL  
ENGLAND**

**maa**  
museum of  
and archaeology  
and anthropology

**There is a Mayan King's head.  
It is from Central America.**



Supported using public funding by  
**ARTS COUNCIL  
ENGLAND**

**maa**  
museum of  
and archaeology  
and anthropology

**There is a lift.**



Supported using public funding by  
**ARTS COUNCIL  
ENGLAND**

**maa**  
museum of archaeology  
and anthropology

**There are stairs.**



Supported using public funding by  
**ARTS COUNCIL  
ENGLAND**

**maa**  
museum of  
and archaeology  
anthropology

**There are toilets.**



Supported using public funding by  
**ARTS COUNCIL  
ENGLAND**

**maa**  
museum of  
and archaeology  
anthropology

**There is a space outside.  
You can run around out here.**



Supported using public funding by  
**ARTS COUNCIL  
ENGLAND**

**maa**  
museum of archaeology  
and anthropology

**There are activities.  
You can do this too.**



Supported using public funding by  
**ARTS COUNCIL  
ENGLAND**

**maa**  
museum of archaeology  
and anthropology

**You can sit down.**



Supported using public funding by  
**ARTS COUNCIL  
ENGLAND**

**maa**  
museum of  
and archaeology  
anthropology



**You can tell us  
if you liked your visit,  
or if you did not.**



Supported using public funding by  
**ARTS COUNCIL  
ENGLAND**

**maa**  
museum of archaeology  
and anthropology

**Goodbye  
and see you again soon.**



Supported using public funding by  
**ARTS COUNCIL  
ENGLAND**

museum of **maa**  
and archaeology  
and anthropology