

University of Cambridge

MUSEUM OF GENERAL AND LOCAL ARCHAEOLOGY
AND OF ETHNOLOGY

TWENTY-FIFTH ANNUAL REPORT

OF THE

ANTIQUARIAN COMMITTEE

TO THE

SENATE

June 2, 1910

Museum Issue
With Ten Plates

Reprinted, with additions, from the Cambridge University Reporter

1910

University of Cambridge

MUSEUM OF GENERAL AND LOCAL ARCHAEOLOGY
AND OF ETHNOLOGY

TWENTY-FIFTH ANNUAL REPORT

OF THE

ANTIQUARIAN COMMITTEE

TO THE

SENATE

June 2, 1910

Museum Issue
With Ten Plates

Reprinted, with additions, from the Cambridge University Reporter

1910

CURATOR:

BARON ANATOLE VON HUGEL, M.A.

CONTENTS.

REPORT.....	5
List of Donations to the Museum Accessions Fund	6
List of Donations to the New Museum Building Fund.....	7
APPENDIX :	
List of Accessions from January 1 to December 31, 1909	
I. Archaeology	
British:	
Prehistoric.....	8
Late Celtic.....	8
Roman.....	8
Saxon.....	8
Mediaeval and Later	9
Foreign:	
Asia, Africa, America.....	10
II. Ethnology:	
Europe.....	10
Asia (Continent and Islands)	10
Africa.....	10
Australia.....	10
Oceania:	
Melanesia	11
Polynesia	12
III. Books:	
Archaeology.....	13
Topography and Architecture History and Genealogy...13	
Biography	14
Guide Books	14
Ethnology, &c.....	14
Travels.....	14
Geography	14
Catalogues, &c.....	14
Museum Publications	15
Reports	15
Works of Reference	15
Serial Publications	15
IV. Photographs and Prints.....	15

LIST OF ILLUSTRATIONS.

PLATE	I	New Museum: Block I.
	II	Two flint daggers Jackdaw Hill near Leighton Buzzard, Bucks., 1837, and Prickwillow near Ely, 1907
	III.	Late Keltic bronze ornaments etc. Newnham, Cambridge, 1903
	IV.	First Century Hoard of Late Keltic and Roman metal work Santon Downham, Suffolk, 1897
	V.	“ “ “ “
	VI.	“ “ “ “ Reproduced from <i>Proceedings Cambridge Antiquarian Society</i> , Vol. XIII
	VII.	Maori food funnel
	VIII.	Maori feather box (oblong).
	IX.	Maori feather box (boat-shaped).
	X.	Preserved human head. Ahuarina Tribe. Rio Apago, Brazil.

The cost of preparation of Plate II has been defrayed by the Cambridge Antiquarian Society, of Plates III and X by the Curator, and of Plates VII, VIII and IX by Professor Bevan. For Plates IV, V and VI the Museum is indebted to the Council of the Cambridge Antiquarian Society, who have kindly placed the blocks at the disposal of the Committee.

Report of the Antiquarian Committee for the year 1909

MUSEUM OF ARCHAEOLOGY AND OF ETHNOLOGY,
June 2, 1910.

The ANTIQUARIAN COMMITTEE beg leave to present their Twenty-fifth Annual Report to the Senate.

NEW MUSEUM. It is a great satisfaction to the Committee to be able to announce that, thanks to the generous donations made to the Building Fund during the past twelve months, the new Museum is now in course of erection. Building operations were begun at the close of the year, the contract with Messrs Kerridge and Shaw, Builders, being signed by the Vice-Chancellor on December 18, 1909; and in the spring of the current year a foundation-stone was laid, bearing the following inscription:

“ This Foundation-Stone of the first block of the Museum of Archaeology and of Ethnology, the generous gift of many friends, was laid by Eliza Margaret Baroness Anatole von Hugel on May 14, 1910, the twenty-seventh year of her husband's holding the office of Curator.”

Owing to the national mourning, the invitations which had been issued were necessarily cancelled, and as the progress of building operations did not admit of further delay, the stone was laid in the presence of the Vice-Chancellor, members of the Antiquarian Committee, of the Council of the Cambridge Antiquarian Society, and of the Board of Anthropological Studies, and of a few special benefactors. It is hoped that this first block of the new building may be ready for occupation in the spring of 1911. Of this block a perspective drawing by the architect, Mr T. G. Jackson, R.A., is now on view at the Royal Academy. The design is in conformity with the style of the adjoining Squire Law Library and the Sedgwick Memorial Museum, which are also his work; and the building, when finished, will complete this first court of new Museums and Schools on the Downing Site.

The cost of the entire building is estimated at considerably over thirty thousand pounds; but the need for extended accommodation has become so urgent that it has been decided to erect the building in sections, as the sum required for each is obtained.

Block I contains ample laboratories, store-rooms, and a lofty hall with surrounding gallery; this will provide for the safe keeping of the existing collections, but will not afford more than a small fraction of the space required for their exhibition (*see* Plate I).

Block II, the main Museum, will provide three stories of spacious Exhibition Galleries, with a loft above, rooms for the Curator and the teaching staff, and a central tower containing the main entrance and staircase.

The third and last block, of which the detailed plans are reserved for future consideration, will contain the library, lecture rooms, and students' rooms.

The new building, inclusive of at least the second block, has now become a matter of vital importance to the Department, as is shewn by the deplorable conditions existing in the present Museum, where the congestion renders work of every sort extremely difficult, if not impossible. This building has now become almost as much a place for mere storage as the hired warehouse at Newnham, and the collections, stacked as they are, are not only inaccessible for purposes of study but are in constant danger of serious damage or deterioration. The growth of the Museum by gifts has also undoubtedly been much discouraged, as may be seen by the smallness of the appended list of direct donations to the collection.

The cost of Block II is estimated at £19,000, of which £3,800 has to be funded for the upkeep of the building.

FITTINGS. NO new furniture or fittings have been purchased, the amount thereby saved from the grants received for maintenance and furniture being placed to the credit of a Furniture and Fittings Fund for the new Museum.

WORK DONE. During the year much of the Curator's time has been taken up in furthering the Appeal.

Thirty-two earthenware vessels from the local collections have been restored by the Assistant, and the Roman, Saxon, and Mediaeval series of pottery have thus been enriched by a number of exceptionally interesting specimens.

A large number of small objects from the antiquarian section have been permanently mounted and labelled.

ACCESSIONS. The thanks of the Committee are, as in the past, due to a few friends of the Museum, who have generously continued their yearly support to the Accessions Fund; but, if the many gaps in the collections are ever to be filled, fresh subscribers must come forward. Objects are rapidly becoming scarcer as western civilization extinguishes native art and public and private collectors exploit ancient sites to enrich the collections in which they are interested; and the market value of both archaeological and ethnological objects is consequently rising by leaps and bounds.

Archaeological: Among a number of interesting objects which the Cambridge Antiquarian Society's grant has enabled the Curator to acquire for various departments of the local collection, a large flint dagger, finely chipped, with nicked sides, from Burnt Fen near Ely, deserves very special mention, as being the first example of its kind which has been offered to the Museum during the twenty-five years of its existence (*see* Plate II, fig. 2).

Mr F. F. Tuckett, F.R.C.S., has kindly added to the small American series of stone implements, a large javelin-head of bayonet shape, found at Georgian Bay, Ontario; whilst the African collection has been increased by Professor Bevan's gift of a set of six haematite celts, found by Signor M. Ribotti in the Uilili River valley, 1908.

Ethnological: Asia. To Captain H. R. Lawrence the Museum is indebted, among other gifts, for a comprehensive series of personal ornaments in base metal, worn by the lower classes of the Delhi—Lucknow—Aligarh districts. This collection derives special value from a detailed catalogue with native names in Urdu, which the donor himself has kindly compiled.

Dr Venn, F.R.S., by a donation to the Accessions Fund, has added to the collection an old set of eleven highly-finished marionettes, painted and gilt, used in the Javanese Shadow-plays.

Africa. From Uganda the Rev. John Roscoe, M.A., has once more sent a valuable consignment, which includes a number of ancient objects for ceremonial and religious use¹.

Australia. Important additions have again been made by Dr R. H. Marten of Adelaide to the extensive collection of Australian native manufactures which the Museum owes to his generosity.

Oceania. Professor Bevan's generous subscription to the Accessions Fund has made it possible to acquire for the Maori series one of the scarce ceremonial food funnels, of which the New Zealand Museums do not possess a single example, a set of four finely carved feather boxes, three jade ornaments of exceptional beauty, and other objects (*see* Plates VII—IX).

Library. Some valuable works on Architecture and Archaeology have been bequeathed to the Museum by the late William Milner Fawcett, M.A.

The authorities of the American Museum of Natural History have presented a set of their Anthropological Publications including those relating to the Jesup North Pacific Expedition.

A copy of Mr Edgar Thurston's recently published *Castes and Tribes of Southern India*, 7 vols., 8vo., has been presented by the Government Press, Madras.

¹ The enumeration of these objects is held over to next year's accessions list so that they may be incorporated with a last installment of the Roscoe Collection now on its way from Uganda.

ACCESSIONS FUND. The following subscriptions and donations have been received during the past year:

	£	s.	d.
Professor Bevan.....	100	0	0
The Cambridge Antiquarian Society.....	25	0	0
John Venn, Sc.D.	10	0	0
The Curator	10	0	0
W. H. R. Rivers, M.A.	1	1	0

BUILDING FUND. Since the issue of the last Annual Report, May 6, 1909, £7,392. 1s. 0d. has been subscribed up to date, which with the sum of £10,870 already acknowledged, makes a total, inclusive of accrued interest, of £18,262. 10s. 0d.

Of this sum £7000 has been contributed by members of the Foster family to the Building Fund, and £5000 has been bequeathed by the late Mr J. B. Andrews to the Museum.

In accordance with the stipulations of the Financial Board, £12,500* has been allocated to cover all expenses connected with the erection of Block I, and £600 to a Furniture and Fittings Fund for the same block. Thus, as will be seen by the appended list, £5249 are in hand of the £19,000 required for Block II, leaving a sum of £13,751 still to be provided.

List of Donations for Block II

	£	s.	d.
Mrs Edward Rawlings (2 nd and 3 rd donations).....	2000	0	0
Mrs Walter Foster (2 nd donation).....	1000	0	0
C. F. Foster, Esq. (2 nd donation).....	1000	0	0
Mrs Bird Foster.....	100	0	0
Charles Cave, M. A., Trinity (2 nd donation).....	100	0	0
R. E. Froude, Esq., F. R. S.....	100	0	0
The Vice Chancellor.....	100	0	0
T. Bond Sprague, LL.D., St John's (2 nd donation).....	50	0	0
Sir David Salomons, Bart., M. A., Gonville and Caius (3 rd donation).....	50	0	0
T. Musgrave Francis (2 nd donation).....	25	0	0
Baroness Anatole von Hugel (2 nd donation).....	25	0	0
Professor Burkitt (4th donation).....	15	0	0
Baron Friedrich von Hugel (2 nd donation).....	15	0	0
Sir Henry Bulwer, G.C.M.G. (3 rd donation).....	10	0	0
Lady Jebb (2 nd donation).....	10	0	0
In smaller sums	12	0	0
By accruing interest	537	13	3

The Committee have pleasure in availing themselves of this opportunity to express their gratitude to all who have so generously contributed to these Funds.

ACCOUNTS. The accounts for the year 1909 have been audited by the Committee. (*See University Accounts, Reporter*, p. 100.)

The list of Accessions to the Museum from January 1 to December 31, 1909, is given in the Appendix.

A. J. MASON, *Vice-Chancellor*.
 H. P. STOKES.
 J. VENN.
 J. W. L. GLAISHER.
 WILLIAM RIDGEWAY.

J. E. FOSTER.
 W. H. R. RIVERS.
 S. C. COCKERELL.
 F. G. WALKER.

* This sum includes £1150 provided by the University (£1000 allocated by the Chancellor from unallotted balance of the University Association Benefaction Fund, and £150 from the Financial Board for sketch plans), £4000 from the Andrews Bequest, £3000 from members of the Foster family, and £4350 in smaller subscriptions.

APPENDIX.

I. LIST OF ACCESSIONS FROM JANUARY 1 TO DECEMBER 31, 1909.

*** In those cases in which the objects have not been presented directly, but have been purchased with money subscribed to the Museum Accessions Fund, an asterisk is prefixed to the name of the donor.

I. ARCHAEOLOGY.

BRITISH.

PREHISTORIC.

STONE.

(Unless otherwise specified, the implements are made of flint.)

RIVER-DRIET.

1—21. Twenty-one roughly fashioned implements of various forms and sizes. Three Hills, Mildenhall, S. +

*C. A. S. ++

22—25. Four: one triangular, tongue-shaped, finely chipped (5"0 x 3"2), two smaller, oval, of rougher make, and a trimmed flake. Kempston and Biddenham, Beds. *W. J. Spence, M.D.*

26—51. Twenty-six of various forms, including some fine tongue-shaped examples. Dunbridge, Hants, 1909. *Purchased.*

CELTS.

52. One chipped, triangular, with sharp sides (4" x 1".9);

53. One chipped, partially ground, oblong, with sharp sides (5".3 x 2".2); *and*

54. One ground, of greenstone (cutting edge damaged). Cranwich, N., 1909;

55. One polished, very finely finished, elongate with flat sides, convex faces, and rounded cutting edge (5"1 x 1".7). Reach, C., 1907;

56. One polished, pear-shaped, with flat sides (3".6 x 2".1). Bottisham, C., 1909; *and*

57. One ground, large, elongate, with convex faces tapering towards the butt, and rounded sides and cutting edge (7" x 2".4). Lakenheath, S., 1909. *C. A. S. [Nos. 52-57.]

58. One polished, with square sides and rechipped, truncated, butt (3"-4x2"). Bateman's, Burwash, Sussex, 1909. *Rudyard Kipling, Hon. Litt.D.*

ADZES.

59. One carefully chipped and partially ground, broad, flat, with sharp sides and rounded cutting edge (butt end damaged). Cranwich, N., 1909. *C. A. S.

CHISELS.

60. 61. Two finely finished examples: one spindle-shaped with rounded ends, ridged faces, and sharp sides (5".1 x 1".1). Icklingham, S., 1909; and one smaller, slim, with rounded faces and sides, having one pointed and one rounded end (3".7 x 0"6). West Wretham, N., 1909. *C. A. S.

+ The letters C., S., and N., printed after the names of places, indicate, respectively, the Counties of Cambridgeshire, Suffolk, and Norfolk.

++ C. A. S. stands for the Cambridge Antiquarian Society.

FABRICATORS.

62—70. Nine of various sizes and forms, including some nicely chipped examples. Suffolk and Norfolk. *C. A. S.

BORERS.

71—74. Four: one larger, of elongate form, two smaller with expanding bases; and one large, ridged, with oval base chipped along the entire edge. Suffolk and Norfolk. *C. A. S.

KNIVES.

75. One large, oblong, with convex back (3"4x2".3). West Tofts, N., 1909; *and*

76. One stout, oval, of translucent flint, chipped with irregularly notched edges (2"7 x 1"-6). Mundford, N., 1909. *C. A. S. [Nos. 75, 76.]

DAGGERS.

77. One large broad blade with flat boldly chipped faces and pointed tang, the sides bearing four notches (7".3 x 2".7). Prickwillow near Ely, 1907. (*See Plate II, fig. 2.*) *C. A. S.

JAVELIN-HEADS.

78. One leaf-shaped, pointed, with one side chipped so as to form a shoulder (2" x 1"). Mildenhall, S., 1909; *and*

79—81. Three triangular: one boldly chipped, large, elongate with square base (2"6 x 1"5). Lakenheath, S., 1909; one roughly chipped, broad, with cusped base (1"-6 x 1"5). Tuddenham, S., 1909; and one more elongate. Santon Downham, N., 1909. *C. A. S. [Nos. 78—81.]

ARROW-HEADS.

82—85. Four, tanged and barbed: three triangular, two with convex faces and flat backs, and one symmetrical, with convex face and back (1"1 x 0"9); and one broad, of curved outline, with long barbs and tang. Suffolk and Norfolk;

86. One, tanged, elongate, with convex faces, sloping shoulders, and long tang (1"5 x 0"-5). Eriswell, S., 1909;

87—88. Two, leaf-shaped: one thin, finely chipped, with sharp point and rounded base (1".7 x 0"-7). Eriswell, S., 1909; and one with ridged back and square base (roughly chipped). Tuddenham, S., 1909;

89. One, lozenge-shaped, large, with rounded shoulders (1".4 x 0".9). Lakenheath, S., 1909; *and*

90—92. Three triangular: two with convex faces and

flat backs; and one larger, symmetrical, with convex faces. Undley, S., Santon Downham and Feltwell, N. *C. A. S. [Nos. 82—92.]

BRONZE.

93—97. Five socketed celts with single loop, square sides, and slightly expanding cutting edge : three plain with

heavily moulded rim and neck-bead; one flatter, shewing only a faint rim-bead; one decorated on both faces with a single beaded “ wing-design,” and a pair of bold beads round the long neck (3" x 1"7); and

98. The base of a straight-bladed knife (with portion of blade attached) consisting of a plain oval socket with a large drill-hole. Lakenheath, S., 1909. *C.A.S. [Nos. 93—98.]

LATE CELTIC.

99. A fig-shaped urn of hard clay, faced dark brown, with taper beaded base, and mouth provided with a narrow, collar-like rim, decorated round the shoulders with a

wide band of eight lines of indented squares medially divided by a plain flat groove (6"-6 x 7"0). Burwell, C., 1908. *The Rev. G. J. Lloyd, M.A.*

ROMAN.

100, 101. A square bronze buckle with a long, flat chape, bearing incised decoration and battlemented edges (2" x 5"); and a ring (? buckle) of bronze, with a flat crossbar, shewing in relief an animal's mask (0".9 x 0"7). From a field adjacent to the Roman villa, Icklingham, S., 1909;

102. A tall slim drinking-cup, the four sides shewing unusually deep oval indentations: the upper portion painted slatey-blue, the base and cylindrical foot red (6"-6 x 2"-8). Cambridge, 1909;

103. A small egg-shaped urn with flat beaded base and

tall beaded rim, of white clay faced with lustrous dark brown slip (5"0 x 4"-3). Cambridge, 1909; and

101—107. Four vessels : two small urns, one dark grey, tall, egg-shaped, the shoulders incised with a grooved band (4"-0 x 3"6), and one lighter grey with very wide mouth (2"-9 x 3"-3); one small wide-rimmed deep bowl with flat bottom, of grey clay (4"4 x 1"8); and a deep flat-bottomed saucer of a brownish-grey colour (6"3 x 1"-5). Trumpington, C., 1909. *C. A. S. [Nos. 100—107.]

SAXON.

108. A small plain globular urn of dark clay with tall rim (4" x 2" x 4"-5). Found with bronze ornaments at Lakenheath, S., March 1897; and

109. A very roughly fashioned deep bowl with sides

sloping outwards from the flat base towards the mouth (3"-2 x 5"-7). Found with other Saxon remains in the Madingley Road Cricket Field, Cambridge, 1888. *C. A. S. [Nos. 108, 109.]

MEDIAEVAL AND LATER.

110. An annular bronze brooch, the moulded face decorated with alternate plain and incised sections (d. 1"1). 17th century. Bury St Edmunds. *Purchased.*

111. Portion of a spur, brass gilt, bearing incised decoration. 17th century (? French). Ely, 1909. *S. Montague Benton, Esq., B. A.*

112. A finely moulded brass spoon with fig-shaped bowl stumped inside with a rose, and a flat stem with bevelled sides and ornate seal top (6"5 x 1"7). 17th century. Saffron Walden;

113. 114. Two pairs of calipers: one of bronze with straight arms (one missing) with nickel edges (2"-6); and one ornate, of brass, with curved moulded arms, inscribed “And. Elton” (3"4). 16th and 17th centuries. London and Bury St Edmunds; and

115. A leather-worker's “race” of iron, with beaded, square-sided neck (1.5"4). 17th century. London, 1909. *C. A.S. [Nos. 112—116.]

116. The ornate hexagonal socket of a bronze candlestick (1.6"-3). 17th century. Found near the summit of the Puy de Dome, Auvergne, 1907. *Baroness A. von Hugel.*

117—119. Three varieties of steel candle-snuffers, English. 18th and 19th centuries. *E. H. H. Guillemard, M.D.*

120. A double key in bronze; the large square webs which spring from the same side of the short, moulded stem, bear open work of different designs (1.4"-5). 17th century. Cambridge, 1909;

121, 122. Two ornate iron window-fasteners with perforated plates and moulded catches: one larger shewing ornate open work. 16th century. Saffron Walden;

123. A finely carved poppy-head, the terminal of an oak stall of foliate fleur-de-lys pattern (15"5 x 12"-2). 16th century. Bury St Edmunds; and

124. Two sections of a carved oak panel-framing, one bearing the date 1657 (21"-5 x 4"6). Herringswell Church, N. *C. A. S. [Nos. 120—123.]

125. A box: book form, divided into four compartments with lids covered in coloured straw-work (8"-4 x 5"9). French, late 18th century. *F. H. H. Guillemard, M.D.*

126. The old sign of the Madingley Road Inn “The Man loaded with Mischief” : a framed mahogany panel (47"x35") shewing two scenes painted in oils (on front and back) by the grandfather of the donor, *M. Leach, Esq.*

127, 128. Two jugs: one large, of grey clay, plain with lipped mouth and rough fluted handle (11"x8"-3); and one smaller of reddish-green glazed clay with short neck and wide mouth, the body roughly stamped with lines of horse-shoe-like marks, the cylindrical bow handle bearing deep oval depressions (8" x 7"3). 16th century. Aldreth Fen, C. *C. A. S.

129. A deep rounded oblong dish of earthenware, glazed buff and shewing red stripes (15"8 x 12"-3). Cambridge. *Purchased.*

FOREIGN.

130—143. Fourteen roughly chipped stone adzes, shewing several forms, including one partially ground example. Madras, India. *W. H. D. Rome, Litt.D.*

144. A flat, pear-shaped stone implement (? palaeolithic). Cuddapah, Madras, India. *W. J. Spence, M.D.*

145—151. Seven implements of haematite: six adzes with rounded sides and roughened butt ends, including three finely ground of various forms (3"2 x 2"0, 3"6 x 1"-8, 7"2 x 2"5); and one small pounder. Valley of the Uilili, Congo. Found by Signor Millo Ribotti, 1907—1908. **Pro* fessor Bevan.

152—193. Forty-two stone implements, viz.: thirty-nine selected spear and arrow-heads, of quartzite and sandstone : four tanged and barbed of various sizes and forms, three tanged, nine leaf-shaped, three triangular with cusped bases, and twenty miscellaneous (three of crystal) with basal nicks, one shewing a boldly serrated edge; two small pebble hammer-stones ; and a roughly chipped axe. Amelia, Co. Virginia. *F. H. H. Guillemard, M.D.*

194. A stone javelin-head (polished), bayonet-shaped, with boldly ridged back, and bevelled lower surface (14"-9 x 1"4). Georgian Bay, Ontario. *R. F. Tuckett, Esq.*

II. ETHNOLOGY.

EUROPE.

195. A pair of sandals made of oblong pieces of leather. Aragon, Spain. *W. L. H. Duckworth, M.D., Sc.D.*

196. A spoon of horn with oval bowl and pointed handle, latter carved, and dated 1908. Reykiavik, Iceland. *Miss B. S. Phillipotts.*

197. Child's toy : a pair of dancing figures with jointed limbs nicely finished in painted wood. Early 19th century. *F. H. H. Guillemard, M.D.* the

INDIA.

198. The fittings of a *Brahui* hunter's belt, consisting of (1) a pair of ornate leather powder flasks, (2) an iron powder measure, (3—5) three leather pouches (one for flint and tinder), and (6) a steel (for flint) with (7) a hook—to attach it to belt—both being in ornate ironwork. Mastung Valley, Baluchistan;

199—251. A series of fifty-three personal ornaments, chiefly in base metal (white) as worn by the poorer classes.

For hair : three chains and three ornaments;

For ears : ten pairs of rings and studs;

For neck : ten necklets and one pendant;

For hand: three thumb and one finger rings;

For wrist: seven bracelets;

For upper arm : two bands;

For ankle : five anklets;

For foot: eight toe-rings, etc.

Worn throughout Dehli—Lucknow—Aligarh Districts ; and

252. A set of plain, lacquered chessmen. Dehli. *Captain H. R. Lawrence, B.A.* [Nos. 198—252.]

LIU-KIU ISLANDS.

253. A banjo-like instrument with oval body (covered

ASIA.

with snake skin) the long straight stem lacquered black (34"4 x 7"). Liu-Kiu Islands. *F. H. H. Guillemard, M.D.*

ANDAMAN ISLANDS.

254—256. Three bows: one large, with incised decoration (79"), and two small (slimmer) plain (69") and five arrows with reed shafts; two with detachable broad-bladed iron heads, the necks armed with a single barb, for pig hunting, and three with single barbed iron heads, for shooting fish. Andaman Islands. *Captain A. R. Hulbert, R.N.*

NICOBAR ISLANDS.

257. The image of a Nankowry youth carved in light wood, the face being painted white, standing with raised right arm (20"*3). Used for propitiating the evil spirit during the last illness of the youth depicted. *Captain Arthur R. Hulbert, R.N.*

JAVA.

258. A set of eleven marionettes cut in leather, of elaborate design and delicate workmanship, illuminated in gold and colours. The handles and strengthening ribs of six are of moulded horn, of the others of wood. Largest, 27"x13"5; smallest, 7"2 x 9"-4. Java. **John Venn, Sc.D.*

AFRICA.

259. A straight cylindrical wooden club with rounded conical head bearing vertical grooves (24"). Masai Land. *Mrs Buckley.*

260, 261. Two flexible bangles (*sabo*) of spirally twisted wire, of copper and brass, and of copper and iron. Bukoba District, German East Africa. *A. C. Haddon, Sc.D.*

262—264. Three Bageshu shields of stout hide: two oblong, one very large, the face decorated in repousse with concentric rings (72" x 18"); and one oval, smaller, with roughly striated face;

Eighty-eight weapons, implements, etc., viz.:

Forty-five spears.

(a) Cut in the solid:

274, 275. Two plain with slightly expanding flattened points; and 276—278. Three slim with cylindrical pointed heads.

265—268. Four plain wooden bows ;

269, 270. Two leather-bound bamboo quivers filled with arrows; one cylindrical box (?containing food-stuff) tied up in leaves; and

271. A stick with conical ends (?use). Mount Elgon District, Uganda. *The Rev John Roscoe, M.A.* [Nos.262—271.]

272. An oblong of undyed bark-cloth (72" x 56"). Inhambane, Mozambique. *M. Clark, Esq.*

273. A pointed oval shield of zebra skin used in hunting (24"-4 x 14"-5). Zululand. *F. H. H. Guillemard, M.D.*

AUSTRALIA.

(6) Composite:

(1) With hard wood shafts:

279, 280. Two with heavy convex-faced points; and 281—283. Three with lanceolate wooden blades to the faces of which are lashed single wooden barbs;

(2) With reed shafts (for use with throwing stick):

284—201. Eight with stone heads set in resin sockets: two elongate, of slate, and six triangular and tongue-shaped of quartzite; *and*

292. One with green glass head: a flat, leaf-shaped blade. Nineteen with taper barbed wooden heads, viz.:

293—296. Four double-edged, symmetrically barbed (two with close-set teeth);

297—309. Thirteen with one-sided barbs, long thornlike to short saw-like, set widely and closely;

310, 311. Two armed with a pair and one with three one-sided barbed points; *and*

312—318. Seven with heads composed of single, twofold, and treble slim spikes of bone. Many of the above spears are decorated with paint. North and Central Australia.

Five spear-throwers, viz.:

319. One *Nulliga* of the *Waage* tribe: slim cylindrical shaft, the haft-end bearing a tassel of human hair. Central Australia;

320—322. Three stiff, lath-like, with convex faces and nicked spatula-shaped haft. Northern Territory; *and* 323. One flexible, lath-like, with ornate resin pommel. ?West Australia.

Nine Boomerangs, viz.:

324—328. Five wide slightly curved with convex faces : three (one large) bearing various incised patterns, Queensland, and two stout with grooved faces, painted with ochre bands. Central Australia;

329. One very large angular; with convex faces, painted with white rings. Queensland ;

330, 331. Two small, slim crescentic, with boldly incised peculiar designs. ? West Australia ; *and*

332. One "beaked": stout with convex faces, with one end expanding into a lateral peak, painted ochre, spotted white. N.W. Central Australia.

Eight clubs, viz.:

333. One, for throwing, with fig-shaped head and slightly curved taper shaft, incised with deep grooves and rough diagonal lines (18"-4). ?Victoria;

334, 335. Two slim, cylindrical, swelling towards the sharply pointed heads and tapering towards the pointed hafts, head and shaft very finely grooved, handle showing a roughened band, one 22"-1 x 1"-6, the other stouter and shorter. Queensland;

336. One " fighting-stick " (also used for digging) with rounded end, slightly curved shaft boldly grooved throughout (30"-8). West Australia;

337, 338. Two cylindrical fighting-clubs, used by women, with pointed ends: one grooved throughout (48"6x2"), and one smooth with roughened grip (44"-6 x 2"-1). West Australia;

339. One long, flat-bladed club with convex faces, rounded point, tapering towards the flattened cusped butt- end, which is bound with string, the blade being decorated in white paint (61"2 x 3"1). Northern Territory; *and*

340. One heavy " sword," with flat pod-shaped blade and small tang-like haft, the latter painted black (63"1 x 3"-9). Geraldton, Johnston River, Queensland ;

341. An elongate oval shield with convex face and concave back, both faces being grooved and painted light red (25"-1x7"7). Central Australia;

342. An adze (*dowak*), with rounded, grooved, curved haft with pointed end, and head, formed of an oval lump of resin, set with a trimmed stone flake (23"-3). West Australia;

343—345. Three sacred sticks (*churinga*) of the *Arunta* tribe : flat, lanceolate, with one perforated end, two incised with concentric rings, the other with a band of interlaced ovals (7"-4x1"-1 to 8" 3x0"-9);

346. A small spherical, netted bag (stuffed with European cloth) with string carrying loop (?a charm);

347, 348. Three shoes of Emu feathers: one pair with braided openings, and one shoe with network of human hair string;

349. A bundle of prepared skins (? of fish) tied up with grass lashings ; *and*

350. A strip of raw Eucalyptus tree bark. Central Australia. *R. H. Marten, M.D.* [Nos. 274—350.]

Nine spear-heads, finely chipped, in glass of various size and form, viz.:

351—356. Six : four of green and two of white glass. Queensland. *E. W. Williams, Esq. ; and*

357—359. Three (two green and one white). Lagrange Bay, West Australia. *F. F. Tuckett, Esq.*

360. A boldly curved, flat, boomerang. Australia. *F. H. H. Guillemard, M.D.*

361. A heavy leaf-shaped club with ridged blade ; incised on both faces with multilinear zig-zag bauds, merging into a short cylindrical haft (30" x 4"*4). ? Victoria. **Professor Bevan.*

OCEANIA.

MELANESIA.

NEW GUINEA.

A set of forty-five selected objects from Papua, viz.:

362. A woman's fibre dress with wide plaited waist-band and very long fringe, dyed various shades of brown ;

363, 364. Two combs: one carved in wood with peaked incised top, and one composite of palm-wood with ornamented lashings;

365. A string necklace of sago-palm fibre dyed orange ;

866. A nose piercer of bone ;

367. A lobe-enlarger of heavy wood (inverted U-shape) with carved ends (2"-6 x 2"-5);

368. A dagger of cassowary bone; the bevelled face is filled with resin and studded with coyx seeds;

369. A beheading knife of bamboo with incised blade, the haft being enclosed in plaited string decorated with coyx seeds (17" x 2"-7); *and*

370, 371. Two head-carriers: rattan loops, with flat, dumb-bell shaped, cross-bars incised with human masks, etc.;

372—399. Twenty-eight wooden arrow-heads: including seventeen carved, showing as many distinctive patterns, and one with large blade of bamboo;

400. A coconut-husker of palm-wood with spatula- shaped handle (15"-4 x 1"-1);

401. A fibre sago-strainer : a bag of clastic plait-work (17"-5 x 5");

402. A jew's harp of incised bamboo ; *and*

403—406. Four human figures of wood ; two are carved in the flat and picked out in black, white and red: in one the arms form loops and the legs a spike (15"8 x 2".8), and in the other (10"4 x 1"-2) the arms and body are shown as a double hoop ; *and* a pair (11"*7 x 1"-7) carved in the round, much conventionalised, the trunk—which is set on a stout rounded spike—bearing a pair of lateral perforations. Bamu River, Papua. *John Cowling, Esq.* [Nos. 362—406.]

407, 408. Two clubs, with large roughly fashioned discoidal stone heads; the long ill-finished shafts, with carved conical butt-ends, bear plaited collars decorated with feathers. Fly River. *W. L. H. Duckworth, M.D., Sc.D.*

409. A hemispherical bowl of dark brown clay, showing on the face, in relief, a pattern of zig-zags arranged in panels. **The Curator*.

410. A wooden head-rest, carved in the solid: the crescentic rest, with truncated carved ends, supported on a square-sided splay foot (7"x4"). Jobi Island. *F. H. H. Guillemard, M.D.*

411. A turtle-shell ornament of peculiar crescentic form bearing a serrated edge (1".8 x 1".1). Torres Straits. *Purchased*.

412. A large shallow basin, cut in hard wood, with wide flat rim, bearing an ornamental band on the outer edge, and a pair of ornate perforated ridges for suspension cords (d. 27"x6). Trobriand Islands. *R. H. Martin, M.D.*

413. A stout oval basin: the flat rim carved with a zig-zag band (10".4 x 6".5). Trobriand Islands. *Mrs Basil Hammond*.

BISMARCK ARCHIPELAGO.

414. A paddle of hard wood, the flat pointed blade carved with a human mask on one face and on the other with a taper central ridge, the carving picked out in red and black (60"-2 x 6"). New Britain (Neu Pommern);

415. A club of palm-wood, with oar-shaped expanding head, shaft of hemispherical section, and square, bevelled, butt encased in close string plait-work (38"x2 x 5"x6). New Ireland (Neu Mecklenburg); *and*

416. 417. Two slim palm-wood spears: the butt-end encased in a length of incised bamboo (85"). New Hanover. *F. H. H. Guillemard, M.D.*

SOLOMON ISLANDS.

418. A broad flat ring cut in whalebone (5".4). ? Armlet. ? Solomon Islands. *The Curator*.

419, 420. Two wooden spears with elaborately carved barbed heads, of "cone in cone" pattern: in one, with slim cylindrical shaft, carved above the neck into a deeply cusped taper blade with a pair of longitudinal slits above a flat triangular expansion, the whole being decorated with scrollwork carving (l. 110".5); in the other—with shaft of oval section—the lower half of the head is armed with six pairs of lateral barbs, and the stout neck is carved with a pair of much conventionalised human figures (105".8). *Purchased*.

421. A flat bow of palm-wood (82" x 1"5) and a number of arrows, which include ten varieties, seven being finely carved barbed examples. Florida, Solomon Islands. *F. H. H. Guillemard, M.D.*

BANKS ISLANDS.

422. A hank of shell money (obsolete variety) consisting of roughly fashioned beads of white shell. **Professor Bevan and W. H. Rivers, M.A.*

FIJI ISLANDS.

423. Portion of a length of bark cloth (for chiefs use), with delicate pattern in brown. *F. H. H. Guillemard, M.D.*

POLYNESIA.

NEW ZEALAND.

424.425. Two shark's tooth ear ornaments (*mako*): one finely carved in bright green translucent jade (2"x2 x 1") with flaxen loop attached (South Island form); and one carved in white shell (1".3x0".8), the fang being covered with red sealing-wax;

426. A hook-shaped neck pendant (*hei matau*): an

unusually large old example, carved in mottled jade, with expanding ends and a serrated outer edge (4"-2 x 3".8);

427. A neck ornament [peku-peku = bat], cut in whale ivory, of cusped, half-moon form, symmetrically drilled with three larger oval, and three smaller round perforations (2".7 x 1".3);

428. A needle of light translucent jade with slightly curved point which, with the square-ended, drilled, head, is laterally flattened (5"x0"-2);

429. A small stout chisel of oblong section [*puru-puru*] in mottled jade, the butt carved with a pair of transverse grooves (3"x2x0"4). New Zealand;

430. A wooden food funnel, the outside elaborately carved in scroll-work showing a human mask on face and back (4".8x3".7). Used for feeding youths during the period of tattooing (Plato VII);

Four finely carved chiefs feather boxes (*Waka Hui*), viz.:

431. 432. Two oblong: (1) one straight-sided with plain ends, the open-work handles showing, respectively, a much conventionalised human figure and an ornate scroll (? *Manaia*). The oblong lid bears six transverse panels carved in half-relief (the central and outer pair showing contorted figures, the others an ornate pattern of rectilinear bands), the sides a human mask flanked by scrolls, etc. (the outer pair being set with a shell eye), and the bottom seven carved bands, three of interlaced and four of rectilinear pattern (l. 16".5 x b. 3"-7 x d. 2"2), Plate VIII; *and* (2) one with convex bottom, rounded ends and flat lid: the box and lid similarly carved with three pairs of large spirals, formed of beaded scrolls, on a groundwork of closely set pod-shaped ovals. The ends bear roughly carved handles in the form of squat human figures (18"-3 x 5"0 x 3"-6); *and*

433, 434. Two, pointed, oval: (3) one with unfinished caning, the design being completed only on one-half of the box and the lid. The flat lid shows in bold relief a pair of large headed human figures, with looped arms, lying feet to feet—the legs forming a central oval—on a ground, formed of bands of ornate crescents, which are continued round the box; the handles consist of human heads, attached to straight double necks (20" l x 5".4 x 4" 2); *and* (4) one, more slim with obtuse ends, shows two large figures covering the whole of the flat bottom of the box, with legs interlaced, and arms set akimbo, the looped handles being formed by the projecting necks of the large upturned triangular heads. The convex lid—as well as the groundwork of the box—is carved in close-set bands of rectilinear pattern (16".8 x 3"4 x 3"), Plate IX; *and*

435. The ornate figure-head of a small canoe: the head, with broad, protruding, tongue, is set on a stout square neck from which the straight arms—carved with interlaced pattern—extend backwards so as to form an open oval which is laterally divided by a tall cresting of open scroll-work which springs from the back of the head (18".8 x 8"-6 x 9".8). **Professor Bevan*. [Nos. 424—435.]

436, 437. Two roughly chipped implements of opaque obsidian: one, scraper-like, with a small tang-like projection, and one lozenge-shaped (imperfect). Easter Island, 1876;

438. A finely-ground elongate adze-blade of diorite. The straight sides expand towards the cutting-edge (with flat upper and convex lower face), and the rounded tang-like butt is cut back to form slight shoulders (11"x2"9). Eastern Pacific; *and*

439. A large leaf-shaped lance of hard wood (croton- leaf design): the conical butt of the cylindrical shaft terminates in a small knob, and the decoration consists of a mesh-pattern in dotted lines (94" x 4".3). Niue (Savage Island). **The Curator*. [Nos. 436—439.]

III. BOOKS.

1. ARCHAEOLOGY.

440. Observations on Popular Antiquities. By JOHN BRAND, M.A. Revised by Sir Henry Ellis, K.H. London, 1841—1842. 3 vols. in 1. 8vo. *Mr S. T. Cowles.*
441. Roman Britain (Early Britain Series). By EDWARD CONYBEARE. London, 1303. 8vo. *The Author.*
442. The Ancient Sepulchral Monuments of Essex. By FREDERIC CHANCELLOR. London, 1890. Folio. *Fawcett Bequest.*
443. The Diving Operations on Pudding Pan Rock, Herne Bay, Kent, and on the Gallo-Roman red ware recently recovered from the Rook. By REGINALD SMITH, B.A., F.S.A. (S. P.: Proc. Society of Antiquaries, 1907.) *The Author.*
444. The Older Series of Irish Flint Implements. By NINA F. LAYARD. (S. P.: 'Man,' 1909.) *The Author.*
445. The Distribution of Gold Lunulae in Ireland and North-Western Europe. By GEORGE COFFEY. (S. P.: Proc. Royal Irish Academy, Vol. xxvii.) *The Author.*
446. Prehistoric Leather Shield found at Clonbrin, County Longford. By E. C. R. ARMSTRONG. (S. P.: Proc. Royal Irish Academy, Vol. xxvn.) *The Author.*
447. 'York Corporation Plate. (S. P.: Yorkshire Herald, 1909.) 8vo, *J. E. Foster, M.A.*
Four Papers by Dr Haakon Schetelig, viz.:
448. (1) A coin of Offa found in a Viking-age burial at Voss, Norway. (S. P.: British Numismatological Journal, 1909);
449. (2) Pierres a feu Neolithiques de la Norvege. (S. P.: Bergens Museum Aarbog, 1908);
450. (3) Notitser von Bygdeborger. (S. P.: Aarsberet-ning for 1908 for Foreningen til Norske Fortidsminde-merkere Bevaring); *and*
451. Vestlandets Aeldste Kulturhistorie ev fozer til Bergens Museums Adsamling. Bergen, 1909. 8vo. *The Author.* [Nos. 448—451.]
452. Remarks on the Antiquities of Rome and its Environs. By ANDREW LUMISDEN. 2nd edition. London, 1812. 8vo. *Fawcett Bequest.*
453. The Tombs of the Giants and the Nuraghi of Sardinia in their West-European Relations. By DUNCAN MACKENZIE. (S. P.: Memnon, 1908.) *The Author.*
454. Prahistorische Bronzen aus Kleinasien. Von FELIX VON LUSCHAN. (S. P.: Globus, Bd. LXXXI., 1902); *and*
455. Uber die alten Handelsbeziehungen von Benin. Von Prof. Dr F. VON LUSCHAN. (S. P.: Verhandlungen d. Internationalen Geographen-Kongresses, Berlin, 1909.) *The Author.* [Nos. 454, 455.]

2. TOPOGRAPHY AND ARCHITECTURE.

456. Observations on a Tour through almost the whole of England. By [C.] DIBDIN. London [1801—1802], 2 vols. 4to. *J. E. Foster, M.A.*
457. Cambridgeshire. By T. MCKENNY Hughes, M.A., F.R.S., and May Caroline Hughes. Cambridge, 1909. 8vo. *The Curator.*
458. An Analysis of Gothick Architecture. By RAPHAEL and J. ARTHUR BRANDON. London, 1849. 4to.; *and*
459. Specimens of the Ecclesiastical Architecture of Great Britain, from the Conquest to the Reformation. By HENRY BOWMAN. London, 1846. 4to. *Fawcett Bequest.* [Nos. 458, 459.]

460. An Apology for the Revival of Christian Architecture in England. By A. WELBY PUGIN. Loudon, 1843. 4to. *G. Montagu Benton, B.A.*
461. Photographs from Sketches by Augustus Welby N. Pugin. By STEPHEN AYLING. London, 1865. 4 vols. 4to.;
462. Gothic Ornaments selected from various Ancient Buildings, both in England and France, during the years 1828, 1829 and 1830. A Series of Ornamental Timber Gables, from existing examples in England and France. By AUGUSTUS PUGIN. London, 1854. 4to.; *and*
463. The Open Timber Roofs of the Middle Ages. By RAPHAEL and J. ARTHUR BRANDON. London, 1849. 4to. *Fawcett Bequest.* [Nos. 461—463.]
464. The Castles and Abbeys of England. By WILLIAM BEATTIE, M.D. London, 1842. 8vo. *G. Montagu Benton, B.A.*
465. Historical and Architectural Notes on the Parish Churches in and around Peterborough. By the Rev. W. D. SWEETING, M.A. London, 1868. 8vo.;
466. On the Architectural History of Ely Cathedral. By the Rev. D. J. STEWART, M.A. London, 1868. 8vo.;
467. The Architectural History of Canterbury Cathedral. By the Rev. R. WILLIS, M.A. London, 1845. 8vo.;
468. The Abbey Church of St Alban, Hertfordshire. Illustrated by JAMES NEALE, F.S.A. Privately printed for Subscribers. London [1877]. Folio;
469. The Antiquities of the Priory of Christ-Church, Hants. By B. FERREY and E. W. BRAYLEY. London, 1834. 4to.; *and*
470. A Short Historical Account of the Collegiate Church of St Peter, Wolverhampton. By FREDERICK HALL, B.A. Wolverhampton, 1865. 8vo. *Fawcett Bequest.* [Nos. 465—470.]
471. An Illustrated Guide to the Remains of the Ancient Priory and the Present Parish Church at Clerkenwell. By Thos. W. WOOD and HENRY W. FINCHAM. London, 1903. 8vo. *J. E. Foster, M.A.*
472. Linton Church. A Paper read before the Church of England Men's Society. By WILLIAM MORTLOCK PALMER, M.D. Linton, 1909. 8vo. *Mrs Ficklin.*
473. Screens and Galleries in English Churches. By FRANCIS BOND. Oxford, 1908. 8vo. *T. D. Atkinson, Esq.*
474. Legends of St Augustine, St Anthony and St Cuthbert, painted on the back of the stalls in Carlisle Cathedral. [By C. G. V. HARCOURT.] Carlisle, 1868. 8vo.;
475. The Heraldry in the Churches of the West Riding of Yorkshire. By the Rev. J. HARVEY BLOOM, M.A. Hems-worth, 1892—95. 6 parts. 8vo.;
476. The Church Bells of Leicestershire; their Inscriptions, Traditions and Peculiar Uses. By THOMAS NORTH. Leicester, 1876. 4to.; *and*
477. Materials for a History of Cockfield, Suffolk. By CHURCHILL BABINGTON, D.D. (S. P.: Proc. Suffolk Inst. of Arch.) 1880. 8vo. *Fawcett Bequest.* [Nos. 474—477.]
478. History of Tattershall, Lincolnshire. By M. A. PICKWORTH. 2nd edition, Lincoln, 1901. 8vo.;
479. A Short Sketch of the Beauchamp Tower, Tower of London. By W. R. DICK. London [n. d.]. 8vo.; *and*
480. Taunton Castle: Notes on its Construction and History. By the Rev. D. P. ALFORD, M.A. (S. P.: Somerset

Archaeological and Natural History Soc.) 1906. 8vo.

J. F. Foster, M.A. [Nos. 479, 480.]

481. Indication of Houses of Historical Interest in London, Parts 28—28. London. 8vo. *The London County Council.*

482. Ye Antient Commandery, Worcester. (S. P.: Official Guide to Worcester.) Worcester [n. d.]. 8vo. *The Rev. W. G. Searle, S.I.A.*

3. HISTORY AND GENEALOGY.

483. A History of Cambridgeshire. (Popular County Histories.) By the Rev. EDWARD CONYBEARE. London, 1897. 8vo.; and

484. Alfred in the Chroniclers. By EDWARD CONYBEARE, M.A. London, 1900. 8vo. *The Author.* [Nos. 483, 484.]

485. Some Pages from the "Book of the Laity" of Mediaeval Cambridgeshire. By G. MONTAGU BENTON. (S. P.: Fitzwilliam Hall Magazine, Vol. 1., 1909.) *The Author.*

486. Sir Benjamin Stone's Pictures. Records of National Life and History. London [n.d.]. 4to. 2 vols.; and

487. Excerpta e Compto Thesauriae Monasterii Sancti Augustini extra muros Cantuariae A.D. 1432. Accedunt Compoti Quidam Willielmi Chert Custodis Collegii Cantuarie Oxoniae A.D. 1395-6-7. London, 1881. 8vo. *F. J. Sebley, Esq.* [Nos. 486, 487.]

488. The Churchwardens' Accounts of the Parish of Camborne. By THURSTON PETER. (S. P.: Journal of the Royal Institute of Cornwall, No. LV.) *The Curator.*

489. A Chronicle of the Church of St Martin in Leicester during the reigns of Henry VIII, Edward VI, Mary and Elizabeth. By THOMAS NORTH. London, 1866. 4to. *Fawcett Bequest.*

490. Some Feudal Coats of Arms from Heraldic Rolls 1298—1418. By JOSEPH FOSTER, Hon. M.A. Oxon. London, 1902. 8vo. *Purchased.*

491. The True History of the Conquest of New Spain. By BERNAL DIAZ DEL CASTILLO. Translated into English with Introduction and Notes by ALFRED PERCIVAL MAUDSLAY, M.A. [Hakluyt Society,] 1908. 2 vols. 8vo. *The Translator.*

4. BIOGRAPHY.

492. The Life of Philibert Commerson. By Captain S. PASFIELD OLIVER, R.A., and edited by G. F. SCOTT ELLIOT. London, 1909. 8vo. *R. E. Froude, Esq., F.R.S.*

5. GUIDE BOOKS.

493. A Guide to Avebury and Neighbourhood. By R. HIPPISEY COX. London, 1909. 8vo. *The Publisher (Mr E. Stanford.)*

494. The Buxton of Yorkshire; being a complete guide to Grassington. By the Rev. BAILEY J. HARKER. Manchester, 2nd edition. 8vo. *The Author.*

6. ETHNOLOGY, Ac.

495. (1) Einige türkische Volkslieder aus Nordsyrien und die Bedeutung phonographischer Aufnahmen für die Volkerkunde. Von F. von Luschan. (2) Phonographierte türkische Melodien; (3) Über die Bedeutung der Phonographen für vergleichende Musikwissenschaft. Von O. ABRAHAM und E. von Hornbostel. (S. P.: Zeitschrift für Ethnologie, 1904.) *Professor Dr F. von Luschan.*

496. Castes and Tribes of Southern India. By EDGAR THURSTON, C.I.E., assisted by K. RANGACHARI, M.A. Madras, 7 vols. 8vo. *The Government Press, Madras.*

497. Beiträge zur Volkerkunde der deutschen Schutzgebiete. Von FELIX VON LUSCHAN. Berlin, 1897. Folio. *Professor Sir George Darwin, K.C.B.*

498. The Origin of West African Cross-bows. By HENRY BALFOUR. (S. P.: Journal of the African Society, 1909.) *The Author.*

Four Papers by Professor Dr F. VON LUSCHAN, viz.:

499. (1) Eine neu erworbene Sammlung von den Bakundu in Kamerun.—Eine Benin-Platte.—Bogen und Pfeile der Watwa vom Kiwu-See. (S. P.: Berliner Gesellschaft für Anthropologie etc., 1900); (2) Schnitzwerke aus dem westlichen Sudan. (S. P.: Zeitschrift für Ethnologie, 1903); (3) Über sechs Pygmäen vom Ituri. (S. P.: Zeitschrift für Ethnologie, 1906); and (4) Über Buschmann-Malereien in den Drakensberg. (S. P.: Zeitschrift für Ethnologie, 1908.) *The Author.*

500. Indianer-typen aus dem Amazonasgebiet, nach eigener Aufnahmen während seiner Reise in Brasilien. Von Dr THEODOR KOCH-GRUNDBERG. Berlin [1909]. Folio; and

501. Die Heilige Sage der Polynesier. Kosmogonie und Theogonie. Von ADOLF BASTIAN. Leipsic, 1881. 8vo. **The Curator.* [Nos. 500, 501.]

Three Papers by Professor Dr F. VON LUSCHAN, viz.:

502. (1) Neue Beiträge zur Ethnographie der Matty-Insel. (S. P.: Internationales Archiv für Ethnographie, Bd. XII., 1899); (2) R. Parkinson's Beobachtungen auf B6b6lo und Hun (Matty und Durour). (S. P.: Globus, Bd. LXXVIII., 1900); and (3) Eine neue Art von Masken aus Neu-Britannien. (S. P.: Globus, Bd. LXXX., 1901.) *The Author.*

503. Maori Forest Lore. By ELDON BEST. (S. P.: Trans. New Zealand Institute, 1908.) *Major-General G. Robley.*

7. TRAVELS.

504. Mexico as it Was and as it Is. By BRANTZ MAYER. New York, 1844. 8vo. *Purchased.*

505. Neue Reise nach New Guinea und den Caribaischen Inseln in Amerika in den Jahren 1783 bis 1787. Von PAUL ERDMANN ISSERT. Berlin, 1790. 8vo.; and

506. The Confessions of a Beachcomber. By E. J. BANFIELD. London, 1908. 8vo. *The Curator.* [Nos. 505, 506.]

507. Bericht über eine Reise in Sudafrrika. Von F. VON LUSCHAN. (S. P.: Zeitschrift für Ethnologie, 1906.) *The Author.*

8. GEOGRAPHY.

508. The Texts and Versions of John de Plano Carpini and William de Rubruquis, as printed for the first time by Hakluyt in 1598 together with some shorter pieces. [Hakluyt Society,] London, 1903. 8vo. *The Curator.*

509. Vorschläge zur Geographischen Nomenklatur der Siidsee. Von F. VON LUSCHAN. (S. P.: Verhandl. des 7ten internationalen Geographen-Kongresses in Berlin, 1899.) *The Author.*

9. CATALOGUES, &c.

510. Norwich. Catalogue of the Pictures, Drawings, Etchings and Bronzes in the Picture Gallery of the Castle Museum. 4th edition, 1909. 8vo. *The Director.*

511. Coin: Führer durch das Rautenstrauch-Joest. Museum für Volkerkunde. Von Dr W. FOY. Coln, 1908. 8vo. *The Author.*

512. Ottoman Empire: Musees Impdriaux Ottomans: Catalogue des Figurines Grecques de Terro Cuite. Constantinople, 1908. 8vo. *C.A.S.*

10. MUSEUM PUBLICATIONS.

513. Hull Museum Publications. Nos. 5, and 34, 35. By THOMAS SHEPPARD, F.G.S. Hull, 1906—9. 8vo. *The Author*.
New York American Museum of Natural History:
514. Anthropology, Vols. i.—vi. ;
515. Anthropological Papers, Vols. i.—iv., Part 7. 1908—9. 8vo.; *and*.
516. Ethnographical Album of the North Pacific Coasts of America and Asia (Jesup North Pacific Expedition). Part I. New York, 1900. Folio. *The Director of the Museum*. [Nos. 514—516.]
Pennsylvania: University Museum:
517. Areika. By D. RANDALL-MACIVER and C. LOUARD WOOLLEY. Oxford, 1909. 4to. *The Authors*.
Sydney: Australian Museum:
518. North Queensland Ethnography: Fighting Weapons. By WALTER E. ROTH (Australian Museum Record, Vol. vii. 1909). *The Author*.

11. REPORTS.

519. Bergen : Report of the District Secretary of the Viking Club. Dr HAAKON SCHETELIG. (S. P.: Year Book of the Viking Club, Vol. i. London, 1909.) *The Author*.
520. Brighton: Public Library, Museums, and Art Galleries. Annual Report for 1908. 8vo. *The Director*.
521. Calcutta: Annual Report of the Indian Museum Industrial Section for the Year 1908-9. *The Superintendent*.
522. Colchester: Corporation Museum of Local Antiquities. Annual Report for the year ended 31st March, 1909. 8vo. *The Director*.
523. Coin: Bericht über die Prahistoriker-Versammlung am 23 bis 31 Juli 1907 zur Eröffnung des Anthropologischen Museums. Coin, 1908. 4to. *Purchased*.
524. Gravenhage: Rijks Ethnographisch Museum Verslag (1907—1908), 1909. *The Director*.
525. Hannover : Provinzial Museums Jabrbuch, 1908— 1909. 4to. *The Director*.
526. Horniman Museum and Library. Seventh Annual Report, 1908. London. 8vo. *The London County Council*.
527. Munich: Berichte des K. Ethnographischen Museums in Munchen. i. (1909.) Von LUCIAN SCHERMAN. (S. P.: Das Münchner Jabrbuch der bildenden Kunst, 1909. i.) Munich, 1909. *The Director*.
528. Norwich: Castle Museum. The Report of the Committee to the Town Council, 1908. 8vo.; *and*
529. Norwich Museum Association. First Annual Report, 1907—1908. 8vo. *The Director*.
530. Papua: Annual Report, 1907—1908. Folio. *The Colonial Secretary*.
531. Peterborough : Precis of the 36th Annual Report of the Natural History, Scientific and Archaeological Society, 1907. 8vo. *The Secretary*.
532. The Archaeological Survey of Nubia. Bulletins, Nos. 3 and 4. Cairo, 1909. 8vo. *The Director-General of the Survey Department, Egypt*.

IV. PHOTOGRAPHS AND PRINTS.

554. A photograph of the late Commendatore Enrico Hilier Giglioli, Director of the Royal Zoological Museum, Florence. Presented by his widow, *Madame Giglioli*.
555. Svenska Nationaldrakter [A series of coloured

533. Report of the Red Hills Exploration Committee, 1906—1907. By FRANCIS W. READER. 8vo. *The Secretary*.
534. Sydney: New South Wales. Technological Museums, Annual Reports, 1907 and 1908. Folio. *The Director*.
535. Warrington: County Borough of Warrington Museum: Report of the Director and Librarian for the Year ending 30th June, 1909? *The Secretary*.
536. Washington : Report on the Progress and Condition of the U.S. National Museum for the Year ending June 30, 1908, and for the year ending June 30, 1909. 8vo. *The Director*.

12. WORKS OF REFERENCE.

537. Whitaker's Peerage, Baronetage, Knightage and Companionship for the Year 1909. London. 8vo.; *and*
538. A List of the Monumental Brasses remaining in England. [By C. R. MANNING.] London, 1846. 8vo. *Fawcett Bequest*. [Nos. 537, 538.]

13. SERIAL PUBLICATIONS.

539. The Museums Journal. London, 1909. 8vo. *Purchased*. ANTIQUARIAN, &C.
540. The Antiquary. London, 1909. 4to.; *and*
541. The Reliquary and Illustrated Archaeologist. London, 1909. 8vo. C. A. S. [Nos. 540, 541.]
542. The Indian Antiquary, a Journal of Oriental Research. Edited by Sir RICHARD CARNAC TEMPLE, Bart., C.I.E.. Bombay, 1909. 4to. *The Editor*.
543. The East Anglian, or Notes and Queries. London, 1909. 8vo.;
544. Fenland Notes and Queries. London, 1909. 8vo.;
545. The Publications of the Cambridge Antiquarian Society for the year 1909 ;
546. The Publications of 90 Societies (46 British, and 44 Foreign) received in exchange by the Cambridge Antiquarian Society, during the year 1909, as recorded in the Society's Annual Report;
547. The Architectural and Topographical Record. Vol. i., Nos. 1 and 3. London, 1909. 8vo.; *and*
548. The Ely Diocesan Remembrancer. Cambridge, 1909. 8vo. C. A. S. [Nos. 543—548.]
549. Archaeologia. Vols. 53—60. London, 1893— 1907. 8 vols. 4to.;
550. Vetusta monumenta. Printed by order of the President and Council of the Society of Antiquaries of London. Indexes to Vols. iv.—vi., and Parts 1—4 of Vol. vii. London, 1885—1906. 4to.;
551. Notes and Queries. 4th and 5th Series (12 vols. with Indexes); 6th Series (12 vols.); and 7th Series (vols. I.—ix.). London, 1868—1890. 33 vols. 4to.;
552. The Ecclesiologist. Vols. i.—iii., and xxi.— xxix. Cambridge, 1842—1844, 12 vols. 8vo.; *and*
553. Annales Archdologiques. Par DIDRON Aine. Vols. vi.—viii. Paris, 1847—1848. 3 vols. 4to. *Fawcett Bequest*. [Nos. 549—553.]

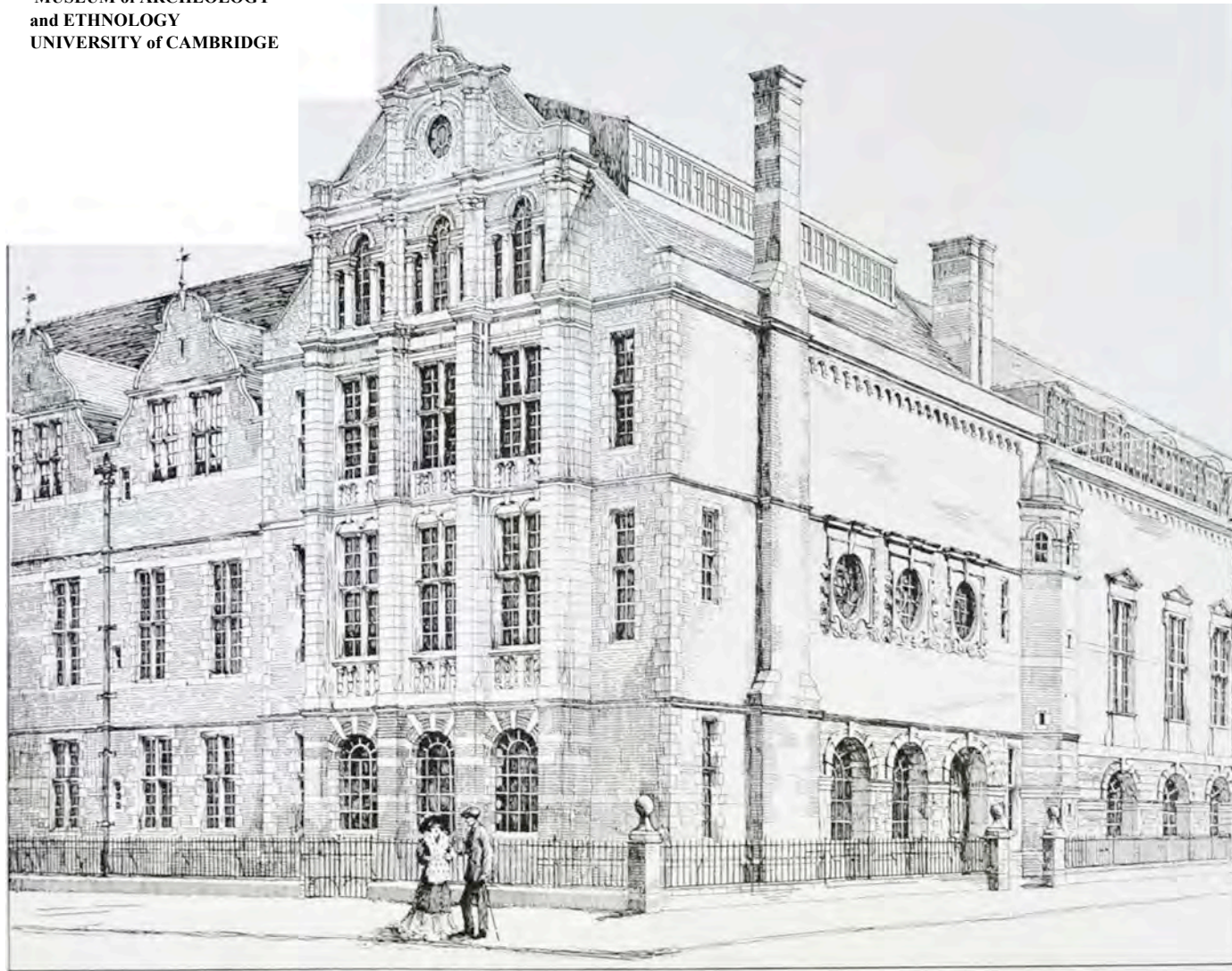
illustrations by ALGOT E. STRAND]. Chicago [1894]. 8vo.

H. E. Foster, M.A.

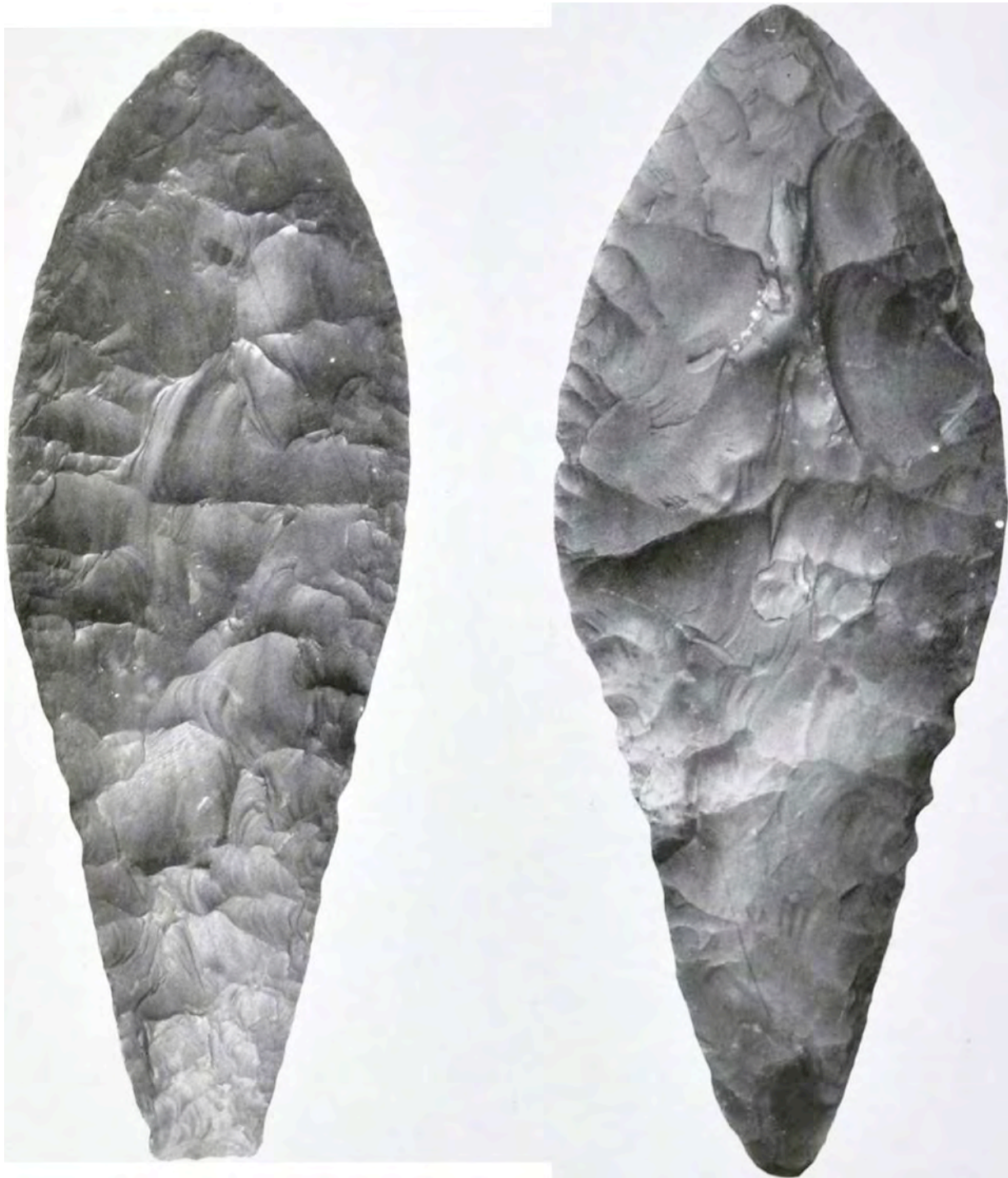
556. Album von Papua-Typen: Neu Guinea und Bismarck Archipel. 54 Tafeln. Hrsg. von A. A. MEYER und R. PARKINSON. Dresden, 1894. Folio. **The Curator*.

- One hundred and thirty photographs, viz.:
- 557.** Two (7"-5 x 5"-5 and 5"-5 x 3"-5) of native women, Cairo, 1904. Taken by the donor. *Mr E. Hilton.*
- 558.** Seventy (3" x 3"—6"-5 x 4"-6) of natives of the Ainu, Gilyak, Orocho, Yakut, and Olchi tribes of the island of Sakhalin, Japan. *C. S. Myers, M.D.*
- 559.** Forty-seven (6" x 4" and smaller) of Javanese, Sundanese, and Dyaks, and of their houses, etc. Taken by the donor. *T. R. H. Garrett, B.A.*
- 560.** Ten (4" 6 x 3"6), with negatives, of aborigines (*Kaitish* tribe) of Barrow Creek, N. T., Australia. Taken on a motor journey across the continent (1908), by the donor. *H. H. Dutton, Esq. (B.A. Oxon.).*
- 561.** One (4"-6x3"-6) of a gold torque, found at Yeovil 1909. *R. H. Walter, M.D.*
- 562.** Five photo-postcards of stone circles, stone huts, etc., Deepdale and Grassington, Yorks. Taken by the donor. *J. Crowther, Esq.*
- 563.** An engraving (4"5 x 6") of the Abbey Gate, Thetford. *The Rev. H. Tyrell Green, B.A.*

**MUSEUM of ARCHEOLOGY
and ETHNOLOGY
UNIVERSITY of CAMBRIDGE**



First block of the new Museum now in course of erection.



Flint Daggers.

Photo. E. Hilton.

(Scale {•})

OO

1. Jackdaw Hill near Leighton Buzzard, Bucks., 1837.

2. Prickwillow near Ely, 1907.

Presented, 1883 and 1909, by the Cambridge Antiquarian Society.

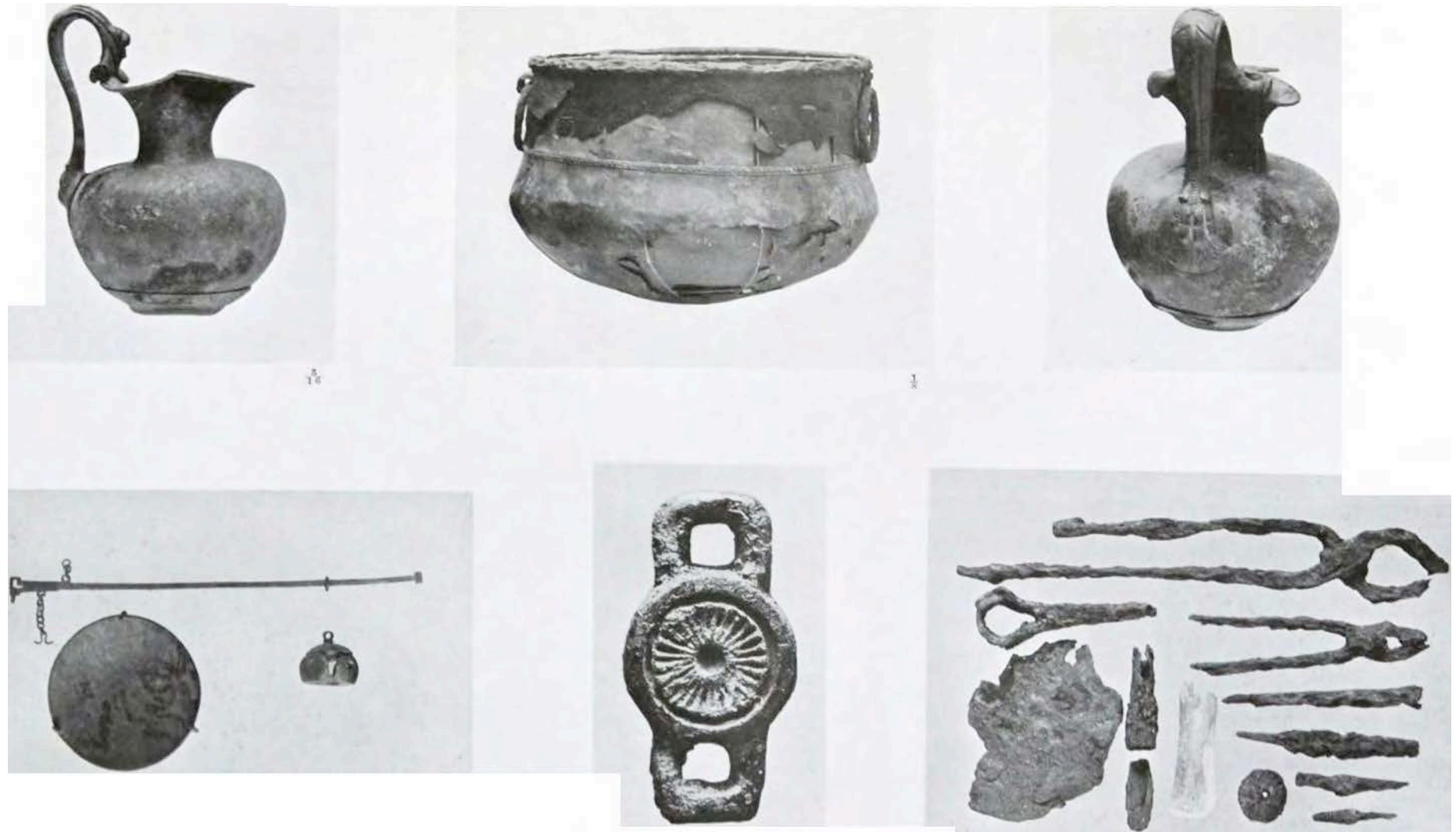
(Cat. Ant. Mus. No. 91 and A.K. 1909, No. 77.)

Cambridge Univ. Mus. of Archaeology and Ethnology.

Annual Report 1909

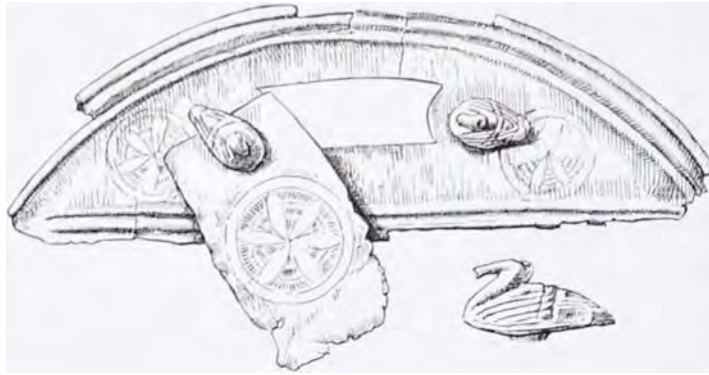


First Century Hoard of Late Keltic and Roman metal work (Plates IV—VI)



Found at San ton Downlmin, Suffolk, 1897.
Presented by the Cambridge Antiquarian Society.

(A. K. 1897, No. 87.)
Reproduced from *Proe. Camb. Ant. Soc.* 1909. Vol. xm. (see R. A. Smith, p. 148).

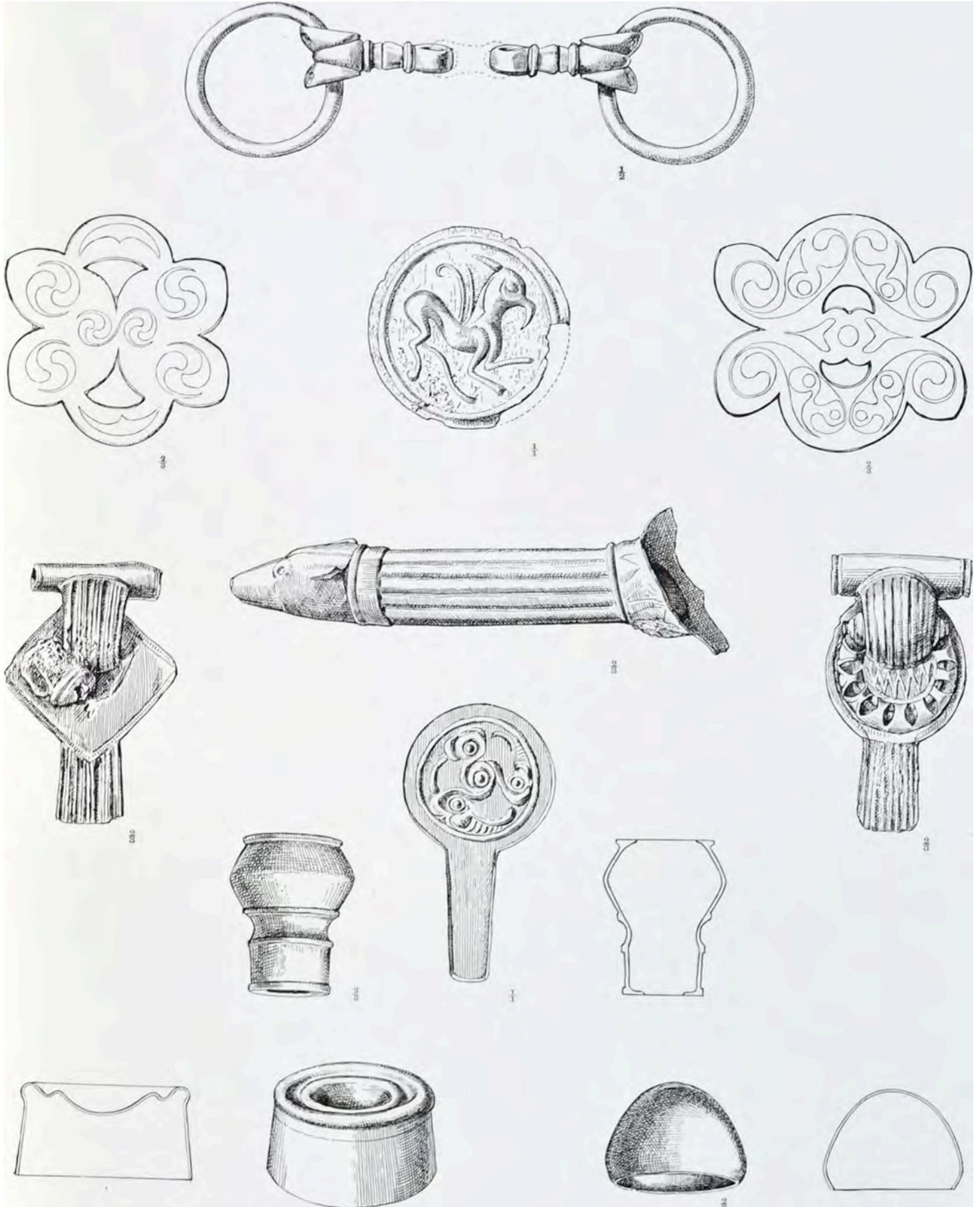


i



i

Santon Downham Hoard (see PLATES IV and VI).



E. Wilson del.



Photo. W. Tams.

(Scale {.)

Maori ceremonial food funnel.

Presented by A. A. Bevan, M.A., Lord Almoner's Render in Arabic. (A.R. 1909,
No. 430.)



Photo. K. Hilton.

Maori feather box (*Waka lima*).

Presented by A. A. Bevan, M.A., Lord Almoner's Reader in Arabic.

(A.R. 1909. No. 431.)

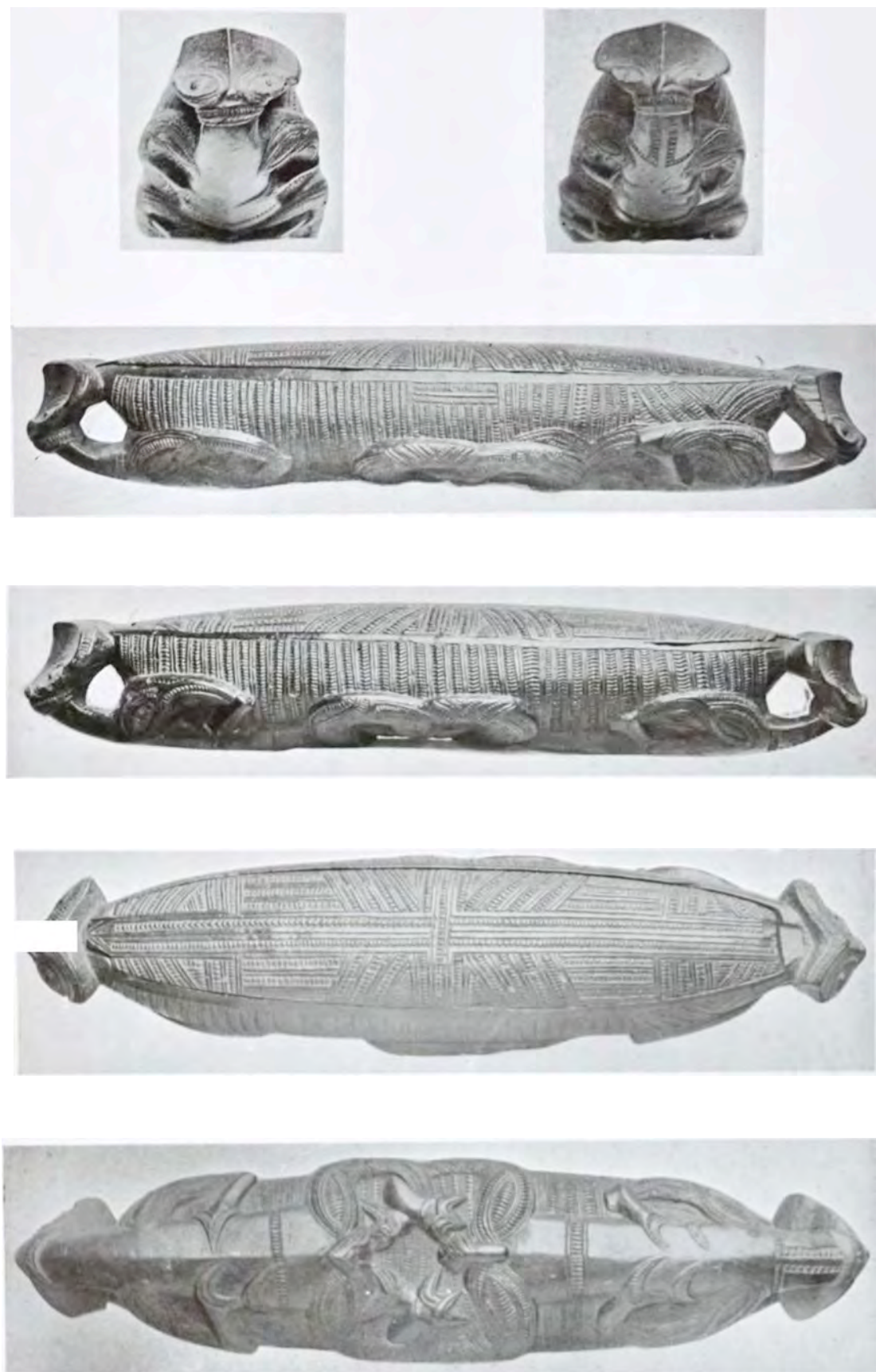


Photo. K. Hilton.

(Scale K>)

Maori feather box (*Wuktt haiu*).

Presented by A. A. Beviui, M.A., laird Almoner's Header in Arabic.

Preserved human head. Ahuarina Tribe, Rio Apago, Brazil.



Photo. E. Hilton.

(Scale J.)

**In process of drying, shewing wooden skewers in lips and supporting band inside neck.
Presented, 1891, by R. E. Fronde, Esq., F.R.S.**

(A.R. 1891. No. 63.)

MUSEUM OF ARCHAEOLOGY AND OF ETHNOLOGY, CAMBRIDGE

PUBLICATIONS

ANNUAL REPORTS OF THE ANTIQUARIAN COMMITTEE TO THE SENATE,
with **Lints of Accessions and Deposits.** **4to.**

Separate Prints from the University Reporter, 1885—1909:

I and II (out of print) ; III to VI 3d. each ; VII—VIII, with supplement, 6d.; IX to XIII 3d. each; XIV to XVII, with supplements, 6d. each; XVIII to XXII 3d. each (The set III—XXII 5s.); XXIII (see below) Is.; XXIV 6d.; XXV 6d.

Illustrated Museum Issue:

XXIII (with six plates) Is.; XXIV (with nine plates) Is. 6d.; XXV (with ten plates) Is. 6d.

CATALOGUES (separate prints from the above):

The Walter K. Foster Bequest: Antiquities. **4to. 1891. Is.**

The Skeat Ethnological Collection from the Malay Peninsula. **4to. 1899. 6d.** The Murray Collection of Irish Antiquities. **4to. 1901. 3d.**

The Starr Collection of Mexican Folk-Lore (*Precis*). **4to. 1901. 3d.**

The Temple Collection of the Manufactures of the Andaman Islanders. **4to. 1902. 6d.** The Man Collection of the Manufactures of the Nicobar Islanders. **4to. 1902. 6d.**

Catalogue of the Archaeological Collections. Roman Pottery : I. **Local Collection (Preliminary issue). 1892. 4to, with nine plates. (Out of print.)**

In preparation.

BY THE CURATOR.

A Catalogue of the local collection of Roman Pottery **Revised and enlarged edition. 4to with 15 Plates.**

Na Kai Viti or The Islanders of Fiji. **4to, Illustrated.**

**** To be issued in parts as soon as a sufficient number of subscribers has been secured to defray the costs of publication.*