

University of Cambridge

MUSEUM OF GENERAL AND LOCAL ARCHAEOLOGY
AND OF ETHNOLOGY

TWENTY-THIRD ANNUAL REPORT

OF THE

ANTIQUARIAN COMMITTEE

TO THE

SENATE

May 29, 1908

Museum Issue
With Six Plates

Reprinted from the Cambridge University Reporter

1908

University of Cambridge

MUSEUM OF GENERAL AND LOCAL ARCHAEOLOGY
AND OF ETHNOLOGY

TWENTY-THIRD ANNUAL REPORT

OF THE

ANTIQUARIAN COMMITTEE

TO THE

SENATE

May 29, 1908

Museum Issue
With Six Plates

Reprinted from the Cambridge University Reporter
1908

LIST OF PLATES

		PAGE
I.	Gold Armilla and bronze Palstaves. Grunty Fen, Haddenham, Cambridgeshire, 1844. Reproduced from <i>Communications, Cambridge Antiquarian Society</i> , Vol. XII.	9
II.	British handled vessel of earthenware. Fordham, Cambridgeshire, 1900	10
III.	Kibuka: War God of the Baganda. Mawokota, Uganda, 1904 Reproduced from <i>Man</i> , 1907.	16
IV.	Objects made by the Baliima, a Cow Tribe of Enkole, Uganda Reproduced from <i>Journal, Royal Anthropological Institute</i> , Vol. XXXVII.	17
V.	Two decorated Maces (chief's insignia), Solomon Islands Reproduced from <i>Man</i> , 1908.	20
VI.	Two Shields (of Florida make with Rubiana shell-decoration) Reproduced from <i>Man</i> , 1906.	21

CONTENTS

	PAGE
REPORT	5
List of Donations to the Museum Accessions Fund	8
Donations to the New Museum Building Fund	8
APPENDIX.	
1. List of Accessions from January 1 to December 31, 1907	
I. Archaeology	
British : Prehistoric	9
Roman	11
Saxon	11
Mediaeval and Later	12
Foreign : Europe	13
Asia	14
Africa	14
America	14
II. Folk-Lore	14
III. Ethnology:	
Europe	14
Asia	15
Africa	16
America	18
Australia	19
Oceania	20
IV. Books:	
Archaeology	22
Topography and Architecture	23
History and Genealogy	23
Biography	24
Guide Books	24
Ethnology, &c.	24
Travels and Geography	25
Works of Reference	25
Catalogues, &c.	25
Museum Publications	25
Reports	26
Serial Publications	26
V. Photographs, Prints, and Drawings	26
VI. Maps	27
2. List of Objects received on Deposit from January 1 to December 31, 1907	27

NOTE

An important innovation has been made in this year's report by the introduction of illustrations. For four of these plates the Museum is indebted to the Council of the Royal Anthropological Institute, for two to the Council of the Cambridge Antiquarian Society who have kindly placed their blocks at the disposal of the Committee, and the cost of one plate has been defrayed by the Curator. It is hoped that this may prove but a first instalment and that figures of many of the more noteworthy objects preserved in the Museum may thus eventually be published.

A revised copy of the circular issued on behalf of the New Museum Building Fund by the University Association, will be found appended to the Report.

August 1908.

Report of the Antiquarian Committee for the Year 1907

MUSEUM OF ARCHAEOLOGY AND OF ETHNOLOGY,
May 29, 1908

THE ANTIQUARIAN COMMITTEE beg leave to present their Twenty-third Annual Report to the Senate.

NEW MUSEUM. It is most gratifying to the Committee, in issuing the present Report, to be able to record important donations to the Building Fund. The sum of four thousand pounds has been given "in memory of Walter K. Foster" by four members of his family*. The gift was announced by the Vice-Chancellor in the *Reporter* of February 18. By this addition to the fund the time at which building operations may actually be commenced should be brought appreciably nearer. Detailed plans and estimates are being considered by the Building Syndicate. It would be a fitting commemoration of the twenty-fifth anniversary of the opening of the present Museum to lay the foundation stone of the new building in 1909.

FITTINGS. *Ethnological Galleries*. The large ethnological case in the centre of the West Gallery, which for want of means had to be erected piece-meal during the last two years, has been completed. Its fittings still remain to be added before it can be brought into use.

Two sections of the old wall-cases in the Long Gallery have been refitted to provide accommodation for the steadily growing collection of preserved human heads and decorated skulls from various countries.

WORK DONE. The work of mounting and providing with permanent labels the smaller local and foreign antiquities has been continued, and most of the objects forming part of the original collection of the Cambridge Antiquarian Society have now been dealt with, as well as the greater portion of the more recent accessions.

Some fine examples of decorated Saxon urns and several Roman vessels have been restored in the Museum, and a large number of other objects have been cleaned and repaired.

ACCESSIONS. The thanks of the Committee are again due to those who have subscribed to the Accessions Fund, and a special mention must be made of the continued liberality of Professor Bevan and of the Cambridge Antiquarian Society. These contributions enabled the Curator to secure many valuable acquisitions; but the number of subscribers remains very small, and it is much to be wished that more members of the University would come forward with even small subscriptions to the Fund. Further support is necessary if the many gaps in the collections are ever to be filled. Objects are not only becoming scarcer through the rapid destruction of native arts in all parts of the world, but as the number of public and private collectors increases, the competition becomes keener every day, and the market value is being continually raised.

A most noteworthy addition has been made to the Collection of early British pottery by the Curator, Baron A. von Hugel. It consists of a highly decorated and admirably preserved example of the rare mug-shaped type of vessel (from Fordham, Cambridgeshire), of which not half-a-dozen examples have so far been recorded.

I. *Archaeological*: 1. Local. The series of stone implements has been considerably extended during the past year, thanks chiefly to the Cambridge Antiquarian Society's grant. Among the most interesting additions may be mentioned: a fine dagger-blade with nicked sides, the largest example of this British form which has come to light in this neighbourhood in recent years; a fair number of celts, borers, fabricators, etc.; and a carefully selected series of arrow-heads, including examples of practically all the known English forms.

* In 1891, Mr Walter K. Foster bequeathed to the University his valuable collection of British and Foreign Antiquities together with his Archaeological Library. (*Reporter*, 1891—92, p. 93.)

To the Rev. W. G. Searle, M.A., the Museum is indebted for a fine example in jadeite of the highly polished variety of celt, which was found some six years ago at Histon, near Cambridge. It is the first example recorded from the Eastern Counties.

Of the Bronze Period: an unusually small dagger-blade, with perforated, expanding base; three celts, one decorated; and a diminutive chisel, likewise procured by means of the Society's grant.

Little pottery has come in during the past year, and only a few isolated pieces have been obtained, the most noteworthy of which are a large Roman urn from Denton, Lincolnshire, and a large mediaeval jug in perfect condition from Chesterton.

A number of decorated Saxon cinerary urns, found in local burial grounds including an exceptionally fine example, with raised ribs, have been skilfully restored and placed with the collections.

J. E. L. Whitehead, M.A., Town Clerk, has kindly added a Georgian wooden pottle, inscribed "Cambridge," to the series of local weights and measures.

2. General. An oak stake, found *in situ* in the bed of the river Thames at Brentford, and supposed to have formed part of the ancient British palisades defending the great ford there, has been presented by Montagu Sharp, Esq. (see *Archaeological Journal*, 1906, p. 25).

An interesting collection of antiquities found in a Roman villa at Combe Down, Bath, between 1860 and 1870, including some well-preserved iron-implements, tiles, and a quantity of pottery (mostly fragmentary), illustrative of a considerable variety of ware, has been presented by G. E. Cruickshank, M.A., St John's College.

Several valuable antiquities from the Puy-de-Dome district have been added to the Continental Series by means of Mrs Walter K. Foster's subscription. They include: a large, bason-shaped bowl of moulded fine red "Samian" with potter's stamp *COCI OFIC* within a double lined ring, from the Roman kilns of Lezoux; a small, two-handled, urn-shaped vessel decorated with raised medallions, from Chamalieres; an ornate example of a bronze implement, of the kind usually known as "pastry-cutters," but possibly used for the decoration of leather; and three bronze "cloak-fasteners" from Gergovia (site of the famous Gaulish town), near Clermont-Ferrand; and a large Merovingian buckle of bronze (tinned), with interlaced pattern, from Soissons.

J. E. Foster, M.A., has presented a valuable set, likewise from the Puy-de-Dome district, of decorated bosses, in bronze and brass, comprising Roman, mediaeval, and later examples, and a number of 17th century ornate iron keys from the Conpagnon Collection.

A second series of iron keys, mainly of the 17th century, and an interesting set of objects—survivals of a fast disappearing age—collected in farm houses in the same district, have been given by the Baroness Anatole von Hugel.

Some interesting additions have been made to the small collection of American Antiquities. A. P. Maudslay, M.A., has given fourteen stone celts, a number of polished stone beads, etc.; Major-General Lord Ralph Kerr, C.B., a set of ornate earthenware vessels from Colombia; and the Curator a socketed head of a staff with semi-detached figures moulded in copper from Peru.

II. *Ethnological: Asia.* A collection of miscellaneous objects, mainly from India, for domestic and ceremonial use, formed by the donor and her husband, the late Professor Bendall, has been presented by Mrs Bendall.

Korea is at length represented in the Museum by a fine stone bowl and other objects, presented by Professor Bevan.

Africa. An exceptionally valuable collection has been received from the Rev. J. Roscoe, C.M.S., of Uganda. It includes the relics of the War-God of the Baganda, *Kibuka*, from his ruined shrine in the Mawokota district; four *lubare*, containing the relics of deceased kings; and a selection of dairy utensils, personal ornaments, charms, weapons, etc., of the Bahima (a Cow tribe of Enkole), and of neighbouring tribes. The special thanks of the University

have been given to Mr Roscoe for this most valuable gift (Grace 3, Feb. 13, 1908, *Reporter*, p. 602).

A set of Abyssinian weapons, horse-trappings, etc., has been presented by H. Weld-Blundell, Esq.

America. Two fine "totem-posts," carved respectively with the frog and whale, and the frog, beaver, raven and owl symbols, by the Nootka Indians of Vancouver Island, have been presented by J. W. L. Glaisher, Sc.D., F.R.S.

Miss M. A. Owen has added to her collection of personal and ceremonial dresses and ornaments of the Musquakie Indians a hand-loom shewing a patterned square of coloured wools in process of making.

Australia. A fourth valuable consignment of native manufactures, including a set of personal ornaments, from Melville Island, and North Central Australia, has been received from R. H. Marten, M.D., of Adelaide.

J. B. Andrews, Esq., has given a number of decorated weapons, etc., from various parts of Australia.

Oceania. The preserved head of a woman of the Tugeri tribe, British New Guinea, obtained by the donor in 1896, is presented by H.E. Sir William MacGregor, K.C.M.G., Governor of Newfoundland.

W. L. H. Duckworth, M.D., Sc.D., has presented a set of eleven stone-headed clubs from Romilly Sound, New Guinea.

Some very important additions have been made to the Solomon Island series, thanks to Professor Bevan: notably two very beautiful "shell-inlaid" chief's maces; a battle-axe with American iron head; clubs, including one of very unusual form; decorated spears; paddles, etc.

A dancing costume, probably from the Banks Group, brought home by the late Bishop Selwyn, has been kindly given by his daughters, Mrs H. K. Fry and Miss Selwyn.

A "horned" club with unusually carved head from Fiji, and other objects, have been presented by the Rev. C. Taylor, D.D., Master of St John's College.

The Curator has added to the series of hafted stone implements presented by him in past years, some interesting examples from the Admiralty Islands, New Guinea, Australia, and other localities.

An example of the Tahitian God of War, *Oro*, of plaited sinnet-work, in the form of a truncheon bearing the outline of a human face, presented by Professor Bevan.

The doll-like figure of the Mangaian god *Tangiia*, obtained about 1822 by the Rev. John Williams of the London Missionary Society, and two very fine examples of the Hervey Island spear-like weapon with serrated blade, presented by John Venn, Sc.D., F.R.S.

The fine series of weapons from the Gilbert Island has again been considerably augmented through the generosity of Professor Bevan.

Library. The Cambridge Antiquarian Society has made its annual gift of serial publications, now amounting to ninety, which will be found recorded in the Society's last Report.

Dr Donald MacAlister, Principal of the University of Glasgow, has presented a complete set of the *Transactions and Proceedings of the Japan Society, London*.

The Secretary of State for India has presented a copy of the Report of Archaeological Exploration in Chinese Turkestan, entitled *Ancient Khotan*.

The Curator has given a complete set of the publications of the second series of the *Hakluyt Society*.

A number of books of archaeological and ethnographical interest have been presented during the year, notably by J. E. Foster, M.A., J. Smith, Esq., J. G. Frazer, M.A., the Cambridge Antiquarian Society, the Curator, and others.

A vocabulary, in manuscript, entitled "Native Words and Notes on the Natives of the Laverton District, Mount Margaret Goldfield, Western Australia, collected in 1904-1906," has been presented by the author, John L. Glascock, Esq.

The Museum series of ethnographical and architectural postcards has been considerably enlarged.

Thirty photographs illustrative of peasant life, taken by the donor, at Banieres, Pontgibaud, Puy-de-Dome, France, have been given by the Curator.

A set of twenty-seven photographs of the natives of Brazil have been presented by Professor Dr Karl von den Steinen.

A series of twenty-two photographs of the natives of British New Guinea, taken by the donor, with a sketch map of the district illustrated, has been presented by G. O. Manning, Esq.

DEPOSITS. F. J. Wootton Isaacson, M.A., Trinity Hall, has kindly placed on deposit a large, bird-shaped bowl of unusual form, finely inlaid with nautilus and cone-shell plaques; and some other objects, from the Solomon Islands.

ACCESSIONS FUND. The following subscriptions and donations have been received by the curator during the past year:

	£	s.	d.
Professor Bevan.....	130	0	0
The Cambridge Antiquarian Society.....	50	0	0
Baron Anatole von Hugel.....	25	0	0
Mrs Walter K. Foster.....	10	0	0
J. Venn, Sc.D., F.R.S.....	10	0	0
J. E. Foster, M. A.	8	0	0
Baroness Anatole von Hugel.....	5	0	0
Major-General The Lord Ralph Kerr, C.B.....	5	0	0

Building fund. Since the issue of the last report, March 14, 1907, £4718. 14s. 6d. have been received or promised to this fund, including the following munificent donations, referred to at the beginning of the present report:

"In memory of Walter K. Foster"

	£
Mrs Walter K. Foster.....	1000
E. Bird Foster, Esq.....	1000
Charles Finch Foster, Esq.....	1000
Mrs Edward Rawlings.....	1000

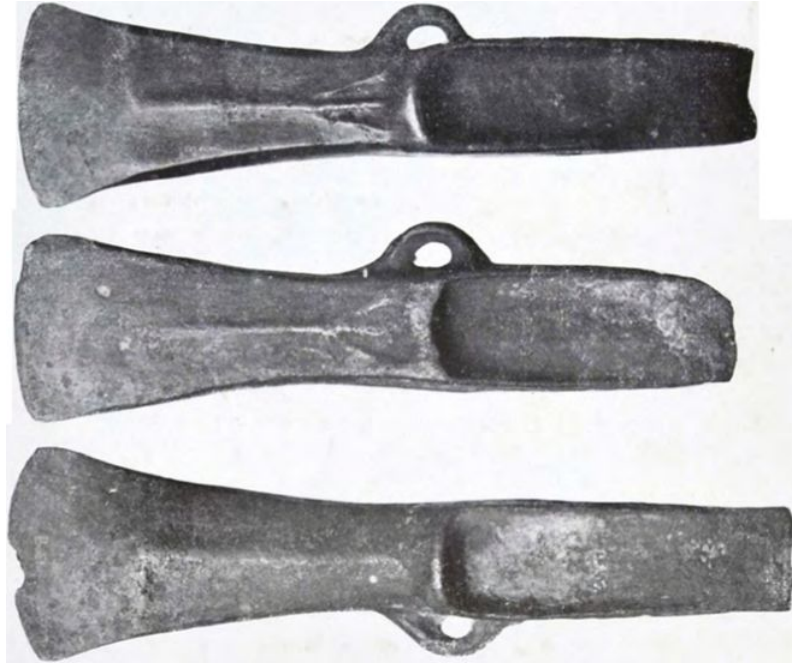
These amounts, with the sum of £2919. 5s. 0d. acknowledged in previous reports, make a total of £7637. 19s. 6d.

The Committee have pleasure in availing themselves of this opportunity to express their gratitude to all who have so generously contributed to these Funds.

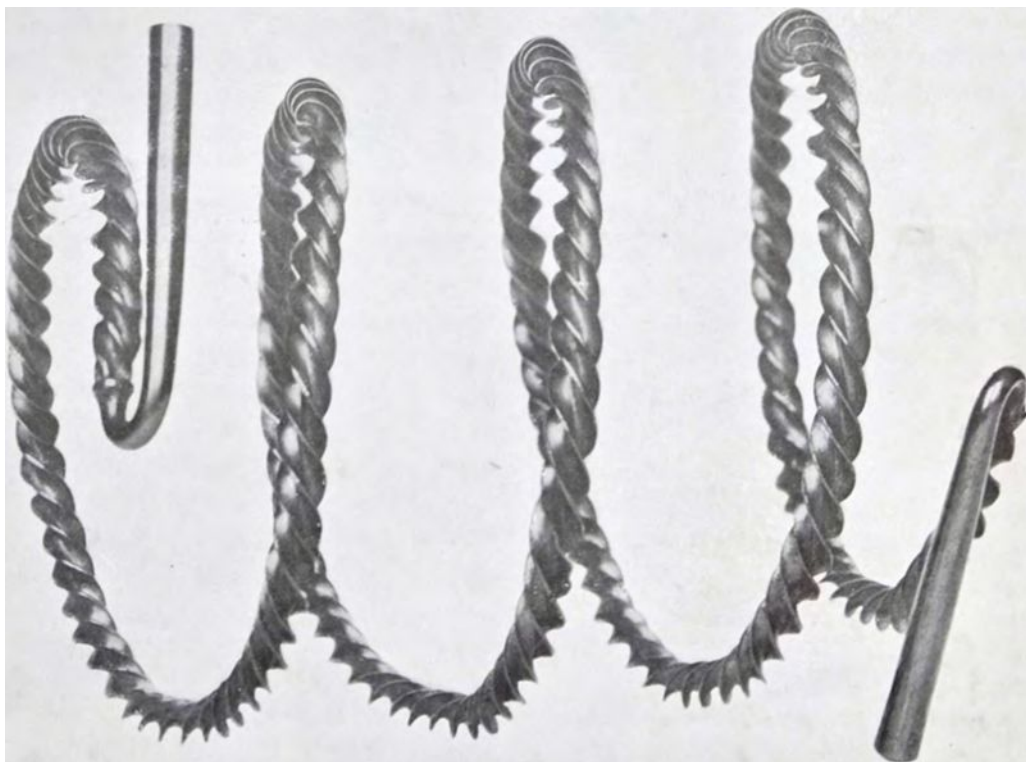
ACCOUNTS. The accounts for the year 1907 have been audited by the Committee (see *Reporter*, University Accounts, p. 97).

Lists of Accessions to the Museum and of objects received on Deposit from January 1 to December 31, 1907, are given in the Appendix.

E. S. ROBERTS,	<i>Vice-Chancellor.</i>	WILLIAM RIDGEWAY.
M. R. JAMES.		J. W. CLARK.
J. VENN.		FRANCIS JENKINSON.
J. W. L. GLAISHER.		D. H. S. CRANAGE.
A. C. HADDON.		



Reduced



Actual aize

Bronze palstaves and gold armilla. Grunty Fen, Haddenham, Cambridgeshire, 1844.

Presented, 1884, with the Cambridge Antiquarian Society's Collection.

(Reproduced from *Camb. Ant. Soc. Comm.* 1907: sec *Hugel*, Vol. xii, p. 96.)

APPENDIX.

I. LIST OF ACCESSIONS FROM JANUARY 1 TO DECEMBER 31, 1907

In those cases in which the objects have not been presented directly, but have been purchased with money subscribed to the Museum Accessions Fund, an asterisk is prefixed to the name of the donor,

I. ARCHAEOLOGY.

BRITISH.

PREHISTORIC.

STONE.

(Unless specially indicated the implement is made of flint.)

RIVER-DRIFT IMPLEMENTS :

1- 10. Ten, including several of unusual form, and a number of rudely chipped examples, Suffolk and Norfolk. **The Cambridge Antiquarian Society.*

CELTS:

11 - 27. Seventeen roughly hewn, including one elongate, double-ended, with ridged faces and sharp sides (6"-2 x 1"-7), Feltwell, N.+; two well-chipped, with ridged backs (5"1 x 1"-7 and 4"1 x 1"-4), Mundford and Cressingham, N.; five similar, including two unusually small examples, one with pointed butt and square cutting edge (2"3 x 1"), Lakenheath, S., and one (? celt), with extremely thin pointed butt (2"-3x1"-1), Elveden, S.; one of peculiar form, with flat expanding cutting edge and tang-like butt (4" x 2"-3), Grimes Graves, N.; and one very flat with both faces roughly chipped, sharp edges, and a rounded butt expanding towards the square cutting edge (4"-3 x 2"8), Icklingham, S.; and

28—33. Six partially ground, including one finely chipped, elongate, with pointed butt, sharp sides, and thin, rounded cutting edge (5"1 x 1"-9). Burnt Fen, C.; and one with ridged faces, square butt and expanding cutting edge (4"-7x 1"-9), Cranwich, N. "*C.A.S.Z* [Nos. 11—33.]

34. One beautifully shaped and highly polished ground from a green jade-like stone, of elongate, flat triangular form, with pointed butt, sharp sides, and curved cutting edge; one face is slightly convex, the other has the lower half flattened (6"6x3"-1), Histon, C., about 1901. (*See* Evan's *Stone Implements*, second edition, fig. 52.) *The Rev. W. G. Searle, M.A.*

PICKS :

35. One large, roughly hewn, pointed tongue-shaped, with sharp sides, hog-back, and square butt (6"x2"-6), Tuddenham, S. **C. A. S.*

CHISELS :

36—38. Three carefully chipped, with sharp sides and ground cutting edge (Is. 4"—4"-5), Lakenheath, S. **C. A. S.*

FABRICATORS :

39—65. Twenty-seven of various forms and sizes, some finely chipped, including nine with rounded ends, flat undersurfaces, convex backs, and carefully chipped edges, Suffolk and Norfolk. **C. A. S.*

66. One finely chipped with rounded ends, flat undersurface and convex back (3"-7 x 1"), Cambridge. *The Rev.*

W. G. Searle, M.A.

DAGGERS:

67. One remarkably fine, flat, wide, with both faces chipped, bearing two lateral notches on one edge and three on the other (5"-9 x 2"-3), Lakenheath, S. **C. A. S.*

KNIVES :

68. One finely chipped, thick, roughly crescent-shaped, with pointed ends (4"-2 x 1"-4), Metwold, N.;

69—72. Four flat, oval: in two both faces are chipped (each 2"-3 x 1"-5), Lynford, N. and Herringswell, S.; and

73—88. Sixteen chipped from flakes: nine trimmed into shape with convex backs: one having both faces carefully chipped (1"-9x0"-7), Eriswell, S.; and six with single edges, which in two are chipped on both faces, and in four on the upper face only. **C. A. S.* [Nos. 68—88.]

BORERS :

89—100. Eleven, including one remarkably large and well-chipped example, with expanding base (6"1x3"2),

Mildenhall, S.; and two smaller of similar outline (1"*9 x 1"-4 and 2" x 1"-8), Methwold, and Weeting, N.; and a number of unclassified pointed implements. **C. A. S.*

SCRAPERS:

• 101—120. Twenty of various forms, including two small examples, one oval (imperfect), Wangford, S., and one circular (d. 1"-2), West Tofts, N.; and three rough, with spoon-like ends, Lakenheath and Icklingham, S. **C. A. S.*

HAMMERS :

121, 122. Two of quartzite: one, the half of an oblong example, with flattened faces, rounded sides and square end, bears a central, medium-sized, cup-shaped perforation (breadth 2"), Elveden, 8.; and one a large oval pebble, with

+ The letters C., S., and N., printed after the names of places, indicate the counties of Cambridgeshire, Suffolk, and Norfolk.

C. A. S. stands for the Cambridge Antiquarian Society.

rounded sides, drilled with an unusually large, cup-shaped perforation (4"3 x 3"8; d. of perforation 1"), Lakenheath, S. *C. A. S.

ARBOW-HEADS :

Tanged and barbed.

123—137. Fifteen of various sizes and forms, including : one flat, straight-sided, with wide truncated barbs, tang missing (1"-4 x 1"3), Cavenham, S.; two similar, but more elongate, one barb missing in each (Is. 1"-6 and 1"-4), Mildenhall and Lakenheath, S.; one thick with ridged back, straight sides with serrated edges, and small incurved barbs, tang broken (1"-3x0"-8), Burnt Fen, C.; one of unsymmetrical and curved outline, with one long pointed barb and small tang (1"-3x1"), Mildenhall, S.; and one 'spade-shaped' with incurved barbs and large tang (1"-4x1"), Burnt Fen, C. *C. A. S.

138—141. Four, small, of various forms, Charlbury and Stonesfield, Oxfordshire. *R. W. Wilson, Esq.*

Tanged.

142—145. Four : one roughly chipped, thick, 'spadeshaped,' with taper tang (1"-1x0"-9), Croxton, N.; one roughly chipped, triangular, with very long stem-like tang and angular shoulders (1" .6 x 0"8), Eriswell, S.; one triangular with ridged back, and triangular tang forming pointed shoulders (1"2 x 0"8), Weeting, N.; and one roughly chipped from a flat, broad flake, with cusped shoulders and small tang (1"-8x 0"-7), Santon Downham, S. *C. A. S.

Leaf-shaped.

146—155. Ten: including some finely chipped examples, viz.: three with both faces chipped—one elongate pointed oval (1"-4 x 0"-5), Lakenheath, S., one broader with rounded base (1"3 x 0"-6), Wangford, S., and one similar but larger, with more pointed base (1"-6x0"-6), Burnt Fen, C.; one with chipped back, and broad, rounded base (1"6 x 0"-7), Eriswell, S.; one pointed oval with partially chipped back and front (1"-5 x 0"-8), Lakenheath, S.; and two pear-shaped, one very thin, with broad base, and partially chipped back (1"3x1"), Undley, S., and one smaller, rounded, with both faces chipped (1"-2x0" 7), Undley, S. *C. A. S.

156, 157. Two with rounded bases (imperfect), Charlbury and Stonesfield, Oxfordshire. *R. W. Wilson, Esq.*

Lozenge-shaped.

158—161. Four: one large, thin, of rounded contour, with both faces finely chipped (2"-1 x 0"-9), Undley, S.; and three smaller, broad, of similar size, including one of exceptionally fine symmetrical chipping (1"-3x0"8), Lakenheath, S. *C. A. S.

Triangular.

162—172. Eleven, broad and narrow examples including three 'chisel-ended,' two large (1"-2 x 1" 3 and 1"-2 x 1"-3), Santon Downham, S., and Grimes Graves, N., and one small of irregular outline, chipped on both faces (1"-1x0"-7), Burnt Fen, C.; and three with cusped bases, including two symmetrical, deeply indented, shewing remarkably fine chipping (1"-4x0"-9 and 1"-2x0"-8), Mildenhall, S., and Kilverstone, N. *C. A. S.

Single-barbed.

173—177. Five: one thick, chipped on both edges, with cusped base forming one large pointed tang (1"-8 x 0"-8), Lakenheath, S.; and four finely chipped on one edge only, two broad, and two slim, Icklingham and Mildenhall, S. *C. A. S.

JAVELIN-HEADS :

Tanged.

178. One, with very large broad tang and nicked shoulders (2"x0"9), Didlington, N. *C. A. S.

Leaf-shaped.

179—181. Three, including one flat, elongate, pear-shaped, with both faces chipped (2"-6x1"-3), Weeting, N. *C. A. S.

Lozenge-shaped.

182—184. Three, roughly chipped (2"-3 x 1"-4—2" x 1"1), Eriswell, West Stow, and Cavenham, S. *C. A. S.

Triangular.

185—188. Four of various sizes, including two well-chipped, 'chisel-ended' (1"-7x 1"-4—r'-4x1"-4), Mildenhall and Icklingham, S. *C. A. S.

Single-barbed.

189, 190. Two carefully chipped : one flat with pointed tang (1"-7 x 1"4), Mildenhall, S.; and one thick of unusual form, with large, broad, square-ended tang (1"-5 x 1"-6), Eriswell, S. *C. A. S.

UNCLASSED:

191—217. Twenty-seven carefully chipped of various sizes and forms, Suffolk and Norfolk. *C. A. S.

BRONZE.

218—220. Three single-looped, socketed celts, with moulded rims: two plain with expanding blades (3"3 x 1"6 and 4"-2 x 1"-8); and one square-sided with expanding blade and straight cutting edge, bearing three vertical beads either face (3"-3 x 1"9);

221. A dagger-blade of elongate triangular form, with bevelled edges a two perforations in the rounded base (1. 3"1);

222. A diminutive square-sided chisel, with rounded, taper butt (1. 2"-*and*

223. An ear-ring, penannular, crescent-shaped, with central swelling a taper ends (? Roman), Lakenheath, S. *C. A. S. (Nos. 218—223.)

224. A massive stud, with concave disc-head and stout, rounded tang (d. head 1"1), Mildenhall, S. *R. W. Wilson, Esq.*

EARTHENWARE.

225. A mug-shaped vessel in light 'biscuit' clay, of exceptionally fine make; the incised pattern is divided into two zones (the upper set with rows of diamonds, the lower with vertical beads of conjoined diamonds), by a hoop-like band shewing a medial groove of crescent-shaped lines (finger-nail marks) a plain, marginal beading. The bow handle is incised on the flat face and side respectively, with a chain of lozenges set in a panel, and a band of vertical incisions. The sides of the vessel above the handle converge slightly towards the mouth, and below the handle towards the flat base, which is sunk within a faint marginal bead and bears a wheel pattern (5" x 5"8; d. of mouth, 4"-Fordham, C., about 1900. *Baron Anatole von Hugel, M.A.* (See Plate II.)

226. A massive oak stake with roughly pointed base (1. 72"). From the site of the British defences of the great ford at Brentford. *Montagu Sharp, Esq.* (See *Arch. Jour.*, Vol. LXIII. p. 25.)



R. 1907, 225

Scale approx.
3/4



British handled vessel of earthenware. Fordham, Cambridgeshire, 1900.

Presented, 1907, by the Curator, Baron Anatole von Hugel.

ROMAN.

BRONZE.

227, 228. A disc-fibula, with central collet (? for enamel), and wide, double-beaded rim (originally gilt), provided with square catch and tag for pin (d. 1" 4); and a bronze stud with large disc head and square-sided, taper tang (d. 1"-2), Kingston, C. O. *Montagu Benton, Esq.*

229 *a—c.* Three slim bracelets: one plain of wire with interlooped, spirally twisted ends; one thicker, of flattened wire, shewing transverse grooves, made to open split-ring fashion, and set with five bronze beads; and one penannular, consisting of a narrow band, with recurved hook ends, the face being stamped with a row of S-shaped devices, Denton, Lines. *Mr E. Barber.*

230. A key, made of a thin folded plate, with perforated bow, piped stem, and nicked web (l. 1"-8), Cardel Farm, Lakenheath, S. *C. A. S.

IRON.

231. A stout, tanged blade of a knife (resembling a modern French kitchen knife), 10" 6 x 1" 3. Merton Hall, Thetford, N., 1874. *Lord Walsingham, High Steward of the University.*

232 *a, b.* Two punches: one square-sided with conical point (l. 6"); and one (imperfect) with rounded sides;

233, 234. Two 'cold-chisels' with stout, shouldered points (ls. 4" 5 and 3" 3);

235. A pointed tool, with cylindrical neck, and taper, square-sided head, ? use (l. of head 5" 5); *and*

236—238. A number of larger and smaller square-sided nails with large, flat heads (ls. 1"-7—4" 6); a rivet, with square-sided tang, bearing one oblong, and one disc head (l. 3" 3); and a number of miscellaneous rings, burrs, etc., Roman Villa, Combe Down, Bath, 1860-1870. *G. E. Cruickshank, M.A. See No. 248. [Nos. 232—238.]*

EARTHENWARE.

Nine urn-shaped vessels, viz. :

239. One globular, of grey clay, with overhanging rim, sloping shoulders and taper base, decorated with five incised lines (5" 7 x 6" 1), Cherryhinton, C., 1907. *C. A. S.

240. Portions of a number of plain and decorated vessels of various ware. Thetford, N. *Lord Walsingham.*

241. One tall, egg-shaped, of grey clay, with flat base

and overhanging, rounded rim; *the neck bears a bead and the body two wide bands of spirals in 'blind tooling' (11"-6x9"-6), Denton, Lines., 1907. *C. A. S.*

242—248. Seven : two of dark grey clay, with beaded rims and necks, prominent shoulders, and small flat bases: one with three perforations in the base and two perforations in the neck (5"-6x8" and 6" 1x 8" 4), Barrington, C. (Foster Bequest); one small, of grey clay, wide-mouthed, with beaded rim, and a pair of slight neck beads (3"-7 x 4" 7), Cambridge (Freeman Coll.—*C. A. S.); one squat, shewing a blue-grey surface slip, wide-mouthed, with overhanging rim, a wide bead on neck, and small flat base (6"-3x8" 2), from a barrow, Clifton, Shefford, Beds. (Inskip Coll.—*C. A.S.*); one squat, of grey clay, wide-mouthed, with flat projecting rim, and wide beaded base bearing two incised concentric rings (7" x 9"-3); and one of dark grey clay, with narrow, beaded mouth, the sloping shoulders encircled by grooves, and a flat base bearing four perforations (7"-2 x 7"), Hauxton, C. (*A. v. Hugel*); and one tall, plain, of light clay, with heavy, overhanging rim tapering towards the flat base (8" 4 x 7" 6), Isleham, C., 1882. (*A. v. Hugel*.) *Restored in the Museum, and not previously recorded.*

249. A quantity of fragmentary pottery illustrative of many varieties of ware; *and*

250—255. Six square tiles of red clay, viz.: four (10" 5), two bearing three roughly incised lines forming a star, one with two broader lines forming a cross; and one plain, and two smaller (8"), plain, Roman Villa, Combe Down, Bath, 1860-1870. *G. E. Cruickshank, M.A. [Nos. 248—255.]*

256—258. Three clay spindle-whorls, one with convex face (? Roman), Suffolk. *C. A. S.

STONE.

259, 260. Two moulded capitals of columns;

261. An oblong hewn slab, one side bearing a flat-faced ridge, near the lower end of which is a square perforation, and the adjoining side a square-sided groove of similar width (27" 7 x 22"). From a door-way; *and*

262. A roughly rounded, thick slab, with large, cup-shaped depression in the face (d. about 14"); and other fragments, Roman Villa, Combe Down, Bath, 1860-1870. *G. E. Cruickshank, M.A. [Nos. 259—262.]*

SAXON.

BRONZE.

263. A plain finger-ring of round section, shewing a flat, oval facet; *and*

264. A pair of plain tweezers (l. 2"). Lakenheath, S. *C. A. S. [Nos. 263, 264.]

265. Fragments of bronze (gilt) and iron objects, and coarse pottery (? date). The Mill, Hauxton, C., 1907. *L. J. Wills, B.A.*

EARTHENWARE.

266—270. Five cinerary urns, viz.: four richly decorated with a variety of stamp marks: one tall, with rounded shoulders, of light clay, decorated with three patterned

bands of rayed rings, and unusually deep, pestle-shaped devices (9" x 8" 5); one smaller, spherical, with two ornate bands, and seven shield-shaped panels, bearing quatrefoil devices (6" 2 x 6" 8); one with more prominent shoulders, shewing seven faint oval bosses, decorated with rows of triangles and roundels (7" 3 x 8" 8); and one of unusual form, bearing a cable moulding below the thin upright rim, and nine pear-shaped ridges on the flat shoulders, decorated in unsymmetrical fashion (7" x 9" 6); and one plain, roughly fashioned, deep, bowl-shaped, with rounded base (7" 7 x 9" 4). From Cambridge burial grounds. (*C.A.S.*) *Restored in the Museum, and not previously recorded.*

MEDIAEVAL AND LATER.

METAL.

271. A morian of iron, decorated around the base with ten brass studs, which held the lining. 17th century. Bury St Edmunds, S.;
- 272—274. Three bronze buckles, including one oblong, of peculiar construction, provided with a knobbed, U-shaped suspension hook (1"-6 x 1"-3). 15th century. Grantchester, C.;
275. An elongate, bronze strap-end with moulded, square terminal. 15th century ;
276. A moulded, cruciform object of bronze bearing an oval pendant embossed with an acorn ; *and*
277. A small trefoil plate of bronze bearing a spoon-shaped pendant (imperfect). 16th century. Lakenheath, S. *C. A. S. [Nos. 271—277.]
278. A small disc stud of brass, bearing a medallion, inscribed, 'GEOR-D-GRA-' *John J. Jennings, Esq.*
279. A large bronze shoe-buckle, oval, concave, with openwork decoration. Lakenheath, S.; *and*
280. A small globular bronze bell (for a horse), with square tang, bearing an embossed shield charged with a Tau cross (d. 1"-2). 15th century. York Street, Cambridge. *C. A. S. [Nos. 279, 280.]
281. An incised oblong book-clasp of bronze. Cambridge. *Purchased.*
282. An oblong door-lock, the outer plate decorated with a single buttress and a V-shaped, floral scroll (9"8x5"9). 15th century. Bought in Cambridge. *C. A. S.
283. A large mortice-lock, for an inner door (10"-4 x 6"-7) with lacquered brass fittings, consisting of drop-handles (rococo style), and a pair of openwork escutcheons bearing the monogram 'G.R.' etc.; and a steel key with solid moulded stem, the oval bow displays the royal arms in openwork, and the oblong web is perforated with the initials 'G.R.' the upper teeth being cut to form the date 1761. ? From a Royal Palace. *Transferred from the Fitzwilliam Museum.*
- Nine iron keys, viz.:
284. One, with oval, cusped bow (1. 2"-8). 16th century. Cambridge. *The Rev. F. G. Walker.*
285. 286. Two plain, a larger and a smaller, with cusped bows. 16th century. Cambridge; and Lakenheath, S. *C. A. S.
287. One large, with loose ring. 17th—18th century. Cambridge. *Purchased.*
288. One massive, with cusped bow, and unusually large S-shaped web (1. 6"-8). 16th century. Chesterton, C. *Edwin Wilson, Esq. ; and*
- 289—292. Four: one with depressed, oval bow, and one with oval, cusped bow, 16th century; and two (steel): one with openwork bow (1. 2"-2); and one with dolphin-pattern bow (L 2"-8). 17th century. Chichester. *Baron Anatole von Hugel.*
293. An iron rack for purifying clay pipes, with three spirally-twisted cross-bars (10"4 x 11"). Saffron Walden ;
294. An ornate, oblong pewter snuffbox, the lid inlaid with copper (2"-9 x 1"-3). Stretham, C. ;
295. A cylindrical rush-light stand of sheet iron, with decorative pierced work (7"-6 x 4"-8). Milton, C.;
296. A pair of ornate brass snuffers. Stretham, C.;
297. A double-ended bronze pestle (1. 8"-7). Bury St Edmunds, S.;
- 298, 299. Two pairs of decorated steel sugar-cutters. St Neots, Hunts.;
300. A pair of iron nut-crackers, with incised decoration. 17th century. Cambridge;
- 301,302. Two iron dibbers. Fenstanton, Hunts.; *and*
- 303, 304. Two sickles with long blades. Mildenhall, S. *C. A. S. [Nos. 293—304.]
305. A pair of hollow-ground scissors of iron, with looped handles (1. 6"-5). Chichester. *Baron Anatole von Hugel.*
- 306,307. Two pairs of compasses: one rude, of iron (1. 4"). Chesterton, C. ; and one of bronze (iron points missing), with faceted terminal knob, and curved ornate arms (1. 3"-4). 16th century. Lakenheath, S.;
308. An ornate, three-footed, flat-iron rest (1. 12"-2). Cambridge;
- 309, 310. Two hakes: one with toothed, and one with perforated bar. St Neots and Hail Weston, Hunts. ;
311. A steel-yard with wooden balance (1. 9"-3). Cambridge ;
312. A flat disc (cast-iron) bearing a human mask in relief (d. 2"-9). ? weight;
313. A man-trap, stamped 'S. GRIFFITHS' (1. 34"). St Neots, Hunts.; *and*
314. A fox-trap, inscribed ' C. HARMAN ' (1. 16"-8). Potton, Beds. *C. A. S. [Nos. 306—314.]

EARTHENWARE.

315. A flat-bottomed, green-glazed jug, with short neck, and flat-sided bow handle (12"-7 x 10"2). 15th—16th century. High Street, Chesterton, C., 1904 ; *and*
316. A green-glazed pipkin, with three feet (6"2x7"). Free School Lane, Cambridge, 1907. *C. A. S. [Nos. 315, 316.]
317. Fragments of Mediaeval pottery, mostly jug- handles. Potter's Lane, Ely, C., 1907. *Mr F. T. Cross.*

WOOD, ETC.

318. A rough, diamond-pattern frame-work, from the <y old South door of Lakenheath Church, Suffolk. (? date.) *The Vicar and Churchwardens.*
319. A poppy-head (finial missing), from a bench, finely carved in oak, shewing on either side the monograms of Our Lord and Our Lady respectively, 16th century. From a local church. *John J. Jennings, Esq.*
320. A cylindrical pottle of polished wood, with oblong handle, bound with copper bands, engraved 'CAMBRIDGE,' and stamped on the sides with an acorn surmounted by a G crowned (7"4 x 4"-2). *J. E. L. Whitehead, M.A., Town Clerk.*
321. 322. A wooden mangle, formerly used in flattening straw for plait-work, and two iron tools for splitting the straw. Weston, Herts. *M. R. Pryor, M.A.*
323. A salt receptacle of cow's horn, with cork stoppers, *n* Formerly used by labourers. Over, C. *C. A. S.
324. A model, in clunch, of the first Railway bridge, h Hills Road, Cambridge, 1850. (7"5 x 17"5). *Messrs C. Plumb.*

FOREIGN

EUROPE.

PREHISTORIC.

325—380. Three atone adzes: two larger, much worn; and one email, flat, with square cutting edge, of jadeite (1"6x1"1); two quartzite pebbles: one a hammer-stone; and one with a double groove; and fragment! of rough earthenware vessels. From a Gaulish camp in La Cheir, Banieres, Puy-de-Dome, 1007. *Baron Anatole von Hugel*.

381—336. Six Hint arrow heads: five stout, tanged, with both faces finely chipped, including one large with serrated edge (2"-S x 1"); and one tanged and barbed, elongate, with one face well-chipped (2"-2x0"8). Perugia, Italy. *R. C. Bosanquet, M.A.*

337. A plaster cast of a bronze axe-head from Pozzuoli with yoke-like and cruciform raised designs (6"5 x 8"). An example of similar form (from the Northern Peloponnesus) is preserved in the Museum. (See Annual Report 1904, No. 681.) *The British Museum*.

GAULISH.

338—340. Three bronze objects (? cloak-fasteners); rounded or fiat bars (with incurved hooks at either end), bearing a circular perforation and an incised pattern (one i. 1"6; two (a pair) 1. 0"7). Gergovia, near Clermont-Ferrand. **Mrs Walter K. Foster*.

ROMAN.

341, 342. Two bronze fibulae: one circular, with conical boss and beaded rim (d. 0"-9); and one taper, bow-shaped, with marginal grooves, and large, openwork pin-catch (1.3"); and

343—346. Four small keys: one of bronze, with fiat, moulded, square-sided stem, surmounted by a small peaked loop, and oblong web set with six teeth (1"-6); and three of iron, with fiat, heart-shaped bows (1s. 2"—2"6). Gergovia;

347. A spoon of speculum metal, with thick, circular bowl and long, cylindrical, taper handle (1. 6"3). St Arils de Tardes, Creuse; and

348. A finely moulded bason-shaped bowl of red 'Samian' ware, decorated with a broad central band of arabesque pattern: stamped on the bottom inside 'COCI OFIC,' in a double-lined ring on the bottom (3" 7x9"-2). Lezoux (but of Graufesenque style). **Mrs Walter K. Foster*. [Nos. 341—348.]

349 a—e. Five fragments of decorated 'Samian' ware. Lezoux. *L. Mason, Esq.*

350. A small, two-handled vessel of reddish clay coated dark brown: urn-shaped, with taper base, decorated with four medallions of mythical scenes, etc. (3"-6 x 2"-7). Chamalieres, Clermont-Ferrand. **Mrs Walter K. Foster*.

351. Fragment of marble moulding. Temple of Mercury, summit of Puy-de-Dome. *G. H. Brandt, M.D.*

352. An oval sling bullet of lead (1.1".9). Ober Laibach, Austria. *The Rev. J. B. Pearson, D.D.*

MEROVINGIAN.

353. A fiat, oval buckle of bronze, with elongate, triangular tag, the scalloped margin set with five plain bosses, and the entire face covered with an incised and interlaced pattern (2"-3x4"6). Buzancy, Soissons, Aisne (Puysegur Coll.). **Mrs Walter K. Foster*.

MISCELLANEOUS.

354, 355. A rude, urn-shaped vessel of red clay (4"7 x 4"-6); and a piece of the lava coffin, in which, with

a skeleton (? of a monk) it was found, 9th—10th century.

St Pierre le Chastel, Auvergne. Found by the donor, *The Rev. C. Vaisson, Cure of St Pierre*.

856—868. Thirteen bosses and plaques of bronze or brass, from horse-trappings, belts, etc., of various designs, including five with masks (medusa and gorgon's head), and one with flat face incised with human figure design.

Roman and later. Puy-de-Dome district (Compagnon Coll.);

369. The right cheek-piece of an iron horse-bit, with brass decoration (6'-9). ? date. Chazaloux, near Banieres, Puy-de-Dome;

370. A massive pair of wrought stirrup-irons, with oval ring base, and openwork boot protector. 16th century.

Chartreuse Monastery, Isere; and

371,372. Two horse-brasses, crescent-shaped, one shewing a human profile. Puy-de-Dome district. **J. E. Foster, M.A.* [Nos. 356—372.]

373. A chest-lock: the oblong plate with scalloped base, decorated with *applique* openwork tracery (10"1 x 9"2).

15th century (French workmanship); and

374. A small lock on oblong plate, with expanding trefoil end, and trefoil guard-plate finely chased with fleur-de-lys design (7"-8x5"-1). 16th century (? Nuremberg). Bought in Cambridge. **C. A. S.* [Nos. 373, 374.]

375. A plain coffer-lock, with double bolts (7"5 x 4"1); and key, with oval cusped bow (1. 6"-8). 17th century.

Chartreuse Monastery, Isere; and

376—391. Sixteen keys for cupboards and doors: fifteen with ornate oval bows shewing variants of two designs (1s. 3" 7—8"2), 17th century; and one welded from a plate (1. 5"9), 16th century. Puy-de-Dome district, France.

**Baroness Anatole von Hugel*. [Nos. 375—391.]

392—399. Eight keys: five with oval bows filled with openwork patterns (two with columnar stems); one finely moulded with dolphin-pattern bow, and three-sided columnar stem (1. 5"); one massive, for a coffer, with cusped bow (1. 4");

17th century; and one long, double-ended, the solid stem being provided with a sliding heart-shaped grip (1. 7"),

18th century. Puy-de-Dome district. **J. E. Foster, M.A.*

400, 401. Two iron keys: one large (ecclesiastical) for a tumbler lock, with semi-circular, fiat bow shewing an imperial crown in fretwork, and octagonal stem with moulded collars (1. 5"-2); and one with circular bow, filled in with an octagonal design in openwork, and faceted stem (1. 5"),

16th century. Taormina, Sicily. *Miss Julia Rogers*.

. 402. An ornate belt buckle, for chatelain, in cut steel. ^

17th century. Clermont-Ferrand. **Baroness Anatole von Hugel*.

403. A bronze implement (? pastry cutter), provided with an S-shaped arm, moulded in form of a bird, bearing the wheel and a broad knife blade. ? 17th century; and

404. A two-pronged fork of iron, the flat, expanding handle-end faced with two plaques of mother-of-pearl (1. 4"-7). 17th century. Clermont-Ferrand. *J. E. Foster*,

M.A. [Nos. 404, 405.]

405. An ornate iron hake or pot-hook (1. 37"7);

406. An iron sconce, with extending four-jointed arm; and

407. A small, coffer-shaped trinket chest of wood, covered with stamped leather, with iron mountings (5"5 x 3"5). 16th century. Auvergne. *L. Mason, Esq.* [Nos. 405—i07.]

408. A flat, oval trinket-box of ivory with silver mounts, bearing a painted figure design (3"-7 x 2"7). The Loire, France;

409. A cylindrical wooden needle-case, with painted design of cupids, etc. (1. 4"). 18th century. Lorraine, Germany; *and*

410—416. Seven diminutive models, carved in wood, of figures in the Cathedral of Santiago de Compostella, Spain; *Mrs Bendall*. [Nos. 408—416.]

417. A relief carving in oak, of a man's head and shoulders (5"-8 x 2"-4). From a 16th century chest. German. *The Executors of the late Professor Newton, F.R.S.*

418. A small, boat-shaped vessel of pale green glass, with ornate scroll handles and expanding ring-foot (2"-5 x 4"-4). 16th—16th century. (Venetian.) *Professor Commendatore Enrico H. Giglioli*.

ASIA.

419. A heavy, roughly chipped, wedge-shaped implement (9" x 3" x 3"-3). Sinai. *The British School of Archaeology in Egypt*.

420—425. The upper half of a large, finely ground celt (b. 2"-3). Yezo four well-chipped arrow-heads, namely, two tanged, one plain, shouldered (0"9 x 0"-4), and one with serrated edge (1".2 x 0"-4), and one small, triangular, with cusped base (0"-8x0"5); *and* a pointed implement with edged, square base, ? use (2"-2 x 1"-5), from Southern Japan. *Miss E. R. Gillett*.

426—428. Three rude figures in light clay: two representing horses; and one a mounted horseman. (From graves.) Cyprus. *R. Bosworth Smith, Esq.*

429. Fragments of ancient glazed wall-tiles. Golconda, Hyderabad, India. *Mrs Bendall*.

430. A bronze disc-mirror, with a perforated boss and decorative border (d. 4"). China. *Baron Anatole von Hugel*.

AFRICA.

431. A wooden boomerang (1.15"5). 12th Dynasty. Gizeh;

432, 433. Two many-chambered soul houses roughly fashioned in clay. 11th—12th Dynasty; *and*

434—446. Thirteen diminutive mud models of vases. 18th Dynasty. Rifeh, near Siut; *and*

447 a—c. The left foot of the mummy of a Roman infant, with leather shoe and decorated sole of a sandal. Egypt. *The British School of Archaeology in Egypt*. [Nos. 431—447 c.]

AMERICA.

448—456. Nine stone arrow and spear-heads of various forms, including three of quartzite. Virginia. *Major-General Sir Matthew Gosset, K.C.B.*

457—462. A small, triangular, flat-sided celt (1"9 x 1"-3); a small, square-sided chisel with sharply ground edge (butt missing); and four spear-heads (obsidian), including two bat-shaped, finely chipped examples (2" 9 x 1"-3 and 3"3 x 0"9). Northern Yucatan;

463—476. Fourteen celts: one water-worn, flat, with rounded sides and expanding cutting edge (4"-9 x 2"-1); and thirteen polished: two larger with flat sides (one with expanding cutting edge, 3"4 x 1"8); and eleven small, with square butts, including one elongate (? chisel), 1"-9 x 1", and one flat, triangular (1"-9 x 1"2);

477. A stone bark-cloth beater of oblong section, with grooved faces, and deep side grooves for attachment to a handle (2"-5x2"-1; 1"-4 thick);

478. A number of polished stone beads of various forms: a few made of untrimmed pebbles; *and*

479—481. Three pieces of decorated earthenware, including a small, hollow mask of a dragon, with lateral perforation. Guatemala. *A. P. Maudslay, M.A.* [Nos. 457—481.]

482. A cylindrical head of a staff cast in copper; the socket is decorated on either side with a double row of semidetached figures of five varieties of birds, and two larger birds (toucans) are shewn perched on the top bar of the openwork triangular finial (1. 6"-2). Peru (1823). *Baron Anatole von Hugel*.

483—486. Four vessels: two of red clay, one tall with oval mouth, bears a moulded human mask, and a pair of strap-like loops (6"-5x6"), and one small, flat, lozenge shaped, with perforated ends, decorated on the overhanging rim with bosses, etc. (1"-8 x 4"-8); and two (whistles) of coarse clay: one pear-shaped, with flat rim, bearing large bosses (2"-8 x 2"-2), and one globular, with splay foot and nipple-like, perforated top, is clasped by the moulded figure of a frog, its body forming a lateral loop (3"-3 x 2"-8). Antioquia, Colombia. **Major-General Lord Ralph Kerr, C.B.*

II. FOLK-LORE.

487. Model of a child's doll, as made from a poppy flower by German nurses. Giengen, Stuttgart (1870). *Miss Johnson*.

488, 489. Two carved mandrake roots, representing a male and a female human figure. (Used as charms when children are desired.) Bought at Athens. *R.M. Dawkins, M.A.*

Ten objects from India, viz.:

490—495. Six ornate bangles of glass, (offered when a child is desired); and a horse roughly made of rags, (offered after the birth of a son). Taken from the Bangle tree,

Ahmadabad;

496. A 'lucky' necklet: a strand of brown and orange wool, with seeds, a bone pendant, and a glass bangle attached. ;

497. A minute clay saucer (d. 1"-2), from the shrine of the goddess of small-pox -----, Nepal; *and*

498. A set of circular cards (d. 4"-5) painted with various designs. For fortune-telling. Calcutta; *and*

499. A 'lucky shell' (*Turbinella*). Ceylon. *Mrs Bendall*. [Nos. 490—499.]

III. ETHNOLOGY.

EUROPE.

(Tin lamps superseded the iron cruises, but even they are now no longer made); *and*

503. A sickle (*cerpe de vigneron*), with ornate bone handle, and iron blade shewing a floral pattern in openwork (1. 8"-5). Pontgibaud, Puy-de-Dome;

504. *La Servante* (The Maid): a wooden framework of vertical and horizontal bars, the flat face bearing decorative

FRANCE.

500, 501. A lamp-suspender, consisting of an elaborately carved flat oblong piece of wood, the openwork pattern including a human figure and other devices; 25" x 2"-7); with an iron lamp shaped like the Scotch cruise.

502. A lamp of similar form to the last but made in tin.

g and the date 1781 (formerly used for preventing the bed clothes slipping); and

l. An oblong puzzle snuff-box of wood. Bauieres par Pontgibaud ;
i. A pair of enamelled, copper-gilt pendant ear-drops. Clermont-
d; *and*
l. 508. Two finely carved square frames of wood, with closely set
formerly used for the making of braided bands (4"×8x7" and
"2). Banieres and Clermont- Ferrand. *Baroness Anatole von Hugel*.
00—508.]

l. 610. Two implements similar to the last, but smaller, and bearing
t ornamental patterns; one, fitted with n rough wooden bow, shews a
l band in process of manufacture;

l. A distaff of obsolete form, with pear-sloped head in basket-work
); *and*

l. A pair of hand-plaited garters shewing a 'chevron pattern in
ed wools. (Part of obsolete costume of girls.) Banieres. *Mlle Louise*
[Nos. 509—512.]

—516. A distaff (still in use), consisting of a plain forked stick; two
oughly turned spindles with grey wool attached, and a skein of white
and

l. A cylindrical iron mortar (1. 3"×7), with turned wooden pestle (for
Banieres; *and*

l. A bread tally: a notched stick of hazel-wood (1. 17"×8). From a
shop, Pontgibaud. *Madame Coulon*. [Nos. 513—518.]

AFGHANISTAN.

l. A silver dress-fastener : a pair of pins with triangular enamelled
and connecting chain;

l. 532. Two small copper incense burners, with perforated lids; *and*

l. A set of eight, small, painted clay figures of Mohammedans in various
as of prayer. Kabul. *Mrs Bendall*. [Nos. 530—533.]

INDIA.

l. A skull-cap of black cloth (Ghurka);

—538. Skeins of red and orange wool with beaded, ^ looped ends ;
g of pink woollen beads ; and bunches of composite flowers, (used
ssing the hair); and red pigment wherewith to paint the caste-mark
forehead ;

l. A pair of brass ear-studs in *repousse* : a disc, shewing ten rayed
with a central pellet of green glass;

l. An umbrella, with wooden frame, of painted and varnished

l. A small semicircular comb of black wood with incised
tion ;

l. An oblong, octagonal trinket-box of brass, with *repousse*
tion (5"×6x3"×8);

—545. Three spoons of brass: one small, ornate, for libation (1.
nd two with long, flat, handles, for domestic use (ls. 13"-4 x 11"-7);

l. 547. Two small vessels of brass: one urn-shaped, bearing
tely incised and plain copper bands (3" x 3"-7); and one plain,
ical, with over-hanging rim (3"x3"×4);

l. A baby's teething stick: a lacquered cylinder with a nut-meg and
either end;

l. A set of three knives in a leather sheath: one large, with broad,
aped blade and carved horn handle; and two smaller with plain
n handles (Ghurkas);

l. 551. Two ornate brass ewers, a larger and a
r, with fluted bodies and snake-pattern handles. For offerings
and ablutions;

519, 520. Two walking sticks, the handles carved with
grotesque human figures and masks: one being provided with a
looking glass, and one with a snuff-box; and

521. A pair of iron ox-shoes. Banieres. Monsieur Jean
Coulon. [Nos. 519-521]

GERMANY.

522. A wool-winder of turned wood (h. 27"); *and*

523. A small, oval snuff-box of stamped bark.

Lorraine. *Mrs Bendall*. [Nos. 522, 523.]

NORWAY.

524. A wooden, boat-shaped vessel carved in the form of a
cock (4"×3x7"-5). 18th century. Setersdal District, Norway.
Baroness Anatole von Hugel.

GREECE.

625, 526. Two wooden reaping hooks, for right and left-
handed use, respectively, with oblong bases provided with three
finger-holes. Thessaly ;

527. A rough model of a primitive wooden lock (14" x 9" -5),
with bolt, wards, and wooden key; and

528. A small syphon with globular body of glazed clay
(7"x6"-7). Used for drawing wine from wine-jars. Naxos,
Cyclades ; *and*

529. A reed pipe (1. 7"-2). Sparta. *A. J. B. Wace, M.A.* ("Nos.
525—529.)

ASIA.

552, 553. Two brass lamps : one small hand-lamp, with
triple, spoon-shaped bowls and lateral loop handle ; and one
hanging-lamp and incense-burner (for out-door use), with a
massive ornate loop and pendants, to which the suspension chain
is attached;

554, 555. Two small receptacles of brass, for offerings: one, a
pair of cups on an ornate oblong base; and one, saucer-shaped
with expanding foot;

556, 557. Two ornate brass hand-bells, the handles bearing
distinct religious emblems ; and

558. A Buddhist rosary of brown and black wooden beads,
with crystal and brass pendants. Nepal;

559 *a—e*. Five painted clay models of fruits ; and

560. A small, purse-shaped bag of embroidered yellow silk
(for spices). Hyderabad ;

561. A *hookah*, with large, ornate clay bowl, turned, inlaid
stem, coconut water receptacle, and incised bamboo mouth-
piece;

562—566. Five brass anklets of various patterns; and

567. A knife, with sickle-shaped blade and plain metal
handle, in a leather sheath. Jeypore;

568, 569. A steel style, and a number of prepared palm- leaf
strips;

570, 571. Two small brass vessels for *pahn*: one a circular
locket-shaped case (d. 2"-2) ; and one a cylindrical cup with
small, lateral loop (1"×6 x 1"-4);

572, 573. Two small figures in bronze : a horse and rider, and
a bird;

574. A finely moulded figure on a square base, in coloured
plaster, of a Brahman priest seated cross-legged, holding a
manuscript in his hands (h. 5");

575, 576. Two sacred emblems in brass : a thunderbolt
with openwork ends (1. 5"-3); and a -----, a ring supported
on three legs;

577. A small brass bell with ornate loop (3"×8 x 2"-7). From
a Buddhist shrine; *and*

578—580. Three rosaries: one with round, and two with oval
wooden beads. India. *Mrs Bendall*. [Nos. 534—580.]

581, 582. A Hat, scoop-shaped winnowing basket and a flag-shaped tan of plaited cane, revolving on a bamboo handle. ----- India. *Mrs J. G. Frazer.*

CEYLON.

583. A circular, locket-shaped case of hammered copper, with ornate brass mountings (d. 1"-5). *John J. Jennings, Esq.*

TIBET.

584. A square pendant (reliquary) of gilt-metal, with semi-oval projection on each side, set with roughly cut turquoises (3"1 x 3"1);

585. A plain brass finger-ring with diamond-shaped bezel set with turquoises; *and*

586. A prayer-wheel of brass, with wooden handle. *Mrs Bendall.* [Nos. 584—586.]

BURMA.

587. A small-necked copper vessel with orange-shaped body and expanding foot, decorated with an incised pattern (4"-2 x 3"-8); *and*

588. A seated Buddha, carved in wood, the figure covered with gold foil and the ornate base with silver foil (h. 7")- *Mrs Bendall.* [Nos. 587, 588.]

589. A marble figure of Buddha, seated, shewing traces of brown and gold paint (h. 18"-4). *Mrs R. A. Stitt.*

590. A large, barbed iron hook with long, looped shank and a short fibre line (l. 22"-3). Used by divers for gaffing fish in the Panlaung River; *and*

591. A cylindrical sheath for a knife (*dah*), of plaited cane (l. 15"-5). Shan States. (See No. 1111.) *Major Wheeler Cuffe.* [Nos. 590, 591.]

AFRICA

EGYPT.

601. A circular brass bowl, shewing much wear, engraved inside and out with the 'Throne verses' from the *Koran*, cabalistic sentences, and a representation of Solomon's seal, etc. Its shape is that of the ordinary Egyptian handwashing bowl minus the perforated cover (d. 6"-5). *Mrs Bendall.*

602. A Nubian sword with leather-bound cross-hilt andommel, in a red leather sheath. The broad, double-edged Solingen blade is marked with a pair of crescents on either face (l. 39"). *H.*

ABYSSINIA.

Weld-Blundell, Esq.

603. 604. Two spears, with socketed, leaf-shaped, iron heads on long barbed necks, and iron-ferruled bamboo shafts (ls. abt. 87");

605. A heavy, circular, convex shield of hide, bearing a herring-bone design (d. 20"-8);

606. A wooden saddle with iron stirrups; quilted pads; saddle covers of flowered sateen; and embroidered bridle, crupper, head-stall, etc.;

607. A leather belt faced with cloth, decorated with silver bosses and bearing chased silver plates fringed with silver pendants; *and*

608—610. An embroidered silk cap, with tassels and plaited strings; a quilted, sleeved tunic, decorated with coloured cloth; and a white merino cloth embroidered with floral designs in silk. *H. Weld-Blundell, Esq.* [Nos. 603—610.]

SUDAN.

611. A flat, curved, missile club (trombash), with taper, bent head and butt (l. 25"-2). Berta tribe; and

MALAY PENINSULA.

592, 593. Two quivers of bamboo with covers and collars of plaited cane: one finely decorated with an incised design (l. 14"-5), and almost plain, containing a number of poisoned darts (l. 14"). Sakei. *W. D. Rouse, Litt.D.*

BORNEO

594. A bamboo carrying-stick incised with five broad bands of arabesque pattern (l. 55"-3). **Professor Bevan.*

CHINA.

594. A compass (used for casting horoscopes), in a flat lacquered wooden case: both the concave face and the convex back are inscribed in black and red (d. 5"-6). F. H. H. Guillemard, M.D.

KOREA.

595. A charm against evil spirits (hung on houses), viz.: a bronze (d. 3"-9), with pendants of 'cash,' bearing on either face an elaborate pattern in relief;

596. A deep, flat-bottomed spherical jar with convex lid, ground of a green stone, and polished within and without (6"-5 x 9"-4). Obtained by the sacking of the old Royal Palace, Seoul;

597. An oblong box of white marble, with flat lid, inscribed in black on each face (5"-1 x 3"-6 x 3"-5);

598. A pair of gilt-metal harness decorations representing two crests of dragons with four-jointed bodies, and movable jaws and tongues (l. 1 1/2 and

599. A massive oblong padlock of iron, with spring bolt and fluted key-hole cap (5"-4 x 2"-5); and a key with slit stem (l. 2 1/2"). **Professor Bevan.* [Nos. 596—600.]

612. A throwing knife, with hide-covered grip, of reaping-hook form, bearing an incised pattern (l. 25"). Shangalla tribe. East Sudan. *H. Weld-Blundell, Esq.* [Nos. 611, 612.]

613. An arrow, with poisoned, barbed iron head and plain reed shaft. Chadda or Binue River. *R. Bosworth Smith, Esq.*

614—618. Five hippopotamus harpoons with barbed iron heads of various designs, attached by bands of plaited fibre to plain wooden shafts, one bearing spiral bands of brass and iron. ----- **Professor Bevan.*

DAHOMY.

619. A weapon, in form of a clasp-razor, with iron blade provided with a spring catch, and a wooden handle (l. 29"). Formerly carried by the King of Dahomey's corps of Razor women. Picked up at Abbeokuta in 1864, after an attack on that town. *The Rev. Canon Venn, M.A.*

CAMEROON.

620, 621. Two small oblong *zanzas*, with handles carved to represent human heads: one with iron, and one with bamboo keys. ? Cameroon. **Professor Bevan.*

SENEGAMBIA.

622. A single-strand necklace of moulded beads (? of a spice). Joloff. *Miss E. Brooks.*

BRITISH EAST AFRICA.

The following objects are Baganda:

623 *a—k. Kibuka*, the War God of the Baganda, consisting of: (1) four relics of the renowned fighting chief of that name (his *Mulongo* (Twin), lower jaw-bone, etc.), each encased in leather decorated with copper and glass beads, together with a goat-skin bag in which they were kept.

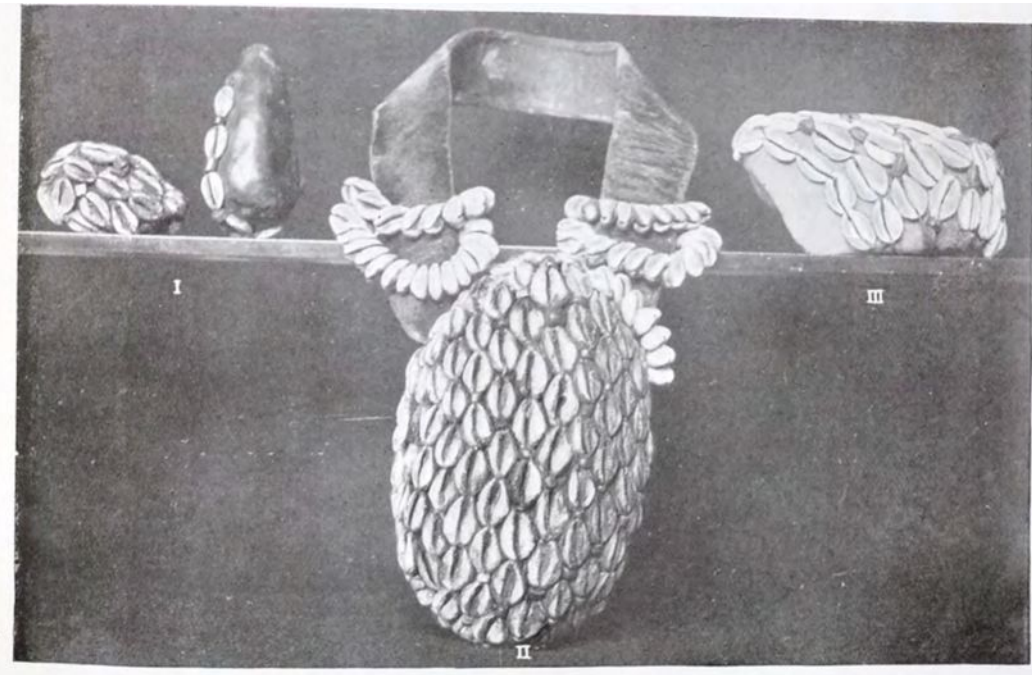


1.



2.

R. 1907, 623.



3.

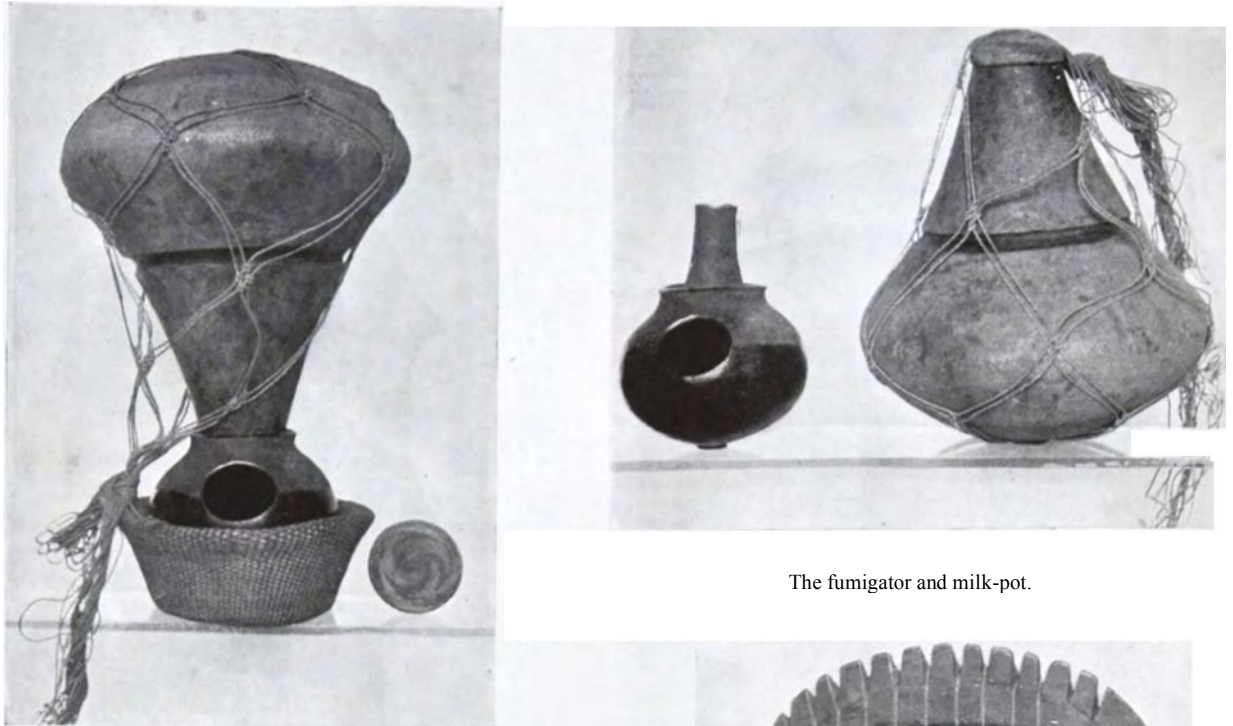
Scale approx. 1/2.

Kibuka the War God of the Baganda. Mawokota, Uganda, 1904.

- 1. The stool containing the relics, displayed with shields and bell, on the royal leopard skin.
- 2. Stool shewing basin with its bark-cloth cover.
- 3. The four relics of Kibuka.

Presented, 1907, by the Rev. John Roscoe, C.M.S.

(Reproduced from *Man*, 1907 : see *Roscoe*, No. 95.)

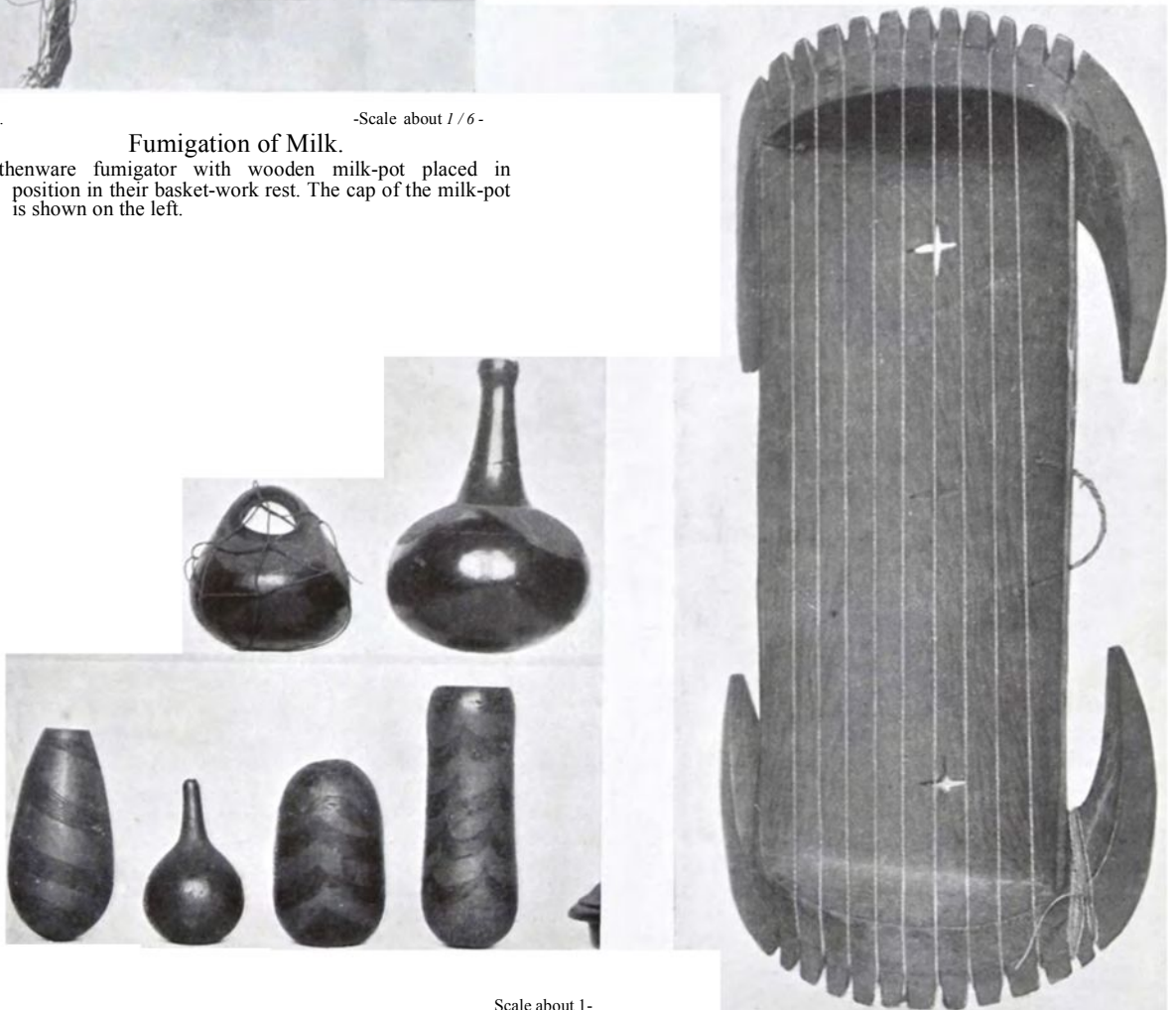


The fumigator and milk-pot.

1. -Scale about 1/6-

Fumigation of Milk.

Earthenware fumigator with wooden milk-pot placed in position in their basket-work rest. The cap of the milk-pot is shown on the left.



Scale about 1-

a, Wooden needle-case; b, Clay fumigator used by women; c, Clay bottle for milk; d, e, f, Decorated gourds; </, Long-necked gourd vessel used by women in a ceremony for the propitiation of evil spirits.

3- Scale about J.
Wooden harp played by women to their husbands.

Objects made by the Bahima, a Cow Tribe of Enkole, Uganda.

Presented, 1907, by the Rev. John Roscoe, C.M.S.

(Reproduced from *Jour. Royal Anth. Inst.* 1907 : see *Roscoe*, Vol. xxxvii, p. 93.)

(2) A wooden stool carved, with four legs springing from a circular, shield-shaped base, and a bason-shaped sent provided with a tall, inner, upright rim, forming the receptacle in which the relics were kept. This rim which is encircled by a band set with cut white cowrie shells, bears a bag-like cover of brown bark cloth (total h. 12"-5; d. rim of bason 7'0, sent 10", base 12"6);

(3) Two small models, of oval shields of decorative wicker-work, with hide-bound margins: one larger, bearing a central oval plate of wood with a pair of small bosses, has the face decorated with a marginal line and bands of cowrie shells, and to the straight, wicker-work handle, an iron bell (of sheep-bell form) is attached by a strip of bark cloth (16"-5 x 9"); and one, of diminutive size, bears a single, large, conical boss of wood, and a bow-shaped handle made of a twig (10" x 5 x 0"8);

(4) A knife, with wide, straight-edged iron blade, rounded point, and bold central rib, with incised marginal decorative lines, set in a wooden handle (l. 14"); and

(5) A leopard skin, the emblem of royalty, on which the above objects rested. From the destroyed temple (*kigwa*) of *Kibuka*, Mawokota district (see Roscoe, *Man*, 1907, So. 95) (Plate III);

624—628. Four *Balongo* or *Mulongo* (twins), charms containing portions of deceased kings: one, egg-shaped, the most ancient, provided with a broad leather strap-loop, is incased in leather covered with cut, white cowrie shells, and oid blue and yellow glass beads (7"9 x 4"-4); two, a larger and a smaller, of cylindrical form, made up of tightly rolled brown bark cloth, with long loop handles 'served' with string (6"-5 x 2"-8 and 6"11 x 2"-5; ls. (with handles) 19"5 and 16"); and one of similar form and make, but much larger, bearing a covering of glass beads, disposed in bands of red, pink, and white chevrons, and on the top and base a seven-pointed star (11"-3 x 6"-6; total l. (with handle) 33"-5); and a dummy knife, carved in wood, as though in a decorated sheath (l. 13"-3), which was kept with the last-mentioned *Balongo**; and

629. A *Lubare* (Deity)—Vessel of globular form, bearing a faint raised pattern. The central plain-rimmed orifice is surrounded by eight upstanding spouts which project from the rounded shoulders (8"-9 x 12"2). Used for giving criminals drugged beer before execution, in order to give the king power over their ghosts. Obtained from the chief *Kimbugwe*, a former keeper of the *Balongo*;

630. A small shield and stool (combined), carved out of hard wood, in the form of a pair of buffalos standing back to back. The actual seat or shield (a pointed, convex oval, with protruding, square-sided ends) is supported on two pairs of stout A-shaped tags (representing the fore-legs of the animals), connected by a three-sided strap, which forms the handle of the shield. The tips of the long horns of the large-muzzled heads merge into each other so as to produce a pendant loop round either side of the seat (17"-2 x 6"6 x 5"7). (? Ceremonial.) North Uganda;

631—634. Four wooden staffs of various forms;

635, 636. Two iron spears with heads and shafts wrought in the solid: one, with two blades set face to face, bears a circular perforation in the neck (l. 46"11);

637—642. Six socketed iron spear-heads with leaf-shaped blades of various forms; and

643—647. Five charms, viz.: four encased in leather, two crescent-shaped with single and double lateral perforations respectively, one conical, with large, central perforation, with leather loops attached, and one cylindrical (*tikirimikie*), the ends set respectively with a crystal and a tooth (for the

exorcism of evil spirits through the god *Kaumpula*); and one without its cover, a bean-shaped mass of clay, with a copper cylinder imbedded in one side. From disused temples, Uganda;

648. An amulet: a pair of cylinders, covered with n pattern in coloured glass beads. Worn by the late King of Koki;

649—651. Three charms: one (of the god *Kauli*), a perforated cylinder of wood, with a truncated and a pointed end, attached to a thong loop (for curing internal pains); one (of the god *Eisinga*), a bundle of interwoven strands of a creeper with suspension loop (weather charm used by canoe men); and one (cult of the god *Jemi Zinga*), disc-shaped, in a leather covering, with central perforation, used by thieves to protect themselves;

652, 653. Two sets of oblong dice-cards of hide, one set being provided with an oblong board of hide, used for diagnosing diseases;

654—656. Three small, bowl-shaped baskets of distinct patterns, for the offering of small fish to *Mukasa*, the god of the Lake;

657. A waist string of cowrie shells, banana seeds, and two ovals of sheet iron;

658, 659. Two long walking sticks with carved heads;

660. A slim, pointed stick, with an iron ferule (l. 89"),— an early form of spear, the ferule being a later addition;

661. A pointed-oval, convex wooden shield, with conical boss, decorated on both faces with slats and coloured strands of reed (35" x 16");

662—665. Four fishing lines of fibre twist: one a stout 'night-line' (*kilagala*), for large fish in shallow water; and three fine, with single hooks, for rod fishing;

666—679. Twelve wicker-work fish-traps: six beehive, two funnel, and four bottle-shaped; and two sets of fish-traps, composed of six conjoined conical traps, with fringes and ropes of plaited grass;

680. A circular fish-strainer, used with above (d. 14"); and

681. A small cupping-horn. -----;

682—689. Eight spears, with leaf-shaped, socketed iron heads and rough wooden shafts (ls. 69"-82"-5);

690—692. Three hide shields: two oval (45"-5 x 21' and 20" x 14"), and one oblong with ridged face, shewing a pointed and a double indented end respectively;

693. A number of penannular iron bangles, including one with rattle (also used as currency); and

694. A medicine-man's kit: a closely tied bundle of twigs, with pendants of shells, stones, etc. Mount Elgon.

Thirty-three objects of Bahima manufacture, viz.:

695. 696. Two bottle-shaped vessels with globular bodies and tall necks of black, glazed clay, bearing incised decoration, used for milk (Plate IV, fig. 3 c);

697—699. A tall, cone-shaped wooden pot enclosed in a wide-meshed string net, with rounded base and fibre cover, and a globular, straight-necked vessel of black clay with lateral oval aperture, used with the above for fumigating milk; and a high ring-stand of plaited fibre in which the fumigator is placed (Plate IV, figs. 1 and 2);

700. A small round bowl with looped handle, of black clay, bearing an incised pattern, enclosed in a network of string. Used by women for burning a scented kind of grass for fumigating their bodies (Plate IV, fig. 2 b);

701. A small, fig-shaped gourd with lateral perforation, used by women for ceremonial purposes (Plate IV, fig. 2 e);

702—704. Three small receptacles made of gourds, with burnt-in designs (Plate IV, figs. 2 d, f, g).

705. A wooden spoon-shaped butter-dish (l. 5"1);

* The first of these *Balongo* is very similar to the *Kibuka* example figured on Plate III, fig. 5.

706. A. wooden butter-measure consisting of a pair of conjoined oval bowls (3"-9 x 3"-1);

707. A cylindrical wooden case with carved pattern and black bands, for holding needles (Plate IV, fig. 2a);

708. A wooden harp with crescent-shaped ends, concave face and convex back (21"7 x 10"-4), played by women in private to accompany the love songs sung to their husbands (Plate IV, fig. 3);

709. 710. A bangle and a number of anklets made of elephant's tail hairs bound spirally with copper and iron wire respectively;

711. A waist-cord of plaited fibre, bearing coloured glass beads, worn by married women ;

712. A charm (*luzalo*) enclosed in leather, decorated with fur, shells, and glass beads, attached to a four-stranded belt of glass beads, worn by women when with child ;

713. A head-fillet with glass bead pendants (cult of the god *Wamala*), worn by priests when ascertaining the diseases of cattle;

714—720. Seven amulets : five in wood, horn, etc. covered with glass beads (gods *Wamala*, *Kyomya*, *Ndaula*, and *Nakiruru*) ; and two (god *Ibone*) consisting of a necklace of reed cylinders, and a pair of double beads made up of two cylinders of reed, both being covered with glass beads;

721—723. Three charms (god *Nambaga*): horns (two of antelopes and one of buffalo), the ends closed with small plugs of wood: the largest, also used as a medicine horn, has a central, funnel-shaped orifice of iron ;

724. An iron knife with long tang (shaped like a ?), and cylindrical wooden handle (1. 19"4); used both as an implement - and a weapon ;

723, 726. Two wooden bows ; and

727. An oblong shield with large boss and incurved ends, of wood, covered with plaited reed (13"-5 x 13"-5). *Bahima*. Enkole, Uganda Protectorate (See *Journal Anthropological Institute*, vol. xxxvii, pp. 93—118). *The Rev.*

John Roscoe, C. M. S. (Nos. 623—727.)

728—732. Five head-dresses, with foundations of matted human hair: one a fillet closely set with black seeds and white shell beads and covered with cock's hackles ; and four skullcaps, three covered with black seed beads coated with red earth, and one (imperfect) with white glass beads. *Miro*, Bukedi, Uganda. *E. B. Haddon*, B.A.

733, 734. A wooden bow, with sinew strand ; and a number of arrows with composite wooden shafts, and triangular, and leaf-

shaped iron heads;

NORTH.

776. A rough club of walrus bone, used for clubbing seals. Eskimo. *Mr W. D. Webster*.

777. A small hand-loom, shewing a mat of coloured wools in process of manufacture (17" x 17"5). *Musquakie* Indians. *Miss M. A. Owen*.

778. A painted wooden dish with oval bowl, representing a frog (14"2 x 6"-4). *Tlingit* Indians, Alaska. *J. W. L. Glaisher*, Sc.D., F.R.S.

779. A large, plain, spoon of mountain sheep horn (11"1 x 3"-7). *Norui* Indians, Alaska; and

780. 781. Two *Haida* spoons of black horn: with plain bowls fastened to curved, taper handles, elaborately carved

781. A small, round basket with flat cover and base (for trinkets), of very finely plaited bark strands, decorated

735, 736. Two cylindrical quivers: one, with cover, of hide ; and one of wood with hide cover;

737—741. Five shields: three large, oval, of hide, bearing painted designs in red and black (ls. 42" 5—50"-5); and two of wood, with wrist loops, used in dances (ls. 15" and 18"); and

742, 743. Two socketed iron ferules (ls. 6" and 10"-3).

Wakikuyu tribe, Nairobi District. *George P. Bradney*, B.A. [Nos. 733—743.]

744—751. Eight personal ornaments decorated in bead-work, viz. four head-fillets ; two aprons ; and two belts and

752—758. Seven small carvings in bone, of animals, tools, etc. Lake Nyasa District. *The Rev. Alexander G. De la Pryme*, U.M.C.A. [Nos. 744—758.]

CONGO.

759, 760. Two ivory horns with lateral perforation : one plain, with hide collar, etc. (1. 10"-9) ; and one larger, with a beaded, oblong projection (1. 14"-5); and

761. An ivory cloth-beater, stained brown (1. 12"7).

Congo;

762, 763. Two small, globular flasks of wood, with caps, decorated with fine carving. Bayauzi tribe, ? Bolobo ; and

764—767. Four small, ornate wooden vessels : one a barrel-shaped mug with bow handle, carved with a lozenge-shaped pattern and marginal bands (5"6 x 3"-5) ; one a globular cup, with wide mouth, on a beaded stem with disc foot, bearing an interlaced pattern of reeded bands (6"-8 x 3"5); and two with string loops : one beaker-shaped, roughly carved with beaded bands, etc. (6" 3x3"-7), and one bucket-shaped (narrowing from the flat base towards the mouth) bearing a band of diamond-shaped protuberances (5"7 x 4"-1). ? *Bakuba* or *Bashilele*, Kassai. **Professor*

Bevan. [Nos. 759—767.]

NATAL.

768—772. Five ornaments of coloured glass beads, worn / by women, viz.: two oblong aprons with girdles; a pair of ear-pendants; a fringe neck-ornament; and a square satchel 2o . with suspension loop; and

773. A penannular bracelet composed of ridged iron beads. (Zulu.) *Mrs R. Bosworth Smith*. [Nos. 768—773.]

774. A small whistle formed of the tip of a cow's horn.

(Zulu.) *M. J. Petty*, Esq.

775. A woman's waist-belt of coloured glass beads, with oblong tags. (Matabele.) *Mrs J. W. Clark*.

AMERICA.

in blue with two bands of fylfots. — Mr H. *Stadthagen*.

783, 784. Two 'totem-posts,' the faces boldly carved with the following symbols: a human figure with uplifted hands (at the base), a whale, a human mask, and a frog, the whole design picked out in red, green and black paint (109" x 10"-3); and an owl, a raven, a beaver, and a frog (136"5 x 21"). *Nootka* Indians, Vancouver Island. *J. W. L. Glaisher*, Sc.D., F.R.S.

785. A trophy, consisting of the skin of the left hand of a Sioux Indian, decorated with feather and cloth pendants. Fort Jarry, Red River Settlement (now Winnipeg, Manitoba). 1855. *Colonel R. T. Caldwell*, M.A., LL.M., *Master of Corpus Christi College*.

786. An ornate bowl of a tobacco pipe, of diamond section, carved in slate, and incised with the figure of a dog (2"7 x 1"-5). Powhattan, Virginia. *Major-General Sir Matthew Gosset*, K.C.B.

SOUTH.

787. A receptacle for *yerba* (native tea), in the form of a tapir, made of the hide of the upper part of a cow's foot. Paraguay; and
788. A roughly decorated *mate* gourd with white metal

mountings; and a bombilla (spoon-strainer) of white metal. Argentine Republic. M. J. Petty, Esq. [Nos 787, 788]

789. A set of reed arrows, feathered and unfeathered, with wooden heads, armed with bone, iron, and string-ray barbs. -----
*Professor Bevan.

AUSTRALIA.

790. A symbol of mourning, viz.: a cap-like object formed by successive layers of pipe-clay (*kaolin*), being plastered on the hair during the prescribed period of mourning (Weight 7 1/2 lbs.). Taken off a widow's head, *Arunta*;

791. A head-fillet, consisting of a many-strand circlet

string, dyed red. ----- ;

792. A nose-ornament: a bird's bone, having one end tipped with gum (1. 8");

793, 794. Two necklaces: one single-strand of Bean-tree (*Erythrina vespertilio*) seeds, Lee Creek; and one eight-stranded, formed of sections of a reed, with long ties of bark. Eleanor River;

795. A neck-pendant of shell and fur tassels, ----- ;

796—806. Eleven armllets; four wide, of circular or pointed oval outline, made on a wooden foundation, of bark, fibre, and human hair (two decorated with human hair pendants), Melville Island; one pair cylindrical, of twisted fibre, ; one, a band of plaited reed, coloured red, Eleanor River; and four narrow, of twisted bark on a reed foundation. -----;

807. A waist-belt of bark coloured red (width 3"-8), bearing a design in blue and white. Melville Island;

808—810. Three shoes made of matted emu feathers and human hair string, worn during a *Kurdaitcha*. *Arunta*;

811, 812. Two wooden objects resembling broad spearheads, with two-sided and one-sided barbs respectively, and pointed tangs (ls. 18"-5 and 24"6). ? Head ornaments used in dances. ? *Melville Island*;

813. An ornament, consisting of a bunch of white feathers, with long string pendants. -----;

814—816. Three small openwork string bags with loops: one containing dye-rags for staining boomerangs, etc. ----- ; and two similar, but larger. Eleanor River;

817. A small round basket of grass, with string loop. --- ;
and

818, 819. Two knives in bark sheaths, with ridged blades of quartzite set in gum handles (ls. 8"-5 and 8"-3). *Arunta*. *R. H. Marten, M.D.* [Nos. 790—819.]

820. A knife similar to the last (1. 10"-6). *Arunta*.
J. B. Andrews, Esq. "

821, 822. Two knife-scrapers (*dabba*); slim pointed sticks with a row of rough quartzite flakes set in gum; one (1.19"5), with seven teeth (two flakes cut from china telegraph insulators) ; and one (1. 19"5), with two teeth. West Australia; and

823. A double-ended axe, with pointed stick haft, consisting of two stones joined by a wide belt of gum. one provided with a sharp, the other with a blunt, square, edge (1. 12"4). . *Baron Anatole von Hugel*. [Nos. 821—823.]

824, 825. A rough stone axe, painted red and white in a withy haft (1. 8"-8). Point Keats district; and the head of a similar, but better fashioned axe (3"7 x 3"-1);

826. A fire stick; drill with stick hearth and tinder (a folded piece of bark attached to a split twig). -----;

827. A paddle, with fiat, bat-shaped blade painted red (1.48"). Port Darwin district; and

828—830. Three missiles (sticks), for killing small animals; two slim, with conical, sharply pointed heads,

covered with longitudinal grooves (one painted); and one with flat, bulbous head and grooved, taper shaft (ls. 19"-3—21"-8). Melville Island. *R. H. Marten, M.D.* [Nos. 824—830.]

831 a—g. Seven fragments of pearl-shell, shewing the various stages in the manufacture of a shell fish-hook. Queensland. *G. J. Banfilde, Esq.*

832. A spindle-shaped message-stick of wood (1. 7"1).
J. B. Andrews, Esq.

833. A replica of a message stick, with burnt-in symbols (1. 6"-5), carved by a native. West Australia. *John L. Glascock, Esq.*

834. A flat, elongate bull-roarer, painted red, with both faces carved *churinga* fashion, with the *chunba* (Great Lizard, *Varanus giganteus*) pattern, consisting of concentric ring roundels, and grooved and dotted lines (1. 11"-6). *Arunta*, (see *Verdffentl. Vblker-Museum*, Frankfurt a. M.—Pt. 1, Pl. 1, fig. 2). *It. H. Marten, M.D.*

835. A bull-roarer, similar to last, but smaller, with unfinished carving (1. 9"7). *Arunta*. *J. B. Andrews, Esq.*

Fourteen boomerangs, viz.:

836. One ' swan-neck ' form, decorated with grooves. *Arunta*.
J. B. Andrews, Esq.

837—845. Nine: one with recent burnt-in decoration, and one with convex back, broadly grooved. *Arunta*; and seven plain (? unfinished). ----- *R. H. Marten, M.D.*

846—848. Three, with one face plain, flat, the other convex, finely carved with distinctive patterns. Queensland. **Professor Bevan*.

849. One thin, sharply curved. Cairns, Queensland. *John J. Jennings, Esq.*

850—854. Five spears, with reed shafts and string bound sockets, viz.: two armed with tongue-shaped heads of quartzite, and two with leaf-shaped heads of iron. Daly River; and one with leaf-shaped head of shale. Port Darwin district. *R. H. Marten, M.D.*

855—857. Three similar to above, with heads of quartzite, shale, and wood respectively. Queensland;

858—861. Four small plain: two slim, cut out of one piece; and two stouter, composite, with reed shafts. ? South Australia; and

862—865. Four composite: one small with plain, taper point; one large, with single bone barb and one, armed with a bunch of sting-ray hones, decorated with red and white bands; and one (?Torres Straits), with three taper points armed with bone. North Queensland. *J. B. Andrews, Esq.* [855—865.]

866—870. Five: two carved out of the solid and decorated with coloured bands, with both edges of the broad, taper, heads deeply cut so as to form closely-set overlapping barbs; one slimmer, somewhat similar; and two, one stout, and one very slim, with similar barbs cut along one edge only. Melville Island; and

871, 872. Two composite, with reed shafts and flat taper heads, bearing short angular barbs along both edges. Daly River. *B. H. Marten, M.D.* [Nos. 866—872.]

873. One composite, painted, with angular barbs along one edge only. ? Melville Island; and

874, 875. Two: one cut out of the solid, with flat lanceo-

late head, painted with white bands, one face having a large wooden barb lashed to it; and one of hard wood, composite, much slimmer, but of similar make. ----- . *J. B. Andrews, Esq.* [Nos. 873—875.]

876—878. Three similar to the last (one without barb). . *R. H. Marten, M.D.*

879. One cut out of the solid, the taper head armed with a wide, tongue-shaped barb. Central Australia. *J. B. Andrews, Esq.*

880, 881. Two composite, with triple heads, each point barbed on one side only: one with larger, the other with smaller barbs. Daly River;

882. One composite, with reed shaft, armed with a pair of very long, cylindrical, taper points. Port Darwin district; *and*

883—887. Five composite, with reed shafts, the heads barbed on one edge, with from five to twenty-five barbs of varying size and form. Northern Territory. *R. H. Marten, M.D.* [Nos. 880—887.]

888, 889. Two similar to above. ? Northern Territory. *J. B. Andrews, Esq.*

890. A bundle of plain reed darts with taper wooden heads. ----- . *R. H. Marten, M.D.*

OCEANIA.

MELANESIA.

NEW GUINEA.

902. The preserved (smoked) head of a *Tugeri* woman. *H.E. Sir William MacGregor, K.C.M.G.*

903. A skull, with incised head-hunter's mark. Fly River. *B. H. Marten, M.D.*

904. The 'pig-tail' of a *Doriri*: a cylinder of hair wrapped in strips of the inner bark of the paper mulberry

(1. 45"). Hydrographer's Range. *Guy Manning, Esq.*

905. A finely ground adze of jade, mounted in a taper, wooden socket, which fits a perforation in the conical head of the cylindrical haft (1. 24"); *and*

906. A sago pounder of similar construction, with carved haft, and finely ground stone head bearing a cup-shaped depression. Humboldt's Bay, 1895. **Baron Anatole von Hugel.* [Nos. 905, 906.]

907—917. Eleven clubs with perforated water-worn pebbles, or rudely carved stone heads, on long, mostly very rough, shafts (ls. 47"-5—39"5). Romilly Sound, Papuan Gulf. *W. E. H. Duckworth, M.D., Sc.D.*

918—920. Three sword-like clubs of hard wood: two, unusually large, with broad, truncated blades, finely carved (ls. 31"-5 and 37"-3); and one light, elongate, with saw-like ^ edges, and, flat, spoon-shaped tip (1. 25"-1);

921, 922. Two ceremonial staves, carved in hard wood: . the cylindrical shafts, with knobbed ends, bear respectively, a four-sided, and a six-sided, raised, ornate band. The heads, decorated in fine openwork carving, shew a pair of conventionalised human figures set back to back, and the shaft of the larger example bears an ornate pair of wing-like projections (ls. 48"3 and 44"-5); *and*

923, 924. Two long paddles, with broad, leaf-shaped *fag.* blades with recurved scroll tips. The lower half of both faces and the handle-ends are finely carved (ls. 77"-5, 76"-2).

Trobriand. **Professor Bevan.* [Nos. 918—924.]

MATTY ISLAND (Wuwulu).

925—928. Two long weapons, armed with small, flat, beak-shaped blades of turtle-bone, pegged to plain, cylindrical, wooden hafts (ls. 70"-5 and 72"); and two short spears with one-sided, cut-in, barbs. **Professor Bevan.*

Six spear-throwers, viz.:

891. One with broad, fiat shaft, and oval handle of shell (1. 28"2). Gulf of Carpentaria. *J. B. Andrews, Esq.*

892. One thin, curved, flexible, with gum handle (1.49"). Port Darwin; *and*

893—896. Four: three of oval section with indented hand-grip, two decorated in white. Melville Island; and one (*Nulliga*), with a tassel of human hair (Waagi). *R. H. Marten, M.D.* [Nos. 802—896.]

Three clubs, viz.:

897. One with pointed, oval head, and grip carved with cone-in-cone pattern (1. 23"-3). Western Australia. *J. B. Andrews, Esq.*

898. One (*lionile*), of short, pick-axe form, with carved butt-end (1. 23"). Victoria. **Professor Bevan.*

899. One, two-handed 'sword,' straight, with cusped handle-end, bearing a painted design (1. 50" -5). ----- . *B. H. Marten, M.D.*

900. An oval shield, with convex face and strap grip, carved in the solid, bearing a rude coloured pattern (28" x 8"-5). ----- ;

901. Samples of native food, viz. : grass and Bean tree (*Erythrina vespertilio*) seeds. ----- . *R. H. Marten, M.D.* [Nos. 900, 901.]

ADMIRALTY ISLANDS.

ADMIRALTY ISLANDS.

929, 930. Two adzes, with cone-shell blades, attached by rattan collar shaped hafts, with carved butt-ends: one bears a carved, peaked head (1. **Baron Anatole von Hugel.*

BISMARCK ARCHIPELAGO.

931. A skull-mask with fringe of bleached hair. The features and b modelled in gum and are painted red and white. The back bears a hc wooden grip lashed to the lower jaw. Gazelle Halbinsel, N.P. *The Au Museum, Sydney.*

932 a—c. Three spears; one, with cassowary bone, decorated with shell beads and plait-work. Neu Pommern (New Britain); *and*

933. A palm-wood club, with elongate, truncated blade and taper haft with triangular grip encased in a woven fibre cover (43"-5 x 2"-8). Neu Mecklenburg (New Ireland). **Professor Bevan.* [Nos. 932, 933.]

934. A palm-wood spear, with incised bamboo butt. Neu Hanover. *J. B. Andrews, Esq.*

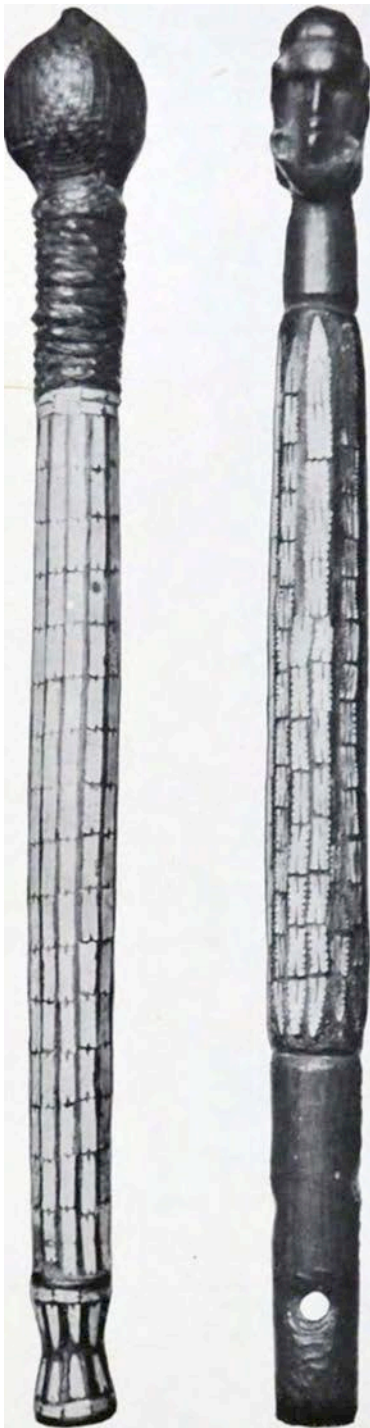
SOLOMON ISLANDS.

935, 936. Two ceremonial, chief's maces of beautiful work namely: one (15".7 x 1"-7), with globular stone head encased in orn wicker-work, has the entire, faceted, taper shaft and handle encrust variously shaped plaques of nautilus shell, *Mala* (Malaita); and one (2"0), without a head, bears a more roughly encrusted shaft, and a har carved with a pair of human heads set back to back. (See, *Hugel, --Man, 1908, 16.*) Plate V.

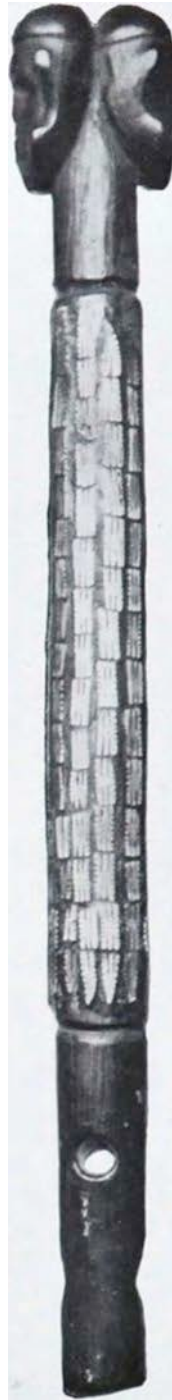
937. A battle-axe, with long, carved and shell-inlaid wooden shaft with an American iron trade axe-blade (1. 50"), Florida;

Nine clubs, viz.:

938, 939. Two long, lanceolate, with ridged faces and medial bead: one, of very fine workmanship (?croton-leaf motive), expands into a rounded, shouldered head, with a grooved edge, and has the taper, square-ended shaft, bound with yellow, criss-cross plait-work, so as to shew on either



Pl. 1908, 935.



Pl. 1908, 936.



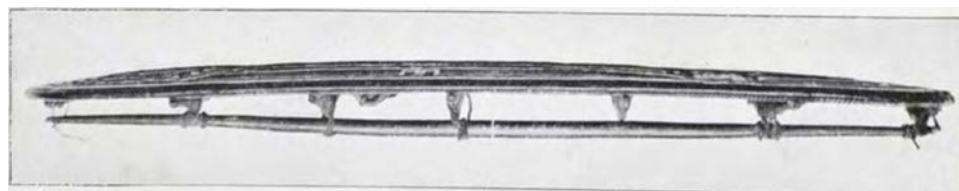
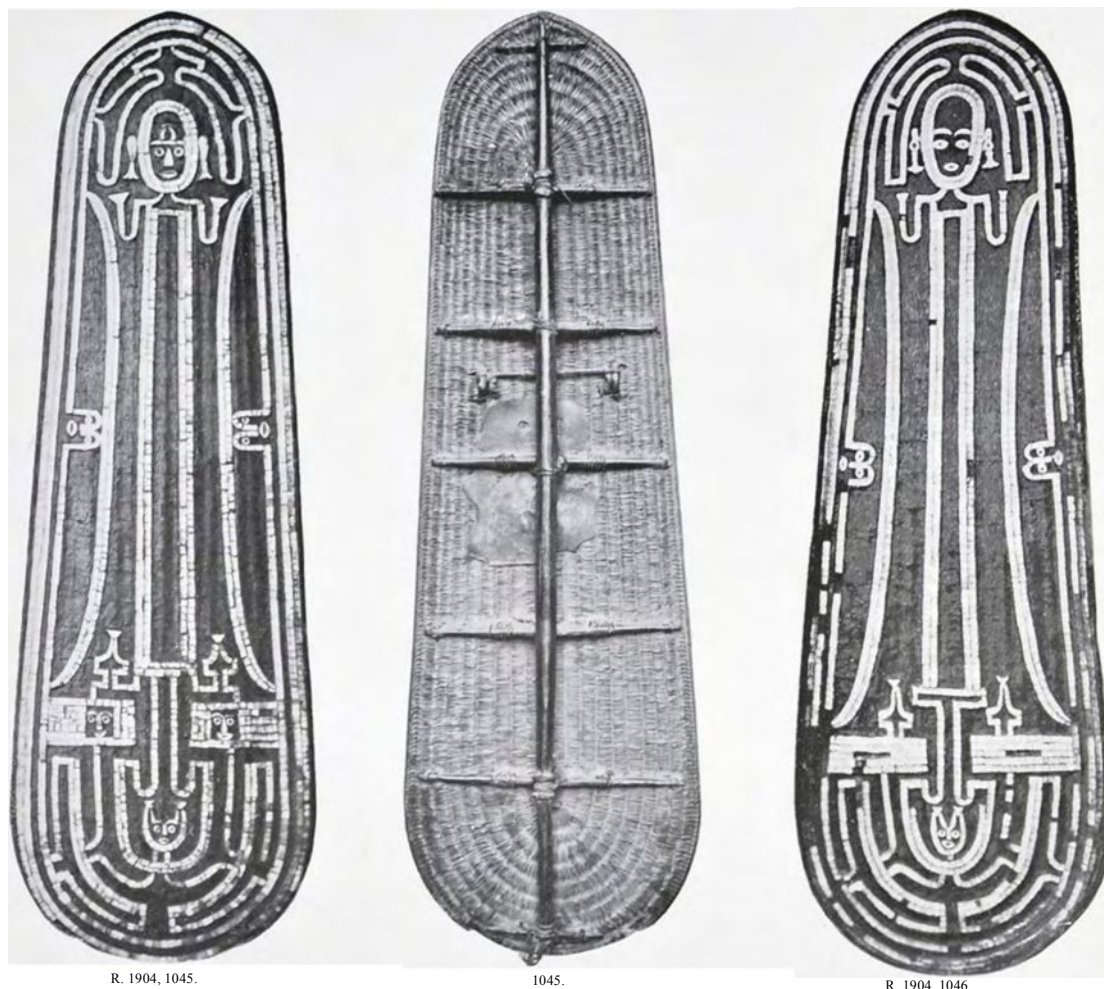
Scale about

Two decorated Maces (chiefs' insignia) from the Solomon Islands.

No. 935 from the Island of Mala (Malaita), of No. 930 exact origin not known.

Presented, 1907, by A. A. Bevan, M.A., Trinity College, Lord Almoner's Header of Arabic.

Reproduced from *Man*, 1908: see *Hugel*, No. 16.)



•Scale about f.

Two shields (of Florida make with Rubiana shell-decoration). Solomon Islands.

Presented, 1904, by A. A. Bevun, M.A., Trinity College, Lord Almoner's Header of Arabic.

(Reproduced from *Man*, 1006 : see *Hugel*, No. 21.)

face, seven diamond-shaped openings (60"x4"-6); and one with usual pointed, sharp-sided blade, but with a ridged, pointed butt-end, has the grip bound with coarse yellow plait-work (58"x8 x 3"-3).

940, 941. Two pointed sword-shaped, with sharp edges and medial bead (? fish motive); one broad, with transverse groove across blade, and flat, semi-oval pommel (28'-7 x 4"-9); and one elongate, with transverse bead and expanding (fishtail) pommel (29" 3 x 3"8); and

942,943. Two, a larger and a smaller of identical design; taper, with truncated heads of oval section and cylindrical, moulded butts. A carved band with central bead encircles the heads from which a short, beaded, beak-like ridge runs down either (ace (imperfect x 2"-8 and 42"5 x 2"-2). Mala;

944, 945. Two paddle-shaped, with pointed oval heads, and straight, pointed shafts (47"-3x5"9 and 47"x4"6). Guadalcanar;

946. One scythe-shaped, with broad, beaded blade and pointed, ferule-like butt-end (1. 50"-5). San Cristobal;

947—950. Three bows of various dimensions; and a number of arrows, with reed shafts (some incised), and plain and carved wooden heads. -----;

951. A pointed-oval, flat wicker-work shield, the ends decorated in black with a bold, interwoven pattern (36"7 x 10"8). Florida ;

952. A palm-wood comb of triangular form, decorated with coloured plait-work. Guadalcanar;

953. A pair of armllets: broad bands of pandanus leaf stained red, edged with white shell beads and porpoise teeth, and bearing central roundels of white shell and transverse strings of shell beads. -----;

954. A stout, wide armllet, with flat faces and sides, ground of *tridacna* shell (d. 4"-4). ----- . *Professor Bevan. [Nos. 935—954.]

955. A pair of red band-armllets, woven of grass, with yellow fringes. Ruviana. *The Rev. G. Brown, D.D.*

956. A dance-paddle in light wood, one face of the flat, leaf-shaped blade carved with a human mask (1. 63"5). Buka; and

957—959. Three paddles: one plain with small, rounded blade and crescent-shaped handle (48"-8 x 6"5). -----; one with broad, leaf-shaped blade, decorated with black incised bands, and tips of the Sat, crescent handle carved with human heads (49" x 5"-8); and one of unusual form, of light wood, with flat oval blade, painted in black and red with a star pattern, within a marginal band shewing a bird motive. The cross-handle is of dumb-bell form (44 2" x 7"3). Ysabel. *Professor Bevan. [Nos. 956—959.]

960. A hammer (used for cracking nuts), with pear-shaped, ground pebble-head, attached, by a plaited belt, to a springy cane shaft (1. 14"5). Ruviana. * *Baron Anatole von Hugel.*

SANTA CRUZ ISLANDS.

961. An openwork, oblong basket of palm-leaf, filled with small nuts; and

962. A plain arrow, with reed shaft and wooden head. Nitendi. *John J. Jennings, Esq.* [Nos. 961, 962.]

963. A number of poisoned arrows, with plain and carved wooden heads;

964. 965. Two necklets of pink shell; one composed of roughly squared plates; the other of ground discs, with centre and ends of black seeds and white shell discs; and

966. A ten-strand waist-belt: black shell beads threaded through eight wooden stays, forming three panels set with a double row of red shell beads, etc. *Professor Bevan. [Nos. 963-966.]

BANKS ISLANDS.

967. A ceremonial dance-costume: the tall head dress of wicker-work coated with rosin and covered with moss, is surmounted by a double, serrated, crest of pith, and has the base painted with a large pair of eyes, and fringed with plaited palm-leaf (h. 36"); and the fringe-dress consists of long, overlapping strips of pandanus leaf (1. 36"). *Mrs H. K. Pry and Miss Selwyn.*

968, 969. Two reed arrows, with barbed wooden heads. *John*

NEW HEBRIDES.

970—972. Three clubs: one cylindrical, with truncated, expanding head surmounted by a conical point, and beaded, taper grip bound with fibre braid (47"2 x 1"-7). Arag (Pentecost Is.); and one, heavy, paddle-shaped, with bat-shaped blade, the convex faces decorated with a medial bead, bent at an acute angle (44" x3"-9); and one spindle-shaped, with disc butt-end bearing a raised device (L. 39"-5). *Professor Bevan.

973—975. Three arrows (one feathered), with reed shafts, and long, pointed wooden heads: Tabunamalo, Espiritu Santo; and two plain. ?Vate; and

976. A small adze, with rough iron blade (1. 13"-2), Malekula. *John J. Jennings, Esq.* [Nos. 973—976.]

NEW CALEDONIA.

977. A short, slim spear with plain wooden head and taper shaft, bound with flying-fox wool. *Professor Bevan.

Fiji

978,979. Two horned clubs, the head of one carved with an unusual pattern of grooved bands (1. 37. 2); and

980, 981. Two bows. *The Rev. C. Taylor, D.D., Master of St John's College.* [Nos. 978—981.]
J. Jennings, Esq.

POLYNESIA.

NEW ZEALAND.

967. A *tewhatewha* of light wood, with lower end of shaft carved with a band, set with four roundels of *haliotis* shell (1. 50"-5);

988, 989. Two mats of finely woven, undyed N.Z. flax : one large, with face covered with a fringe of black string pendants (korowai), has the top bordered with a string of white shells, attached to a rope of human hair braid, with looped ends (40" x 54"), worn by women ; and one small shoulder-mat (aronui) of very fine texture, the bottom edge bearing a broad, and the sides a narrow, finely patterned band in black, brown, and red *taniko* work (24"-5 x 43"-5). *Professor Bevan. [Nos. 987—989.]

SAMOA (NAVIGATOR) ISLANDS.

982, 983. Two clubs; one paddle-shaped, with carved blade and neck (1. 43"-3); and one elongate, with ridged faces and straight sides carved with eight triangular teeth (1. 49"); and

984, 985. Two plain fly-whisks, one of horse-hair, and one of coconut fibre. *Professor Bevan. [Nos. 982-985.]
986. A wicker with wide, flat, leaf-shaped blade, and deeply scalloped edges, with a curved neck heading and chape-like handle terminal (1. 14"; blade, 54"-5x12"); and one thick, with narrow, lanceolate blade, and closely set serrations (l. 101"5; b. 45" x3"); and

992. *Tangiia* (a God: the progenitor of the Mangaian) : a doll-like figure, with cylindrical trunk, large head, and small arms and legs, entirely swathed in bands of white bark cloth, decorated with upstanding tufts of tail-feathers of the Tropic bird (1. 13"). This object was obtained in Mangaia about 1822 by the Rev. John Williams, L.M.S., whose label is attached. *J. Venn, Sc.D., F.R.S.* [Nos. 990—992.]

SOCIETY ISLANDS.

998. *Oro*, the God of War. A truncheon-shaped object, with rounded head, and straight sides tapering to the base, which is provided with a rounded wooden knob. The outer covering of closely woven, fine sinnet, shewing alternate, light and dark encircling bands, has one face decorated in relief with six longitudinal rays composed of sinnet twist, the centre being crossed X wise by two similar rays. Above these, rudely represented in similar material, are the eyes, nose and ears of a human mask (18"9 x 3"-5);

994. A pillow of bread-fruit-tree wood, with broad, square-ended, concave rest, and a pair of solid, oblong supports of similar width (9"-3 x 4"-6). (Bennet Coll.); *and*

995. A spear, cut out of hard wood, with taper cylindrical shaft, taper neck, and slim head carved with five rows of barbs, cone-in-cone fashion (butt missing). Tahiti. *'Professor Revan.* [Nos. 993—995.]

MICRONESIA.

GILBERT ISLANDS.

A set of weapons of coconut palm wood, armed with shark's teeth, viz. :

996—998. Three: two taper, with long, cylindrical shafts, the grooved edge of the beaded blades set with teeth : one (total 1. 162"; blade 78" x 2"-7) with narrow blade, provided with spindle-shaped wooden guard; and one (total 1. 107"; blade

999—1007. Nine swords: five of cylindrical section set with four rows of teeth, four (46" x 14", etc.) have double guards, and one (1. 44".5) slim and taper (neatly fashioned) without guards, has the neck of the long haft bound with hair-string and stitched leaf; one of oval section has a pair of single guards; and three: one (52"-5 x 2"-8) with large, wide taper blade set with small teeth, fastened by cross-lashings, is bound with four bands of string and pandanus leaf, and the long, rounded hilt, ends in a flat pommel (?Kingsmill); and two curved (ls. 25"-5 and 31"), have ridged and beaded faces and conical pommels; *and*

1008—1011. Four daggers with beaded faces: three with slightly curved blades, one (1. 14") with carved handle ; and one (1. 16"-7) straight, with beaded face, and sinnet-bound taper handle. **Professor Bevan.* [Nos. 996—1011.]; *and*

1012. One spear: slim, cylindrical, of coconut palm, armed on two opposite faces from the point downwards for eight feet, and for two short lengths on the other faces, with a line of small teeth, attached by transverse lashings. Three small, sickle-shaped, armed, wooden blades are lashed with shark's skin at regular intervals to the bead, so as to project point upwards beyond one of the armed sides. Kingsmill Is. *W. H. D. Rouse, Litt.D.*

CAROLINE ISLANDS.

1013—1016. Four necklets: one a triple-strand and one a composite band of brown seeds ; and one double-strand of black, and one very long, single-strand of alternate, black and white, shell discs (1. 206"). Ruk Is. **Professor Bevan.*

S
*.

1. ARCHAEOLOGY.

1017. Preliminary Notes on the Chronology of the Palaeolithic Age. By W. ALLEN STURGE, M.D. (Typewritten copy of unpublished MS.), 1905. 4to. *The Author.*

1018. The Distribution of Flint and Bronze Implements in Norfolk. By W. G. CLARKE. (S. P. Trans. Norfolk and Norwich Naturalist's Society, 1907.) 8vo. *The Author.*

1019. A Winter's Work on the Ipswich Palaeolithic Site. By NINA FRANCES LAYARD. (S. P. Jour. Auth. Inst., 1906.) 8vo. *The Author.*

1020. The Great Ford across the Lower Thames. By MONTAGU SHARPE. (S. P. Arch. Jour., 1906.) 8vo. *The Author.*

1021. Le vrai probleme des Enceintes prehistoriques, Deux mots a propos du Castelar du Mont Bastide (A.-M.) et Premiere revision de l'Inventaire des Enceintes prehistoriques du Departement du Var. Par A. GUEBHARD. (S. P. II Congres Prehistorique de France, Vannes, 1906.) Le Mans, 1907. 8vo.;

1022. Premier Essai d'Inventaire des Enceintes Prehistoriques (Castelars) du Departement du Var. Par Dr A. GUEBHARD. (S. P. Compte rendu du Premier Congres pre-historique de France. Perigueux, 1905.) 8vo.; *and*

1023. Nouvelles Recherches sur le Prehistorique dans le Sahara et dans le Haut-Pays Oranais. Par G.-B.-M. Flamand. (S. P. Revue Africaine, 1906.) 8vo. *J. E. Foster, M.A.* [Nos. 1021—1023.]

1024. The Stone Implements of South Africa. By J. P. JOHNSON. London, 1907. 4to. *Purchased.*

1025. Note upon an Implement of Palaeolithic type from the Victoria Falls, Zambesi. By H. BALFOUR, M.A. (S. P. Jour. Anth. Inst., 1906.) 8vo. *The Author.*

1026. Paleolithic Vessels of Egypt, or the Earliest Handiwork of Man. By ROBERT DE RUSTAFJAEEL. London, 1907. 8vo. *The Author.*

1027. Austreimstenen. En billedsten fra Nordfjord. AV HAAKON SCHEDELIG. (Bergens Museums Aarbog, 1907. No. 11.) 8vo. *The Author.*

1028. The Antiquities [Roman] of Alderney. By G. T. DERRICK. (S. P. Trans. Guernsey Soc. of Nat. Science, 1906.) 8vo. *The Author.*

1029. Note sur un Trisor de Deuiers Romains trouve en 1901 aux environs de Nice. Par A. GUEBHARD. (S. P. Annales Soc. des Lettres, Sciences et Arts des Alpes-Mari- times, 1904.) 8vo. *J. E. Foster, M.A.*

1030. Un Miroir decouvert a Alise. Par HERON DE VILLESFOSSE. (S. P. Pro Alesia, 1907.) 8vo. *C. A. S.*

1031. Sur Quelques Meules a Grains et un Moulin Ancien ressemblant au "Trapetum." Par M. PAUL GOBY. (S. P. Annales Soc. des Lettres, Sciences et Arts des Alpes-Mari- times, 1904.) 8vo. *J. E. Foster, M.A.*

1032. An Anglo-Saxon Cemetery in Ipswich. By NINA FRANCES LAYARD. (S. P. Archaeologia, 1907.) 4to. *The Author.*

1033. Excavations in an Anglo-Saxon Burial Ground at
for Separate Print.

- Mitcham, Surrey. By HAROLD F. BIDDER; with Notes on the Crania and Bones found there by W. L. II. DUCKWORTH, M.D., Sc.D. (S. P. Archaeologia, 1906.) 4to. *The Author*.
1034. Ship-Burial At Kiloran Bay, Colonsay, Scotland. By HAakon Schetelig. (S. P. Saga-Book: Viking Club, 1907.) 8vo. *The Author*.
1035. Picturesque Views of the Antiquities of Pola in Istria. By THOMAS ALLASON, Architect. London, 1819. Folio.; and
1036. Ruins of the Palace of the Emperor Diocletian at Spalatro in Dalmatia. By R. ADAM, F.R.S. Printed for the Author. [-----], 1764. Folio. *J. L. Smith, Esq.* [Nos. 1035, 1086.]
1037. The xith Dynasty Temple at Deir El-Bahari, Part I. By EDOUARD NAVILLE, with chapters by H. R. HALL and E. R. AYRTON. (Twenty-eighth Memoir of the Egypt Exploration Fund.) London, 1907. 4to. *By Subscription*.
1038. Anoient Khotan: detailed Report of Archaeological Explorations in Chinese Turkestan, carried out and described under the orders of H.M. Indian Government. By M. AUREL STEIN. Oxford, 1907. 2 vols. 4to. *The Secretary of State for India in Council*.
1039. The Series of English Coins, in Copper, Tin, and Bronze. By J. HENRY. London, 1879. 4to. *F. J. Sebley, Esq.*
1040. Ancient Tokens of Colchester. By ERNEST N. MASON. Colchester, 1902. 8vo. *The Author*.
2. TOPOGRAPHY AND ARCHITECTURE.
1041. The Graphic and Historical Illustrator: an Original Miscellany of Literary, Antiquarian, and Topographical Information. Edited by Edw. W. BRAYLEY, Esq., F.S.A. London, 1834. 8vo.; and
1042. Select Illustrations, Historical and Topographical, of Bedfordshire: containing Bedford, Ampthill, Houghton, Luton, and Chicksands. By the Rev. I. D. PARRY. London, 1827. 4to. *J. L. Smith, Esq.* [Nos. 1041, 1042.]
1043. Bedford and its Environs. By J. H. MATTHIASON. Bedford, 1831. 8vo. *J. E. Foster, M.A.*
1044. Biddulph Old Hall. By JOHN EGLINGTON BAILEY, F.S.A. (S. P. Manchester Literary Club, 1880.) 8vo. *G. Montagu Benton, Esq.*
1045. Indication of Houses of Historical Interest in London. Parts IV—XVI. London, [1905—1907]. 8vo.; and
1046. No. 17, Fleet Street. Loudon, [1906], 8vo. *The London County Council*. [Nos. 1045, 1046.]
1047. The Story of Allhallows Barking by the Tower. By W. K. FLEMING. [-----, ----] 8vo. *J. E. Foster, M.A.*
1048. An Historical and Architectural Description of the Priory Church of Bridlington. By the Rev. MARMADUKE PRICKETT. Cambridge, 1831. 8vo. *J. L. Smith, Esq.*
1049. An Illustration of the Monastic History and Antiquities of the Town and Abbey of St Edmund's Bury. By the Rev. RICHARD YATES, F.S.A. London, 1805. 4to.; and
1050. L'Eglise de Sainte-Radegonde a Cambridge (Angleterre). Par EDW. JOSSELYN BECK. (S. P. Revue d'Archeologie Poitevine, 1898.) 8vo. *J. E. Foster, M.A.* [Nos. 1049, 1050.]
1051. Some Early British Churches on the North Coast of Carnarvonshire. By Lady PAGET. Cambridge, 1897. 8vo. *Donald MacAlister, M.D., Principal of the University of Glasgow*.
1052. A Notice of Ely Chapel, Holborn; with some Account of Ely Palace. London, 1840. 4to. *J. E. Foster, M.A.*
1058. A Short Account of S. Gregory's Minster, Kirkdale. By the Rev. F. W. POWELL, Vicar. Leeds, 1907. 8vo. *The Rev. W. G. Searle, M. A.*
1054. Little Maplestead's Oldest Relic. By T. H. HOLDING. (S. P. Hedingham Deanery Magazine.) 4to. leaflet. *The Rev. J. F. Harvard, M.A., Vicar*.
1055. The Famous, Unique Saxon Tower of S. Margaret's Church, Marton, Lincoln. By W. P. D. STEBBING. Gainsborough, [1907]. 8vo. *J. E. Foster, M.A.*
1056. Memorials to serve for a History of the Parish of St Mary, Rotherhithe. By EDWARD JOSSELYN BECK, M.A. Cambridge, 1907. 8vo. *The Author*.
3. HISTORY AND GENEALOGY.
1057. The Origin of the English Nation. By H. MUNRO CHADWICK. Cambridge, 1907. 8vo. *The Syndics of the University Press*.
1058. A Chronicle of the Kings of England from the time of the Romans Government unto the Death of King James. By SR RICHARD BAKER K. London, 1674. Folio. *F. J. Sebley, Esq.*
1059. The Historical Collections of a Citizen of London in the fifteenth century. Edited by JAMES GARDNER;
1060. A Chronicle of England during the Reigns of the Tudors. By CHARLES WRIOTHESLEY, Windsor Herald. Edited by WILLIAM DOUGLAS HAMILTON, F.S.A. Vol. ii.; and
1061. The (Economy of the Fleete: or an Apologetical Answer of Alexander Harris. Edited by AUGUSTUS JESSOP, D. D. Camden Society's Publications. 1876—1879. 3 vols., 4to.; and
1062. Fasti Ecclesiae Anglicanae: or, an Essay towards deducing a Regular Succession of all the Principal Dignitaries in each Cathedral, Collegiate Church or Chapel (now in being) in...England and Wales. By JOHN LE NEVE, Gent. London, 1716. Folio. *J. E. Foster, M.A.* [Nos. 1059—1062.]
1063. Liber Memorandum Ecclesie de Bernewelle. Edited by JOHN WILLIS CLARK, M.A. With an Introduction by the late F. W. MAITLAND, LL.D. Cambridge, 1907. 8vo. *The Syndics of the University Press*.
1064. Athenae Oxoniensis. An Exact History of all the Writers and Bishops who have had their Education in the most ancient and famous University of Oxford from...1500... to 1690. [By Anthony A Wood, M.A.] London, 1691, 1692. 2 vols in 1. Folio. *J. E. Foster, M.A.*
1065. The Records of Southampton. By F. J. C. HEARN-SHAW, M.A., LL.M. Southampton, 1906. 8vo. *Mr S. T. Cowles*.
1066. Cambridgeshire Parish Registers. Marriages. Edited by W. P. W. PHILLIMORE, M.A., B.C.L.; C. J. B. GASKOIN, M.A.; and EVELYN YOUNG, M.A. Vol. i. London, 1907. 8vo. *C. A. S.*
1067. Calendar of Wills proved in Vice-Chancellor's Court at Cambridge, 1501—1765. Cambridge, 1907. 8vo. *The Editor, Henry Roberts, Esq.*
1068. London Marriage Licences, 1521—1869. Edited by JOSEPH FOSTER, from excerpts by the late Colonel CHESTER, D.C.L. London, 1887. 8vo. *J. E. Foster, M.A.*
1069. Sacrist Rolls of Ely. Edited by F. R. CHAPMAN, M.A. [Privately printed.] Cambridge, 1907. 2 vols. 8vo. *C. A. S.*
1070. English Surnames. Essays on Family Nomenclature. By MARK ANTHONY LOWER. 2nd edition. London, 1844. 8vo. *G. Montagu Benton, Esq.*
- 1071- A Genealogical Account of the Family of Hill, of

- Court of Hill, and Alcaston, Shropshire. By the Rev. T. LEONARD HILL. [-----] 1881. 4to. *F. J. Sebley, Esq.*
1072. Some Account of the Family of De Vere, the Earls of Oxford, and of Hedingham Castle in Essex. By the Bev. SEVERNE A. ASHHURST MAJENDIE. Castle Hedingham, [1904.] 4to. *The Author.*
1073. The Taylors Cussion. By GEORGE OWEN, Lord of Kemeys (circa 1552—1613). Being a Facsimile Reproduction of the Original MS. Issued by EMILY M. PRITCHARD. London, 1906. Folio. *S. Ruhemann, M.A.*
1074. Le Mont Saint-Michel et lea Pays Etrangers. By ETIENNE DUPONT. Brussels, 1902. 8vo. *C. A. S.*
1075. Un Seigneur Breton a la Conquete de l'Angleterre. Riwallon, Rualdus Adobed, Rualdus Dolensis. Par Etienne DUPONT. [-----, -----.] 8vo.; *and*
1076. Les Pelerinages d'Enfants Allemands au Mont Saint-Michel (XV Siecle). Le Recit de Baudry, Arch- eveque de Dol. Par ETIENNE DUPONT. Paris, 1907. 8vo. *J. E. Foster, M.A.* [Nos. 1075, 1076.]
1077. The Bones of St Edmund. By Sir ERNEST CLARKE, M.A., F.S.A. (S. P. Bury Post, 1901.) 4to. *Donald MacAlister, M.D.*
1078. The History, Civil and Commercial of the British Colonies in the West Indies. By BRYAN EDWARDS, Esq. London, 1793. 2 vols. 4to. *Baron Anatole von Hugel.*
1079. Census of India, 1901. 44 vols. Folio. *J. G. Frazer, M.A.*
4. BIOGRAPHY.
1080. Charles von Hugel, April 25, 1795—June 2, 1870. Privately Printed. Second issue. Cambridge, 1905. 8vo.;
1081. Memoir of Commodore Goodenough, R.N., C.B., C.M.G. Edited by his Widow. 3rd edition. London, 1878. 8vo.;
1082. The Life of John Hunt, Missionary to the Cannibals of Fiji. By GEORGE STRINGER ROWE. London, 1871. 8vo.;
1083. Remarkable Incidents in the Life of the Rev. Samuel Leigh, missionary to the settlers and savages of Australia and New Zealand. By the Rev. ALEXANDER STRACHAN. London, 1855. 8vo.; *and*
1084. John G. Paton, D.D., Missionary to the New Hebrides. An Autobiography. Edited by his brother, the Rev. JAMES PATON, B.A. London, 1891. 8vo. *Baron Anatole von Hugel.* [Nos. 1080—1084.]
1085. Life of Roger Williams. By ROMEO ELTON, D.D. London [1852], 8vo. *F. J. Sebley, Esq.*
5. GUIDE BOOKS.
1086. British Association, Cambridge. 1904: Ten guides for the Excursion on 20th August. Cambridge. 8vo. *Donald MacAlister, M.D.*
1087. The Hand-book to the Fenland. By S. H. MILLER. London, [1890]. 8vo.; *and*
1088. Colchester. [1907.] 8vo. *J. E. Foster, M.A.* [Nos. 1087, 1088.]
1089. Huntingdon Town: Historical Associations illustrated by Pen and Camera. By E. GALWAY. [1899.] 8vo. *Donald MacAlister, M.D.*
1090. Thetford: an Historical and Descriptive sketch of the town. 1897. 8vo. *C. A. S.*
1091. Wisbech and Neighbourhood. By F. J. GARDINER. [n. d.] 8vo. *J. E. Foster, M.A.*
1092. Le Puy-de-Dome et Vichy. Guide du Touriste, du Naturaliste et de l'Archeologue. By M. BOULE, PH. GLANGEAUD, G. ROUCHON and A. VERNIERE. Paris, 1901. 8vo. *Baron Anatole von Hugel.*
1093. Carthage autrefois Carthage aujourd'hui. By P. A. VELLARD. Lille, 1896. 8vo. *Donald MacAlister, M.D.*
- 1094—1099. Six guides: Die Thermen, Trier; Daun; Kyllburg; Audernach; Abtei Himmerod; and Rheinbrohl. 1900—1907. 6 vols. 8vo. *J. E. Foster, M.A.*
6. ETHNOLOGY, &c.
1100. Questions on the Customs, Beliefs, and Languages of Savages. By J. G. FRAZER. Cambridge, 1907. 8vo. *The Author.*
1101. The Living races of Mankind. By Eminent Specialists. London, [1905—1906]. 2 vols. 4to. *Baron Anatole von Hugel.*
1102. Woman's share in Primitive Culture. By Otis TUFTON MASON, A.M., Ph.D. London, 1895. 8vo. *Baroness Anatole von Hugel.*
1103. The Fire-piston. By HENRY BALFOUR, M.A. (S. P. Anthropological Essays presented to Edward Burnett Tylor, 1907.) 8vo.; *and*
1104. The Friction-Drum. By HENRY BALFOUR, M.A. (S. P. Jour. Royal Anth. Inst., 1907.) 8vo. *The Author.* [Nos. 1103, 1104.]
1105. Prolegomena to the Study of Greek Religion. By JANE ELLEN HARRISON. Cambridge, 1903. 8vo. *The Author.*
1106. Russian and Bulgarian Folk-Lore Stories. Translated by W. W. STRICKLAND, B.A. Loudon, 1907. 8vo. *The Translator.*
1107. 1108. Ethnographic Survey of India: Anthropometric Data. 1, Burma, 2, Bombay. Calcutta, 1906, 1907. 2 vols. 8vo. *J. G. Frazer, M.A.*
1109. The Decorative Art of the Amur Tribes. By BERTHOLD LAUFER. (Jesup North Pacific Expedition, Memoires American Mus. Nat. Hist., Vol. vii, Pt. I.) [New York], 1902. 4to. *F. H. H. Guillemard, 31.D.*
1110. Religion and Customs of the Uraons. By the late Rev. P. DEHON, S.J. (S. P. Memoirs Asiatic Soc. of Bengal, Vol. i.) Calcutta, 1906. 4to. *The Council of the Asiatic Society of Bengal.*
1111. Life in Upper Burma. Unique way of Fishing in the Panlaung River, Shan States, Burma. By Major WHEELER CUFFE. (Typewritten MS.) 4to. *The Author.*
1112. Verslag nopens de Pasar-Gambir ophouden op het Koningsplein te Weltevreden [Java], 1906. [By L. KREISCHER.] Batavia, 1907. 4to. *Dr J. D. E. Schmeltz.*
1113. Materials for a Study of Tatu in Borneo. By CHARLES HOSE, Sc.D., and R. SHELFORD, M.A. (S. P. Jour. Anth. Inst., 1906.) 8vo. *The Authors.*
1114. Die Nigritier. Eine Anthropologisch-Ethnologische Monographic. Von Dr ROBERT HARTMANN. Part I (all published). Berlin, 1876. 8vo.; *and*
1115. Die Eingeborenen Siid-Afrika's Ethnographisch und Anatomisch. Von GUSTAV FRITSCH. Breslau, 1872. 2 vols., 8vo and 4to. * *Baron Anatole von Hugel.* [Nos. 1114, 1115.]
1116. TheBahima: a Cow tribe of Enkole in the Uganda Protectorate. By Rev. J. ROSCOE. (S. P. Jour. Royal Anth. Inst., 1907.) 8vo. *The Author.*
1117. Indianertypen aus dem Amazonasgebiet, nach eigenen aufnahmen wahrend seiner Reise in Brasilien. Von Dr THEODOR KOCH-GRUXBERO. Berlin [1906 and 1907]. Parts 1 and 2. Folio. * *Baron Anatole von Hugel.*
1118. Sudamerikanische Felszeichnungen. Von Dr THEODOR KOCH-GRUNBERG. Berlin, 1907. 8vo. *The Publisher, Herr Ernst Wasmuth.*
1119. Haida Portrait Mask. By HENRY BALFOUR, M.A. (S. P. Man, 1907.) 8vo. *The Author.*
1120. Kinship Organisations and Group Marriage in

Australia. By Northcote W. THOMAS, M.A. Cambridge, 1906. 8vo. *The Syndics of the University Trees*.

1121. On some Customs of the Aborigines of the River Darling, New South Wales. By FREDERIC BONNET. (8. P. Jour. Anth. Inst., 1888.) 8vo. *The Author*.

1122. Native Words, and Notes on the Natives of the Laverton District, Mount Margaret Goldfield, Western Australia. Collected in 1904—1906 by John L. GLASCOCK. (Original MS.) *The Author*.

1123. Reports of the Cambridge Anthropological Expedition to Torres Straits. Linguistics. By SIDNEY H. RAY. Vol. tit. Cambridge. 1907. 4to. *The Syndics of the University Trees*.

1124. Dreissig Jahre in der Sudsoe. Von R. PARKINSON. Stuttgart. 1907. 8vo; and

1125. Les Polynesiens, leur Origine, leurs Migrations, leur Langage. Par le Dr A. LESSON. Ouvrage redige d'apres le Manuscrit de l'Auteur par Ludovic Martinet. Paris, 1880—1884. 4 vols. 8vo. **Baron Anatole von Hugel*.

[Nos. 1124, 1125.]

1126. The Burial [native rites] of Thakombau [King of Fiji]. By the Rev. LOHIMEE FISON, D.D. (S. P., A. M. Missionary Review, 1908.) 8vo. *The Rev. G. Brown, D.D.*

7. TRAVELS AND GEOGRAPHY.

1127. Lapponia id est Regionis Lapponum et Gentis Nova et Verissima Descriptio. [JOHANN SCHEFFER.] Frankfurt, 1673. 4to;

1128. A Journey into Siberia, made by order of the King of France. By M. L'ABBE CHAPPE D'ACTEROCHE. London, 1770. 4to; and

1129. The Pedestrian: A Summer's Ramble in the Tyrol. By CHARLES JOSEPH LATROBE. London, 1832. 8vo. *Baron Anatole von Hugel*. [Nos. 1127—1129.]

1130. Sketch of the Present State of the Island of Sardinia. By Captain WILLIAM HENRY SMYTH, R.N. London, 1828. 8vo. *G. Montagu Benton, Esq.*

1131. Colonies Francaises. Par CH. BROSSARD. Paris, 1906. 8vo. *Mrs Houghton Graves*.

1132. The Pamirs and the Source of the Oxus. By the Right Hon. GEORGE N. CURZON, M.P. London, [1896]. 8vo; and

1133. Account of a Voyage of Discovery to the West Coast of Corea and the Great Loo-Choo Island. By Captain BASIL HALL. London, 1818. 4to. *Baron Anatole von Hugel*. [Nos. 1132, 1133.]

1134. Africa and its Exploration as told by its Explorers. London [n.d.]. 2 vols. 8vo.;

1135. Travels in Southern Africa, in the Years 1803, 1804, 1805, and 1806. By HENRY LICHTENSTEIN. Translated by ANNE PLUMPTRE. London, 1812, 1815. 2 vols. 4to. ;

1136. Report of the Exploring Expedition to the Rocky Mountains in the year 1842. By Brevet Captain J. C. FREMONT. Washington, 1845. 8vo.; and

1137. Wanderings in South America. By CHARLES WATERTON, Esq. London, 1825. 4to. *Baroness Anatole von Hugel*. [Nos. 1134—1137.]

1138. Trinidad: Historical and Descriptive. By Rev. W. H. GAMBLE. London, 1866. 8vo. *F. J. Sebley, Esq.*

1139. In the Australian Bush and on the Coast of the Coral Sea. By Richard SEMON. London, 1899. 8vo. *Purchased*.

1140. British New Guinea. By J. P. THOMSON. London, 1892. 8vo. *Baron Anatole von Hugel*.

8. WORKS OF REFERENCE.

1141. Hall Marks on Gold and Silver Plate. By WILLIAM Chaffers, 8th edition, London, 1896. 8vo. *Purchased*.

1142. Index of Archaeological Papers 1665—1900. Edited by GEORGE LAURENCE GOMME. London. 1907. 8vo.; and

1143. The Cambridge University Calendar, 1906—1907. Cambridge. 8vo. C.A.S. [Nos. 1142, 1143.]

1144. Register of S. Catharine's College, Cambridge. Compiled by the Rev. W. T. SOUTHWARD, M.A., Mus.B.; C. J. LAY, M.A.; F. M. RUSHMORE, M.A. Cambridge, 1907. 8vo. ; and

1145. The Book of Dignities. By the late JOSEPH Haydn. Continued to the Present time by Horace Ockerby. 3rd edition. London, 1894. 8vo. *J. E. Foster, M.A.* [Nos. 1144, 1145.]

1146. Who's Who, 1907. London. 8vo. *Purchased*.

1147. French and English Dictionary. Revised by JAMES BOIELLE. London, 1906. 8vo. *Baron Anatole von Hugel*.

9. CATALOGUES, A-c.

1148. British Museum: A Guide to the Mediaeval Room and to the specimens of mediaeval and later date in the Gold Ornament Room. 1907. 8vo. *Purchased*.

1149. Horniman Museum : From Stone to Steel, a Handbook to the cases illustrating the Ages of Stone, Bronze, and Iron. [By H. S. HARRISON, D.Sc.] London, 1906. 8vo. *The Author*.

1150. Colchester: Catalogue of the Private Museum of Anglo-Roman Antiquities collected by Mr George Joslin. [Now in the Colchester Museum.] By JOHN EDWARD PRICE. 1888. 8vo. *The Curator*.

1151. Dorchester: Guide to the County Museum. 1906. 8vo.; and

1152. Perth: Illustrated Handbook to the Perthshire Natural History Museum. By Alex. M. RODGER. 1906. 8vo. *Baron Anatole von Hugel*. [Nos. 1151, 1152.]

1153. Paris: Catalogue et Description des Objets d'Art. Musee des Thermes et de L'Hotel de Cluny. Par E. du SOMMERARD. Paris, 1883. 8vo.; and

1154. 1155. Saint-Germain: (1) Guide Illustre, and (2) Catalogue Sommaire du Musee des Antiquites Nationales. Par SALOMON REINACH. Paris [n.d.]. 2 vols. 8vo. *Mrs Houghton Graves*. [Nos. 1153—1155.]

1156. Trier: Illustrierter Fuhrer durch das Provinzial-museum. Von Prof. Dr FELIX HETTNER. Trier, 1903. 8vo. *J. E. Foster, M.A.*

1157. Collection Prehistorique du Dr Allen Sturge. Catalogue Descriptif des Objets Exposes. Nice, 1906. 8vo. *W. Allen Sturge, M.D.*

1158. Descriptive Catalogue with Illustrated Supplement of the Reproductions of Irish Antique Art Metal Work as manufactured by Edmond Johnson, Ltd. of Dublin. Dublin, [1901]. 8vo. *Messrs Johnson*.

10. MUSEUM PUBLICATIONS.

1159. Frankfurt am Main: Veroffentlichungen des Stadtischen Volker-Museums. Die Aranda- und Loritja-Stamme in Zentral-Australien. Von C. STREHLOW. Frankfurt am Main, 1907. 4to. *The Director*.

1160. Leipzig: Stadtisches Museum fur Volkerkunde Jahrbuch, 1906. Vol. I. Leipzig, 1907. 8vo. *The Director*.

1161. Bergens Museums: Aarvog, 1906. No. 14. Af Haakon Schetelig og A. W. Brogger. 8vo. *Herr Haakon Schetelig*.

1162. Madras Government Museum: Anthropology.

(Bulletin, Vol. v, No. 3.) Madras, 1907. 8vo. *Transferred from the Fitzwilliam Museum.*

1163. Washington: United States National Museum (Smithsonian Institution): Proceedings for 1887, 1888. Vols. x and xi. Washington, 1888, 1889. 8vo. *Transferred from the Museum of Zoology.*

1164—1167. California University: Shoshonean Dialects of California; Indian Myths of South Central California; The Washo Language of East Central California and Nevada; and The Religion of the Indians of California. By A. L. KROEBER. (Publications in American Archaeology and Ethnology, Vol. iv, Nos. 8—6.) Berkeley, 1907. 8vo. *The University.*

11. REPORTS.

1168. Brighton: Public Library, Museums, and Art Galleries. Annual Report for 1906. 8vo. *The Curator.*

1169. Cardiff: The Welsh Museum of Natural History, Arts and Antiquities. Annual Report for year ending March 31st, 1907. 8vo. *The Museum Committee.*

1170. Colchester: Corporation Museum. Annual Report for the year ending 31st March, 1907. 8vo. *The Curator.*

1171. London: Horniman Museum and Library. Fifth Annual Report, 1906. 8vo. *The London County Council.*

1172. Maidstone: Museum, Public Library, and Bantley Art Gallery. Annual Report for 1906. 8vo. *The Curator.*

1173. Manchester: The Museum, Owens College. Report 1906—1907. 8vo. *The Director.*

1174. Norwich: Castle Museum. The Report of the Committee to the Town Council, 1906. 8vo. *The Curator.*

1175. Warrington: Municipal Museum. Report, 1906—1907. 8vo. *The Museum Committee.*

1176. Leiden: Rijks Ethnographisch Museum. Verslag van den Directeur over het tijdvak van 1 Oct. 1905 tot 30 Sept. 1906. 'Sgraveuhage, 8vo. *The Director.*

1177. Stettin: Gesellschaft für Völker- und Erdkunde. Bericht über das Vereinsjahr 1905—1906. 8vo. *Dr G. Buschan.*

1178. Calcutta: Indian Museum. Industrial Section. Annual Report, 1906—1907. 8vo. *The Superintendent.*

1179. Smithsonian Institution: Twenty-fourth Annual Report of the Bureau of American Ethnology, 1902—1903. By W. H. HOLMES, Chief. Washington, 1907. 8vo. *C. A. S.*

1180. Palestine Exploration Fund. Annual Report for 1906. London, 8vo. *The Fund.*

1181. 1182. Egypt Exploration Fund: (1) Report, 1905—1906. 8vo.; and (2) Archaeological Report 1906—1907. Edited by F. LI. GRIFFITH, M.A. 4to. *The Committee.*

1183. British New Guinea: Annual Report for the year ending 30th June, 1906. Folio. *The Colonial Secretary.*

1184. London: Exhibition of the Works of Industry of All Nations, 1851. Reports by the Juries. London, 1852. 8vo. *F. J. Sebley. Esq.*

V. PHOTOGRAPHS, PRINTS, AND DRAWINGS.

1294. One hundred portraits (drawings, prints, and photographs), of distinguished men and women connected with the University, Town, and County of Cambridge. *The Portrait Committee of the Cambridge Antiquarian Society.*

Twenty-one photographs, viz.:

1295. Two, 3"-4 x 1"-5, of an iron sword of the Viking age, found at Hauxton, Cambridge, 1907. *L. J. Wills, B.A.*

1296. Eight, 3" x 4", of 'Samian' ware vessels preserved in the Museum at Trier. *The Director.*

12. SERIAL PUBLICATIONS.

1185. The Museums Journal. London, 1907. 8vo. *Purchased.*

ANTIQUARIAN, AC.

1186. The Antiquary. London, 1907. 4to.; and

1187. The Reliquary and Illustrated Archaeologist. London, 1907. 8vo. *C. A. S.* [Nos. 1186, 1187.]

1188. The Indian Antiquary, a Journal of Oriental Research. Edited by Sir RICHARD CARNAC TEMPLE, Bart., C. I.E. Bombay, 1907. 4to. *The Editor.*

1189. The East Anglian, or Notes and Queries. London, 1907. 8vo.;

1190. Fenland Notes and Queries. London, 1907. 8vo.;

1191. The Publications of the Cambridge Antiquarian Society for the year 1907; and

1192—1281. The Publications of 90 Societies (46 British, and 44 Foreign) received in exchange by the Cambridge Antiquarian Society, during the year 1907, as recorded in the Society's Annual Report. *C. A. S.* [Nos. 1189—1281.]

1282. Proceedings of the Dorset Natural History and Antiquarian Field Club. Edited by MORTON G. STUART. Vol. in. Dorchester, 1891. 8vo. *J. E. Foster, M.A.*

1283. The Ely Diocesan Remembrancer. Cambridge 1907. 8vo. *C. A. S.*

FOLK-LORE.

1284. Folk-Lore. London, 1907. 8vo. *C. A. S.*

Anthropological, &c.

1285. Internationales Archiv für Ethnographie. Leiden, 1907. 4to. *Purchased.*

1286. Anthropos. Ephemeris Internationalis Ethnologiae et Linguistica. Salzburg, 1907. 8vo.;

1287. 1288. The Anthropological Institute of Great Britain and Ireland: (1) Journal; and (2) Man. London, 1907. 8vo.; and

1289. Zeitschrift für Ethnologie. Berlin, 1907. 8vo. *Baron Anatole von Hugel.* [Nos. 1286—1289.]

1290. Centralblatt für Anthropologie. Braunschweig, 1907. 8vo. *Purchased.*

1291. The Hakluyt Society. Second Series. Vols. i—xxii. London, 1899—1907. 8vo. **Baron Anatole von Hugel.*

1292. Transactions and Proceedings of the Japan Society, London. Vols. i—vi; Vol. vii, parts 1 and 2; and Supplement, I.—Nihongi. London, 1894—1907. 7 vols. 8vo.

Donald MacAlister, M.D., Principal of the University of Glasgow.

GEOGRAPHICAL.

1293. The Royal Geographical Society: The Geographical Journal. London, 1907. 8vo. *Baron Anatole von Hugel.*

1297. One, 4"-5x6"-5, of three tri-lobed bronze fibula in the Christiania Museum. *Prof. Dr Gustafson.*

1298. Four, 7" x 5", of a statuette in "faience emaillee," supposed to represent Marguerite de Valois, wife of Henri IV. In the possession of the donor *Mrs E. B. Mason.*

1299. One, 9"x6"5, of an inscribed clunch column, found in the brick-work lining of a well in King's Lane, Cambridge, 1907. *Professor Hughes, F.R.S.*

1300. Two, 6" x 4"-5, of a 13th century stone coffin, discovered at Thetford, Norfolk, July 1907. *C.A.S.*

1301. One, 3"-5 x 2"-5, of (he interior of the Brewery Chapel, Halstead, Essex. Taken by the donor *Edgar T. Adams, Esq.*
1302. One, 5" '5 x 4", of the head of a colossal figure, in bronze, of Buddha (preserved in the Museum). Taken by the donor *Mr Edward S. Ball.*
1308. One, 9" x 6"-5, of the statue of Nefretary, Queen of Ramses II. Luxor, Egypt. *Mrs Haughton Graves.*
1304. A tracing, 27" x 19", of a fourteenth century wall-painting representing the 'Incredulity of S. Thomas,' in Lolworth Church, Cambridgeshire. (*See Proc. Camb. Ant. Soc. Vol. XII.) G. Montagu Benton, Esq.*
1305. Twenty-six view-postcards: seventeen of Devonshire rood-screens; and nine of Cornish crosses. *J. E. Foster, M.A.*
1306. A series of thirty-one views, 9"-3 x 11"-3, mounted, of McGill University, Montreal, Canada. By W. Gourlie Blackie. *Donald MacAlister. M.D.*
- Two hundred and twenty-six photographs, viz.:
1307. Forty-two (postcards): nineteen of architectural, and twenty-three of ethnographical interest; and
1308. Three photographs from drawings, 2" x 3"-5, depicting the obsolete, country costume. Puy-de-D6me District; *and*
1309. Thirty, 3" x 5"-5, illustrative of peasant life at Banieres, Pontgibaud, Puy-de-Dome, taken by the donor *Baron Anatole von Hugel.* [Nos. 1307—1309.]
1310. Twenty-four (coloured postcards) illustrative of Jewish life. Dresden. *Professor Ferguson.*
1311. Ten, 4" x 3" and 5"-5 x 3"-5 : nine of the natives; and one of a spirit house. Upper Nigeria. *S. McGregor Grier, B.A., Assistant Resident, Northern Nigeria.*
1312. Forty-nine; fifteen, 3"x4—4"x6"-5, of natives of the Upper Nile; and thirty-four (postcards) of natives of Madagascar, of New Caledonia, and of Pondicherry. *Mrs Haughton Graves.*
1818. Three, 11"-5 x 8"-5—4" x 6", of Andamanese at Port Blair, two shewing the mode of carrying the bow. *E. H. Man, Esq.*
1314. Seven; six, 3" x 3"—5" x 7", of natives of Central Australia; and one, 4"-5 x 6"-5, of a group of natives dressed for a corroboree. Port Darwin District, Australia, 1905. *R. H. Marten, M.D.*
1815. One, 11".5 x 9"-5, of a native woman in mourning. Momba, near Wilcannia, River Darling, New South Wales. Taken (about 1878) by the donor *Frederic Bonney, Esq.*
1316. Twenty-two, 8" x 2"-5—5" x 4", of natives of Papua (late British New Guinea), with a sketch map. Taken by the donor *G. O. Manning, Esq.*
1317. Twenty-seven, 7"x5", of natives of Brazil. *Prof. Dr Karl von den Steinen.*
1318. One, 11" x 9", of the donor's collection of bronze, wood, and ivory objects, taken by him at the capture of Benin City, February, 1897. *Rear-Admiral George le Clerc Egerton, C.B.*
1319. Six, 3"x3"-5—4"x6", of carved Maori boxes, preserved in the Museum of St Augustine's Priory, Ramsgate. *The Rev. Dom. Feasey, O.S.B.*
1320. One, 6" x 8", of a *Musquakie* needle-case and quill needles (Owen collection). *H. A. Chapman, M.A.*
1321. A Few Pictures [forty-seven illustrations of native life] from Chhattisgarh and the Central Provinces of India. By J. J. Lohr, 1899. 8vo. *Mrs Bendall.*
1322. Twenty-seven lantern slides, viz.: (1) Fifteen of the Church and Parish of Ickleton, Cambridgeshire: (2) Nine of the Church of Lolworth, Cambridgeshire, and (3) Three of 13th century stone coffins found at Thetford, Norfolk, in 1907 and 1908. *C.A.S.*

VI. MAPS.

1323. A detailed plan, 45".5 x 35".5, of the King's Enclosure, Kampala, Uganda. Drawn by the donor Sir Apolo Kagwa, K.C.M.G.
1324. Hertfordshire Maps: a Descriptive Catalogue of the Maps of the County, 1579 – 1900. By Herbert George Fordham. [Privately printed.] Hertford, 1907. 4to. C. A. S.
1325. Notes sur la Cartographie des Provinces Anglaises et Francaises des seizeime at dix-septieme siecles. By

- Herbert George Fordham. (Congres de Gand, 1907.) 8vo. The Author.
1326. Cary's New and Correct English Atlas: being a New Set of County Maps from Actual Surveys. London, 1793. 4to. F. J. Sebley, Esq.
1327. A General Atlas. From Original Drawings by J. Wyld. Edinburgh, 1819. Folio. Baroness Anatole von Hugel.

2. List of Objects received on Deposit from January 1 to December 31, 1907.

1. A cap of black silk trimmed with black fur; and a sleeveless tunic of black stuff, trimmed with red. Pekin, 1900. *Lieutenant H. B. Cheyne, 1st Cavalry, I. A.*
2. A large, finely modelled food-bowl, of blackened wood inlaid with trochus and nautilus shell plaques, of the frigate- bird and dolphin type: the bird being shewn with outspread wings, resting on a flat, fish-shaped base (75"-5 x 25" 7 x 22"-5).
3. The stern-piece of a small war canoe: an oblong plank, the top of either blackened face, carved in openwork, bears a human bust, the large face of which is set with nautilus shell eyes (28" x 5" 7). Gatukai;
4. 5. Two paddles with bat-shaped blades and crescent handles, the horns of one terminating in human masks ls. 54"-6 and 55"-2). — ; *and*
6. An oblong shield of reeds, bound with transverse cane strips and lashing, with wicker-work, loop handle (34".8x8".9). Choiseul, Solomon Islands; *and*
7. A painted, canoe-shaped club bearing a fibre fringe and bunches of seed rattles (1. 31"-5). Santa Cruz Islands. *F. J. Wootton Isaacson, M.A., LL.M.* [Nos. 2—7.)
8. A straight club (with keeled shaft of oval section, expanding towards the pointed, conical head) covered with elaborate carving, including human and animal figures (1. 35"-5); *and*
- 9—11. Three bows, one, the longest (1. 79"-5), bearing carved ends. Tonga. **Baron Anatole von Hugel.* [Nos. 8—11.)

MUSEUM OF ARCHAEOLOGY AND OF ETHNOLOGY, CAMBRIDGE

PUBLICATIONS

ANNUAL REPORTS OF THE ANTIQUARIAN COMMITTEE TO THE SENATE,
with Lists of Accessions and Deposits. 4to.

Separate Prints from the University Reporter, 1885—1906:

I and II (*out of print*)-, III to VI 3d. *each*-, VII—VIII, *with supplement*, 6d.; IX to XIII 3c/. *each*; XIV to XVII, *with supplements*, 6d. *each*; XVIII to XXII 3d. *each*. The set 5s.

Illustrated Museum Issue:

XXIII (*with six Plates*) 1s.

CATALOGUES (separate prints from the above):

The Walter K. Foster Bequest: Antiquities. 4to. 1891. 1s.

The Skeat Ethnological Collection from the Malay Peninsula. 4to. 1899. 6d.

The Murray Collection of Irish Antiquities. 4to. 1901. 3d.

The Starr Collection of Mexican Folk-Lore (*Precis*). 4to. 1901. 3d.

The Temple Collection of the Manufactures of the Andaman Islanders. 4to. 1902. 6d.

The Man Collection of the Manufactures of the Nicobar Islanders. 4to. 1902. 6d.

Catalogue of the Archaeological Collections. Roman Pottery : I. Local Collection (Preliminary issue). 1892. 4to, with nine plates. *Out of print*.

In preparation.

BY THE CURATOR.

A Catalogue of the local collection of Roman Pottery. Revised and enlarged edition 4to, with 15 plates.

Na Kai Viti or The Islanders of Fiji. 4to, Illustrated.

*** *To be issued in parts as soon as a sufficient number of subscribers has been secured to defray the costs of publication.*