

University of Cambridge

MUSEUM OF ARCHAEOLOGY AND OF ETHNOLOGY

THIRTIETH ANNUAL REPORT

OF THE

ANTIQUARIAN COMMITTEE

TO THE

SENATE

WITH

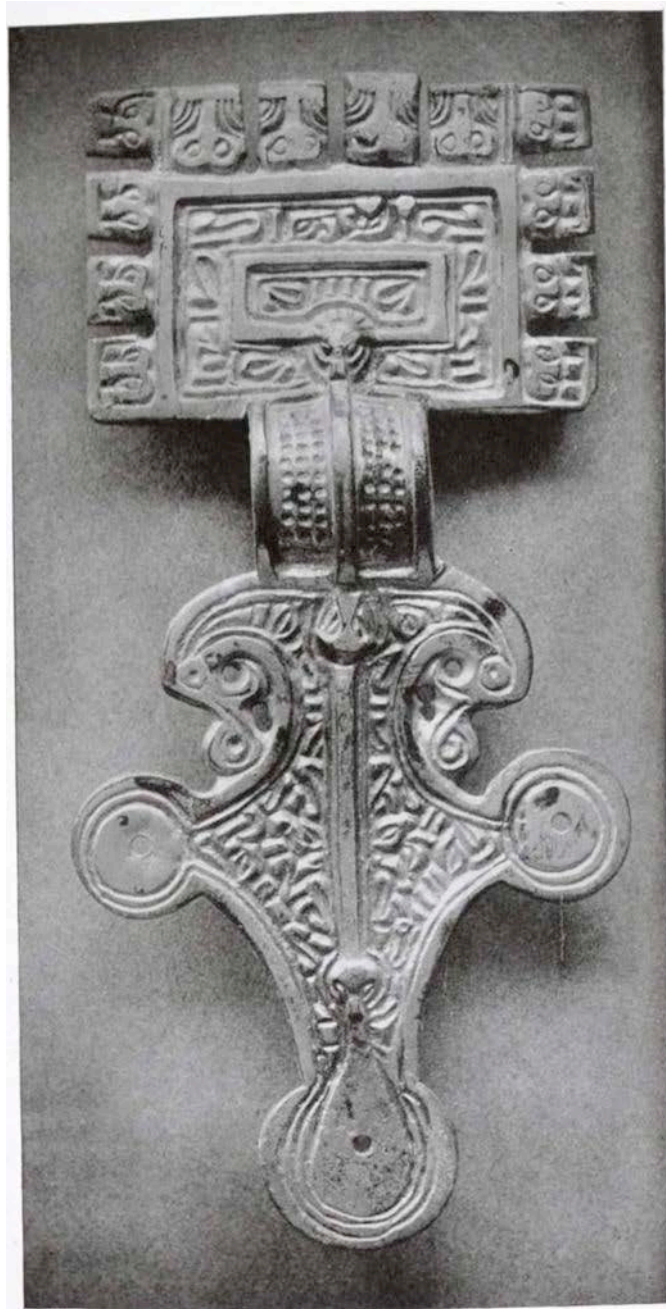
LIST OF ACCESSIONS FOR THE YEAR 1914

Presented June 10, 1915

Museum Issue

With One Plate

Reprinted from the Cambridge University Reporter



Phot. J. Palmer
Clarke.

Saxon bronze-gilt brooch.
Found at Harlton, Cambridgeshire, 1875.
Trinity College Loan Collection.
1914. 23. 3.

University of Cambridge

MUSEUM OF ARCHAEOLOGY AND OF ETHNOLOGY

THIRTIETH ANNUAL REPORT

OF THE

ANTIQUARIAN COMMITTEE

TO THE

SENATE

WITH

LIST OF ACCESSIONS FOR THE YEAR 1914

Presented June 10, 1915

Museum Issue

With One Plate

Reprinted from the Cambridge University Reporter

1915

CONTENTS

	PAGE
REPORT	3
List of Donations to the Museum Accessions Fund	6
List of Donations to the Illustrations Fund	6
List of Donations to the New Museum Building Fund	6
. List of Donations to the Fittings Fund	6
APPENDIX :	
1. List of Accessions from January 1 to December 31, 1914	
I. Archaeology	
British:	
Prehistoric	7
Roman	8
Saxon	8
Mediaeval and Later	8
Foreign:	
Europe, Africa, America	10
II. Ethnology :	
Europe	10
Asia	10
Australia	12
Melanesia	12
Polynesia	13
America	13
Africa	13
III. Books:	
Archaeology	14
Ethnology	14
Geography and Travels	15
Museum Publications	15
Catalogues	15
Serial Publications	16
Reports	16
IV. Drawings and Photographs	16
2. List of objects received on deposit from January 1 to December 31, 1914	
Trinity College Collections	17

Report of the Antiquarian Committee for the year 1914

MUSEUM OF ARCHAEOLOGY AND OF ETHNOLOGY,
June 10, 1915.

The ANTIQUARIAN Committee beg leave to present their Thirtieth Annual Report to the Senate.

New Building. Good progress has been made, in spite of various delays caused by trade disputes, with the erection of the second section of Block II. Not only has the ground floor been now completed, but it has been possible to continue building operations, as the generosity of several benefactors has provided the requisite funds for the completion of the entire section. This extension will provide half, i.e. fifty feet, of the entire length of the three main galleries, and an attic of the same extent.

With the next section, the last of Block II, the Museum portion of the building will be complete. It will contain the main entrance and staircase, the Walter Foster Bay, and the remaining half of the main exhibition galleries. The appeal for funds for the erection of this block has been suspended since the outbreak of war. Until this block has been erected, the housing of the Foster Bequest in accordance with the condition attached to the munificent benefaction of the Foster family cannot be carried out. The money has, by the generous permission of the donors, been temporarily used to defray the cost of Block I and subsequent sections.

Meanwhile, pending this extension, the Curator proposes to take in hand the permanent arrangement of certain collections in Block I : devoting the Maudslay Hall to American exhibits and the Andrews Gallery to an educational series, and reserving certain show-cases on both floors for the temporary display of the local antiquities and for such other collections as the remaining show-cases will hold. The new galleries which are at present unfurnished will be utilised as unpacking and sorting rooms for the collections hitherto temporarily stored in Block I.

Benefactors commemorated. The ground floor of the new section has been named the " Keyser Gallery," after Charles E. Keyser, M.A., of Trinity College, President of the British Archaeological Association, who subscribed one thousand five hundred and fifty pounds to cover the cost of its erection.

The first floor which is to be devoted to the exhibition of local antiquities will be named the " Babington Gallery" in commemoration of the late Charles Cardale Babington, M.A., F.R.S., of St John's College, for many years Professor of Botany in the University and sometime President of the Cambridge Antiquarian Society. The erection of this gallery was made possible by the generosity of Mrs Babington, who, in memory of her husband's love for archaeology, undertook to defray its entire cost amounting to fifteen hundred pounds. Professor Babington was closely associated with the Cambridge Antiquarian Society from its foundation, and it is to him that the University is chiefly indebted for the valuable collections which the Society transferred to the Museum in 1883. It was Babington's zeal for the preservation of local antiquities that led to the formation of the Society's museum; and to the end of his life his interest in the welfare of the local collections never flagged.

Lastly the name of Bevan will be attached to the Ethnological Gallery, which is to occupy the second floor, in grateful recognition of the constant generosity which Anthony Ashley Bevan, M.A., of Trinity College, Lord Almoner's Reader in Arabic, has shown to the Museum. His support of the Accessions Fund during many years has enabled the Curator to enrich the Museum with a notable series of objects illustrative of the now extinct Maori art, and to fill a large number of serious gaps in the collections from other parts of the world. Professor Bevan has also been a generous contributor both to the Building Fund and to the Furniture and Fittings Fund.

Fittings. Sir David Salomons, M.A., of Gonville and Caius College, has generously presented four large oak bookcases with plate glass doors. A considerable sum has also been subscribed for new cases and fittings. Professor Chadwick's donation has purchased a plate-glass table case for additional accommodation for Saxon ornaments, and Professor Bevan has made provision for the erection of a large show-case for the exhibition of ethnological specimens. Mrs Babington has provided the means to furnish in part one of the bays in the Babington Gallery. The Baron and Baroness Anatole von Hugel in making their last donation to the Building Fund, stipulated that a portion should be set aside for housing the Fijian and other South Sea Island collections. This sum cannot be used for its original purpose until certain subscriptions have been paid into the Building Fund, as it has in the meantime with the consent of the donors been advanced to defray the cost of completing the second section of Block II.

Work Done. Lists of Accessions numbering over three thousand objects received during the four years 1910—1913, have been compiled by the Curator and issued with the belated annual reports for 1912 and 1913. Various collections have been overhauled and relabeled, and a large number of archaeological and ethnological objects have been cleaned, repaired, and mounted by the Assistant.

Lack of show-cases has retarded work. It becomes more and more difficult to supervise the specimens and secure them from damage by moth etc., so long as the bulk of the collections remain packed up in boxes. The space temporarily assigned to the library in two rooms on the ground floor of Section B has proved insufficient for its accommodation, and it has been impossible to arrange the books so as to make them available to students.

Accessions. Owing to the increasing accessions, it has been found necessary to abbreviate as far as possible the description of specimens in the Accessions List, and for the greater precision of registration a change has been introduced in the numbering. Instead of as heretofore giving a separate number to every object therein enumerated, each collection has been treated as a unit, and each specimen that forms part of such a collection is distinguished by a subsidiary number.

I. Gifts. The year has been exceptionally rich in valuable gifts to the collections, among which may be specially mentioned:

Archaeology. A find of Roman pewter dishes, saucers, and ornate cups from Mildenhall, Suffolk; a set of fifteen iron bells of graduated sizes from Chippenham, Cambridgeshire; and a collection of silk winders and sewing requisites of the 17th to 19th century, new to the collection, purchased with a number of other local antiquities out of the grant received from the Cambridge Antiquarian Society.

A British urn-shaped food-vessel, roughly incised, found at Sudbury, Suffolk, given by J. Sinclair Holden, M.D., and the Rev. G. Montagu Benton, M.A.

A representative set of the objects, including stone implements, antler-picks, and animal and vegetable remains, found in the excavations made by the donors at Grimes Graves, Norfolk, 1913 presented by the Prehistoric Society of East Anglia, and Mrs T. S. Hall.

An iron inkpot with bronze lining, added to the Barrington series of Saxon Antiquities by A. F. Griffith, M.A.

A bronze brazier of the loth century which was found on the site of the new extension of Addenbrooke's Hospital, 1914; presented by Baron Anatole von Hüge).

A slab of rock bearing a prehistoric incised drawing of an animal's head, found detached by the donor in the Tenda Valley of the Italian Maritime Alps; given by C. Bicknell, M.A.

A number of interesting Egyptian antiquities have been received from the Egypt Exploration Fund. A complete list of these objects will be given in next year's Accessions List.

Sir Everard im Thurn, K.C.M.G., has presented an interesting collection of British Guiana stone implements, including three large spear-heads chipped in quartz.

A ceremonial shield-shaped axe-head from Ecuador, and a painted earthenware figure from Chiriqui, Panama, have been added by John Venn, Sc.D., F.R.S., to the few objects from Central America in the Museum.

Ethnology. The fine Andaman series, which previously consisted mainly of the Man Collection presented by Sir Richard Temple in 1892, has been so richly supplemented by the gift of A. R. Brown, M.A., who as Anthony Wilkin Student visited the Islands in 1900 and 1907, that it may now be considered the most complete of its kind.

A most important addition has also been made to the New Guinea collection through the generosity of A. F. R. Wollaston, M.A. As the result of his sojourn with the primitive people of the Utaqua River, a most valuable collection has been received which includes a carved dug-out canoe, over forty feet in length, and a most remarkable series of clubs carved with stone implements.

A list of the Zulu collection presented by the late Sir Henry Bulwer, G.C.M.G., and recorded in last year's report, is given in the appended list of Accessions.

A carefully labelled set of objects made by various tribes of British North Borneo has been given by W. H. L. Bunbury, M.A.

An example of the rare Guiana square-sided club armed with a stone celt, from the Essiquibo River, has been presented by Sir Everard im Thurn.

II. Deposits. To the Master and Fellows of Trinity College the Museum is specially indebted for the transfer to the Museum of most of the objects of antiquarian interest and of all the ethnological specimens, which had accumulated in the College library. Valuable additions have thus been made to the series of local antiquities: in particular the Saxon series has been enriched by a number of local finds, among which may be mentioned an exceptionally beautiful embossed cinerary urn from Sandy, Bedfordshire (figured by Battely in *Antiquitates Rutupinae*, 1745), and an unusually large bronze-gilt brooch, of the ornate square-headed form, from Orwell, given to the College by Professor T. M'K. Hughes; and two large ornate leaden vessels, one from Six Mile Bottom, Cambridgeshire, the other of unknown origin, of uncertain date, also given by Professor Hughes. The small ethnological collection, consisting of personal ornaments, weapons, implements, etc., mainly from New Zealand and Tahiti, formed during Captain Cook's first exploring voyage to the Pacific in H.M.S. *Endeavour*, 1768-1771, and presented to the College soon after its return to England, by the Earl of Sandwich, First Lord of the Admiralty. It is needless to dwell on the interest of such an accession*.

* In 1912 the Earl of Denbigh sent on deposit to the Museum a small collection of similar objects which had been collected by Sir Joseph Banks and were presented by him to the Welsh zoologist, David Pennant, in whose house, Downing Hall, Flint, they remained up to the date of their transfer to the Museum (See *Annual Report*, 1912, Deposits No. 1—74.)

The following donations were received during the year:

	£	s.	d.
Accessions Fund :			
The Cambridge Antiquarian Society	25	0	0
John Venn, Sc.D.	25	0	0
Baron Anatole von Hügel	6	0	0

ILLUSTRATIONS FUND:

Baroness Anatole von Hügel (for Catalogue of the Fijian Collection)	50	0	0
In small donations	8	10	3
	8 10 3		

BUILDING FUND :

Mrs Babington. In memory of Charles Cardale Babington (inclusive of £50 allocated to Furniture and Fittings Fund)	1,550	0	0
Baron and Baroness Anatole von Hügel (2nd and 3rd donation, inclusive of £600 allocated to Furniture and Fittings Fund)	1,200	0	0
A. A. Bevan, M.A. (5th donation)	400	0	0
Charles E. Keyser, M.A. (2nd donation for Keyser Gallery)	50	0	0
Sir Adolphus Ward, Litt.D., Master of Peterhouse (10 th annual subscription)			
Sir Henry Bulwer, G.C.M.G. (6th donation)	10	10	0
Gerald M. Fitzgerald, M.A.	10	0	0
William Froude, Esq.	10	0	0
The Rev. Canon Foakes-Jackson, 1). D. (2nd donation)	5	5	0
Miss Ward (2nd donation)	5	5	0
Sir Francis Darwin, Sc.D. (2nd donation)	5	0	0
Clarence Bicknell, M.A.	5	0	0
The Rev. H. P. Stokes, LL.D. (2nd donation)	5	0	0
Interest to March 1914.....	1	1	0
	264 6 4		

The sums already acknowledged (including promises of £550) amount to £21,754. 17s. 10d., making a total of £25,276. 5s. 2d. £3521 7 4

FURNITURE AND FITTINGS FUND :

Baron and Baroness Anatole von Hügel (see above)	600	0	0
Professor Bevan (towards furnishing the Bevan Gallery) .	100	0	0
Mrs Babington (see above)	50	0	0
Professor Chadwick (for exhibition of Saxon ornaments) .	10	10	0

The Committee have pleasure in availing themselves of this opportunity of expressing on behalf of the University their gratitude to all who by gifts to the collections or to the funds have so materially contributed to the progress of the Museum.

Accounts. The accounts for the year have been audited by the Committee. (See University Accounts, p. 108.)

Lists of Accessions to the Museum and of Objects received on Deposit from January 1 to December 31, 1914, are given in the Appendix.

M. H. JAMES, <i>Vice-Chancellor</i> .	H. H. BRINDLEY.
H. P. STOKES.	W. H. R. RIVERS.
J. W. L. GLAISHER.	ELLIS H. MINNS.
A. C. HADDON.	J. A. VENN.
WILLIAM RIDGEWAY.	SYDNEY C. COCKERELL.
FRANCIS JENKINSON.	W. B. REDFERN.

APPENDIX I

I. LIST of Accessions from January 1 to December 31, 1914.

I. ARCHAEOLOGY.
BRITISH.

PREHISTORIC.

STONE.

(Unless otherwise specified the implements are made of flint.)

1. A representative series of the flint implements, antler picks, and animal and vegetable remains, together with samples of the strata of charcoal and soils found in the excavations made by the donors at Grimes Graves, Norfolk, 1913. *The Prehistoric Society of East Anglia and Mrs T. S. Hall.*

CELTS.

2—5. *Chipped*: Four with sharp sides and rounded butt-ends (5".5 x 2"—2".2 x 1".2), C., S. and N.; and

6. *Partially ground*: One with convex back and taper butt (3".2 x 1"-6). Feltwell, N.+ *C. A. S. [Nos. 2—6].

ADZES.

7—15. *Chipped*: Nine from C., S. and N.: one oval, bowed example with flat lower surface and very sharp sides (5".9 x 2".2), Feltwell, N.; and eight smaller, including one, the largest (4".2 x 1".8), with ridged back from Hilborough, N., and one triangular (? adze) with convex back from Barton Mills, S. *C. A. S.

CHISELS.

16—30. *Chipped*: One large with boldly convex back, chipped flat lower surface, rounded cutting-edge and pointed butt (5".7 x 1"-5), Burnt Fen, C.; and fourteen, comprising two distinct forms, from Suffolk and Norfolk. *C. A. S.

BORERS.

31—42. Twelve from Suffolk and Norfolk: eight with expanding base, including one with broad flat point and triangular base (3".6x3"), Cranwich, N.; two drills: one small, carefully chipped, of oval section with shouldered base (1".9 x 0".9), Cavenham, N.; one slim, ridged flake of "pigmy" type with one worked edge (1"*1 x 0".2), Kenny Hill, 8.; and two with ridged blunt point, one made of a contorted cylindrical flint, Icklingham, S. *C. A. S.

SCRAPERS.

43—55. Thirteen of various forms from S. and N., including three spoon-shaped from Suffolk; two crescentic "shaft-scrapers": one with ridged shank (2".1 x 1".8), Cranwich, N.; one triangular with finely chipped convex back (1".7 x 1".5), Weeting, N.; one large of unusual form consisting of a boldly ridged square-ended tang expanding into a triangle with blunt, bevelled edge (5".1 x 3".2), Cranwich, N.; and one side-scraper, West Tofts, N. *C. A. S.

KNIVES.

56—72. *Chipped*: Two large, roughly spindle-shaped: one broad with convex back and flat lower surface (4"*9 x 1"*5), Hilborough, N.; and one with convex faces (4"*2x 1"-4), West Tofts, N.; and fifteen worked flakes with chipped backs, Suffolk and Norfolk;

73, 74. *Partially ground*: one oblong bowed, with flat faces and sides ground to a sharp bevel (2"*3 x 1"-1), Undley, 8.; and one roughly oval with convex back and edge ground at one end only (2"-6 x 2"), Lindford, N. *6. A. S.

ARROW-HEADS.

75. *Tanged*: One chipped in the rough with bold shoulder and carefully shaped stem-like tang (1"*6 x 0"*7), Undley, 8.;

76—85. *Tanged and barbed*: One with serrated edge, and long square tang and barbs (1"-4, imperfect), Burnt Fen, C.; nine of various forms, including one flat triangular, with large oblong tang (1"x0"*9), Copolow, 8., and three broad with minute triangular tang and pointed barbs very roughly fashioned, Suffolk and Norfolk;

86—88. *Single-barbed*: One finely chipped, triangular, cusped, with broad straight barb (point missing), one indented with short barb and one with curved lateral barb, Suffolk;

89, 90. *Triangular*: One stout with nicked base forming a pair of square-ended barbs (1"*4x0"*9), Eriswell, S., and one with indented base (1"*4 x 1"), Kenny Hill, 8.;

91—96. *Leaf shaped*: Four with flat under surface and rounded base, Undley and Eriswell, 8., one pointed oval

+ The letters C., S., and N., printed after the names of places, indicate, respectively, the counties of Cambridgeshire, Suffolk, and Norfolk.

*The name of a donor is marked with an asterisk in those cases in which the object has been acquired by purchase with money subscribed to the Museum Accessions Fund.

C. A. S. stands for the Cambridge Antiquarian Society.

with convex faces (1"1 x 0"7), Undley, S.; and one much larger (base missing) approaching lozenge-shape, Undley, S.; and

97. *Lozenge-shaped*: One of rounded outline with convex back (1"9x0"8), Eriswell, S. 1895. *C. A. S. [Nos. 70—90].

JAVELIN - HEADS.

98. *Tanged*: One thick convex-faced with rounded shoulders and tang (2"-6x1"1), Eriswell, S.;

99. *Tanged and barbed*: One finely chipped, straight-sided, with pointed barbs and oblong tang (point missing), Mundford, N.;

100. *Triangular*: One thick elongate with indented expanding base (2".2 x 1"2), Mildenhall, S.;

102. *Chisel-ended*: One well finished with uneven edge (1"-0x 1"-4), Undley, S., and one large with cusped

edge (? javelin head), Tuddenham, S. *C. A. S. [Nos. 91—95.]

BRONZE.

CELTH.

103. One flat with expanding cutting-edge, and sharp rounded butt-end (6"-9x3"-4), Methwold, N. *C. A. S.; and

104, 105. Two flat, very roughly cast. Westmorland. *Professor T. McKenny Hughes.*

EARTHENWARE.

106. An urn-shaped "food-vessel," with slightly overhung rounded rim, decorated with three encircling bands of incised vertical lines (3"1 x 3"1). Acton Lane, Sudbury, Suffolk, 1900. *T. Sinclair Holden, M.D., and the Rev. G. Montagu Benton, M.A.*

ROMAN

PEWTER.

107 1—9. Three flat circular dishes: the largest (15"-2) with upstanding flat-edged rim, and two smaller (11".8— 14"-8) with broad flat marginally beaded rim; two flat-bottomed saucers of Samian pattern: one plain (6" x 1" 3) with upstanding rim, and one ornate (5"-4 x 0"-8), the curved rim bearing a raised fluted band, the bottom an ornate roundel; and four bowls: one plain funnel-shaped with raised bottom and flat rim (5"1x2"3), two basin-shaped, one plain (5"4x2"-3) with wide, curved rim, and one ornate (3" 9 x 2" 4) with flat rim set with a row of bosses, and one plain flat saucer-shaped (1"-6x0"-9) with trumpet-shaped base. Found together at West Row, Mildenhall, S. *C. A. S.

BRONZE.

108. An object (? strap-slide), resembling a square-headed Saxon brooch with truncated bow: the flat head, with indented upper margin and triangular base, carries at the back a pair of strap-like loops (3"-1 x 1"-4). War Ditches, Cherryhinton, Cambridge. Figured: Proc. Camb. Ant. Soc. Vol x. (see Hughes, Cherryhinton, p. 453). *The Cambridge Antiquarian Society.*

109. A tee-shaped fibula with grooved bow, found with a melon-shaped clay bead, part of a small urn and earthenware and bronze fragments. Huntingdon Road, Cambridge.

1912. *Professor T. McKenny Hughes.*

110. A finger-ring: a beaded convex band with one pointed overlapping end. St Neots, Hunts. *C. A. S.

IRON.

111. A bowed knife with shouldered taper blade and long square-sided looped tang (11" x1"). War Ditches, Cherryhinton, 1913. Found by the donor. *M. D. Forbes, Esq.*

EARTHENWARE.

112. A drinking cup of light coloured clay with five oval indentations and an encircling grooved band (6"-8x 3"-7). Ridgwell near Haverhill, Essex, 17—. *The Rev. H. E. Pannell, M.A.*

113. Portions of various kinds of vessels from Horningsea, C. Figured: Proc. Camb. Ant. Soc. Vol. x. Pls. ix—xi (see Hughes: On the Potter's Field at Horningsea, p. 174); and from Chesterford, Essex, 1896. *Professor T. McKenny Hughes.*

114. Fragments of rough earthenware, Cave's Inn (Tripontium), near Rugby. *C. Sayle, M.A.*

GLASS.

A flat, oval bead (0"-8 x 0"-7 x 0"-2) with large perforation of milky blue glass decorated on both faces with a panel of ribbed chequers (? Roman). Upper Hare Park, Bottisham C., 1910. *Professor T. McKenny Hughes.*

SAXON.

116. A cylindrical ink-pot of cast iron with bronze lining (top missing), and a small open-ended tube (penholder) running down one side (d. of pot 1", of tube 0".2),

Saxon Cemetery, Barrington, C., 1880. Figured: *Sussex Archaeological Collections*, Vol. LV. (see Griffith, "A Homan Glass Inkpot," p. 72). *A. F. Griffith, M.A.*

MEDIAEVAL AND LATER.

117. A circular, flat, bronze knob, engraved with St Katherine and St Barbara (1".9), 13th century. Canterbury. A. G. W. Murray, M. A.

118. A bronze brazier: the basin-shaped bowl, provided with a pair of heart-shaped drop-handles, is raised on a trumpet-shaped base (7".6 x 4".6), 15th Century. Site of Addenbrooke's Hospital Extension, 1914. Baron Anatole von Hugel.

119-122. Four iron pot-hooks of distinct patterns with ratchet and slot adjustments, Cambridge;

123, 124. Two iron toasters with sliding bread holder; one a tripod with vertical rod, and one a horizontal rod for hooking on to bars of grate, Cambridge; and

125. A brass spoon with seal head and fig-shaped bowl, 17th century. Croydon, C. A. S. [Nos. 119—125.]

126—128. Three ladles: one of horn for soup, and two of wood with deep round bowls. English, 18th century. Cambridge. *Purchased.*

129. A pastry wheel-cutter of wood. English, 18th century. *Mr John Jennings.*

180. A nutmeg raper: a cylindrical ivory case to hold the nut with a metal prater attached inside the screw-lid. Early 19th century. *C. A. S.

181. A wide-mouthed globular jug, with bow-handle of green glaze (4"-5 x 4"-2). 16th century. St Peter's College, 1914. *Purchased.*

182. A slim Lambeth-ware jug with ribbed body and expanding base (8"-9 x 3"5). London. *C. A. S.

138. A brown-glaze cylindrical jar with splay base (4"7 x 2"8), 17th century, containing a strip of silver-thread embroidery wrapped in brown paper. Found in an old house in Falcon Yard, Cambridge. *Professor T. McKenny Hughes.*

134, 135. Two ointment pots of white glaze, and fragments of other vessels and tobacco pipes, 17th—18th century. Jesus Lane, Cambridge. *The Rev. C. E. Lambert, M.A.*

136. Fragments of 16th—17th century glazed ware. Site of Addenbrooke's Hospital Extension, 1914. *Mr G. Tolley.*

137. A large, flat-sided bottle of green glass encased in wickerwork, 18th century. St Neots, Hunts, *M. W. W. Rowlett.*

138. A number of 17th—18th century clay tobacco pipes. Cambridge. *Professor T. McKenny Hughes.*

139. 1-11 Brass furniture fittings: Four knobs and two drop-handles for drawers, a keyhole escutcheon, and eight curtain clips and holders. English, 18th to 19th century. Bury St Edmunds. *Mr John Jennings.*

Ten Keys:

140—142. One small, of bronze, with flat annular bow (? Roman), Lakenheath, S.; and two of iron, 18th century. Cambridge. *C. A. S.

143—147. Five of iron: one with spiked square-sided stem, 15th—17th century. Winchester. *Charles J. P. Cave, M.A.*; and

148, 149. Two small keys: one flat of bronze, Lakenheath, S., and one of iron (? English). *Baroness A. von Hugel.*

150. A small brass padlock with screw staple. Cambridge. *Mr John Jennings.*

151, 152. A tall taper-clip with turned wooden base, and a hanging taper-sconce with long shanked hook of iron, Warnham, Sussex;

153—159. Two steel candle-snuffers, one with discoidal ends and five japanned snuffer-trays. English 18th—19th century; and

160, 161. Two circular ornate comfit boxes of pressed horn and of cardboard and lace-paper. 18th—19th century. *C. A. S. [Nos. 151—161.]

162. A carved, oblong, wooden box for writing materials (7"2x4"-6) inscribed "S. G.", with hinged lid, fitted with a pewter inkpot and partitions. English 17th century. *Purchased.*

163. A circular diminishing glass in mother of pearl case, with silver mounts (1"-5). Early 18th century. *Mr John Jennings.*

164. 1—126 A collection of sewing requisites, mostly ornate: comprising silk winders, reel stands, darning stands, wax holders, pin-cushions, needle-cases, thimble and thimble-cases, tape measures and stiletos of various patterns in wood, ivory, and metal. English, 17th—19th century; and

165—168. An ornate gauffering-iron of brass and steel with finely moulded handle (10"3), 18th century; and three gauffering-iron stands of distinct patterns. Bury St Edmunds. *C. A. S. [Nos. 164—168.]

169, 170. Two finger-rings: one gold decade-ring with cross on oval shield, and one hair-ring inscribed "Unto you my heart is true." Irish, 18th century; and

171, 172. Two necklaces, composed, respectively, of ten polished agate discs in enamelled gold mount, and of thirteen oval, tortoise-shell plaques and pendant with gold inlay in gold filigree mount. *Mrs Laurence Humphry.* [Nos. 169—172.]

173. A small oblong, silver shoe-buckle. *Mr John Jennings.*

174. A child's pair of leather clogs, with wooden soles and steel latches (5"1). ?English 18th century. *Purchased.*

175. A watch-shaped silver "Perambulator" (i.e. pedometer), in shagreen case, with china dial inscribed "Ralph Gout, Patentee, London." Invented by R. L. Edgeworth, 1768 (see *Memoirs of Richard Lovell Edgeworth, Esq.*, London, 1821, Vol. 1, p. 170). *Mrs Laurence Humphry.*

176—178. Three coin scales of brass and steel, with weights, in shagreen, wood and tin cases. English 18th—19th century. *Purchased.*

179. A brass disc-weight, for weighing guinea pieces,

Inscribed both faces "P G" the obverse crowned, Cambridge, and 5 : 8

180. An orrery in mahogany case (4"-4 x 8"4), by Ryland of Northampton, with additions by John Jones of Holborn, and a descriptive pamphlet, dated London 1781. *C. A. S. [Nos. 179, 180.]

181. An early form of zoetrope with revolving prism of mirror reflectors, labelled "Lebensrad mit Kreiselttrieb," etc., early 19th century; and

182 a, b. Two toy receptacles carved out of cherry stones, French 18th century. *Mr John Jennings.* [Nos. 181, 182]

183 1—7. A series of six horse-shoes: one very wide (? Saxon), Haslingfield, one annular, Stuntney, near Ely, one very large, formerly used for horses working on fen land, Isleham Fen, C.; and one closed with square heel, Beetham Green, one wide and one narrow, Brigsteer, and a pair of old ox shoes, Boroughbridge, Westmorland. Figured: *Proc. Camb. Ant. Soc.* Vol. x. Plate 7 (see *Hughes: On ancient Horse-shoes*, p. 249). *Professor T. McKenny Hughes.*

184. An ornate bronze horse-bit rosette (2"7), 17th century, London;

185 a—o. A set of fifteen bells (ranging in size from 4".6 x 4"—7"3 x 6"3) of oval section with contracted mouths, formed of riveted iron plates shewing much wear. All ore similarly decorated with a raised band, some shewing traces of brass plating, and are provided with elongate or knobbed tongues, and stout flat loops which arc double in two examples, Chippenham Park, O., 1913;

186, 187. Two socketed, iron shepherd's crooks of distinct form (13" and 16".2), Bury St Edmunds; and

188, 189. Two pig-scrapers of hoop iron with handles composed, respectively, of wood and of a cow's hoof. St Neots, Hunts. *C. A. S. [Nos. 184—189.]

190. An old form of tall, iron, candlestick with circular base, formerly in general use and now still locally sold in Wales as a "pig-scraper." Llandillo. *Mrs Sydney Hartland.*

191. A small model of an obsolete form of "staking iron" (i.e. hide-scraper) in use at Barrowby, Lincolnshire, till the latter part of the 19th century. Made by the donor. *Mr S. T. Cowles.*

192, 193. A tanged eel-spear with seven prongs of forged iron, Cambridge. *C. A. S.;

194. A socketed eel-spear with six square-sided, nicked barbs, Cambridge Fens. *Mr John Jennings.*

FOREIGN.

EUROPE.

198. A rock engraving: the head of a horned animal (17"5 x 5"2) incised on a slab of schist, found detached by the donor at the head of a gully in Val Fontanalba, near Tenda, Maritime Alps. Figured: Bicknell, Guide to the Prehistoric Rock Engravings in the Italian Maritime Alps. Pl. XLV1. *C. Bicknell, M.A.*

AFRICA.

190. A set of rough water-worn stone celts, Northern Nigeria. *A. Langlow Cock, Esq.*

AMERICA.

WEST INDIES.

197. A stone axe-head with expanded cusped butt-end (imperfect), St Vincent; and

198—220. A set of twenty-three shell axes and adzes, Barbados. *Sir Everard im Thurn, K.C.M.G.* [Nos. 197—220]

BRITISH GUIANA.

221, 222. Two amulets: a soapstone figure of a conventionalised animal (?jaguar), drilled for suspension (1"8 x 0"7), and a cylindrical bead (1"1 x 0"5) of lydian stone (the "Amazon-stone" of Sir Walter Raleigh), Morawhanna, N.W. District;

223—226. Three large spear-heads finely chipped in quartz: one broad triangular, with rounded tang (2"7 x 2"-1) of translucent stone, Essequibo River; and two: one with small shoulders and very broad square tang (2"0 x 1"-6) of opaque milky stone, and one with curved serrated sides, wide barbs and long pointed tang (3"-5 x 2"-1) of clouded stone; found associated with an earthenware cylinder decorated with four bands of indented triangles (2"6 x 1"-6) (? used for the decoration of bark-cloth), Barima River;

227—291. An axe (? ceremonial) of peculiar shape, consisting of a discoidal blade and a triangular butt-end divided by a pair of deep notches (4"-6 x 3"-8); ten axe-heads: seven shield-shaped with square nicked bases, including one (the largest 9"-6x2"-4) chisel-like example of oval section;

one oblong with double indented sides; and two with very small nicks, the larger (5"2x5"3), a half oval in outline, the smaller (4"x4"4) of truncated triangular form with incurved sides and expanding cutting-edge; thirty-one celts of various forms (2"-8x1"1—11"-2 x 2"7), including a small triangular example with nicked sides, and one with an expanded butt-end, shaped like a human leg; three curved, celt-like implements resembling bean-pods (the largest 11"7 x 3"1); three chisels; four hammer stones; a grinding slab; and eleven whetstones; a spatula-shaped object with incised pattern, and a small pod-shaped object (? charms). From various localities; and

292—315. Twenty-three stone implements found in shell-mounds: viz., a tomahawk roughly shaped from a sub-triangular slab, the expanding peak bearing a ground cutting-edge and the flat faces incised decoration (12"4 x 8"7), Warramuri; one nicked axe-blade; seven celts; one largo, finely shaped adze with convex back (13"-5 x 3"-4); a pounder of slim conical form (9"3x2"-1); eleven hammer stones (three with finger depressions); two small, shaped stones (? charms); a number of flakes, etc.; and samples of the mound-strata consisting of agglutinated shell and bone fragments. Mostly from Warramuri. *Sir Everard im Thurn, K.C.M.G.*

MEXICO.

310. A human mask of stone with fiat background, and sides drilled with a pair of cup-shaped perforations (2" x 1"6). Cholula, near Pueblos, 1911. *Mrs Laughton.*

COLOMBIA.

317. An earthenware figure of a standing man, with painted face, wearing a patterned head and loin cloth (7"2, arms and one foot missing). Chiriqui, Panama. **John Venn, Sc.D.*

ECUADOR.

318. A ceremonial shield-shaped axe-head of diorite with expanded, sharp-edged butt-end (7"7 x 5"7). Atacames. **John Venn, Sc.D.*

319. A pounce-glass; stemmed, with domed cover and metal stopper (4" x 8). Venetian early 19th century. *Mr John Jennings*.

320. A small glass bottle with long spout. Used in Catalonian *Posadas* for drinking wine. *The Honble Mrs Horace Darwin*.

321—333. Thirteen jugs, bowls, dishes, etc., of rough, decorated earthenware. Collected by the donor in France, Spain, Switzerland, and Malta. *Baroness Anatole von Hugel*.

334—336. An iron cow-bell with carved wooden collar, a hide covered wooden water flask with plaited shoulder strap, and a skin purse. *Purchased*.

ASIA.

CYPRUS.

337—350. Nine long-sleeved gowns and five sleeveless jackets of plain and dyed woven native material. Collected by the donor in 1886. *Sir Henry Bulwer, G.C.M.G., Former High Commissioner in Cyprus*.

INDIA.

351—358. Two pairs of leather shoes, and a pair of sandals (*Chaplis*) in red and gold brocade. Worn on state occasions by the Nawab of Teri; and

354. A specimen length of *lungi* (78" x 8") showing the

II. ETHNOLOGY

EUROPE

319. A pounce-glass; stemmed, with domed cover and metal stopper (4" x 8). Venetian early 19th century. *Mr. John Jennings*.

320. A small glass bottle with long spout. Used in Catalonian *Posadas* for drinking wine. *The Honble Mrs Horace Darwin*

321 – 333. Thirteen jugs, bowls, dishes, etc., of rough, Decorated earthenware. Collected by the donor in France, Spain, Switzerland, and Malta. *Baroness Anatole von Hugel*.

334 – 336. An iron cow-bell with carved wooden collar, a hide covered wooden water flask with plaited shoulder strap and a Skin purse. *Purchased*

ASIA.

CYPRUS

337 – 350. Nine long-sleeved gowns and five sleeveless jackets of plain and dyed woven native material. Collected by the donor in 1886. *Sir Henry Bulwer, G.C.M.G., Former High Commissioner in Cyprus*.

INDIA

351 – 353. Two pairs of leather shoes, and a pair of sandals (*Chaplis*) in red and gold brocade. Worn on state occasions by the Nawab of Teri; and

354. A specimen length of *lungi* (78" x 8") showing the

various turbans (*lungi*) patterns which are woven of Afghanistan silk on the hand-loom of the Kohat Valley weavers; and from which intending purchasers make their selections. N.W. Frontier. *E. B. Howell, M.A.*, [Nos. 351—354.]

355—358. A Naga battle-axe and two spears, the wooden shafts fringed with coloured hair, and a deep open basket of plaited ratan with head loop, decorated with a human mask and grass fringes. Assam. *Mr & Mrs Leighton*.

359—364. Samples of common native earthenware: three coloured dishes and three small cups. Lucknow, Moultan, and Ahmedpur. Collected in 1878 by the donor, the *Baroness Anatole von Hugel*.

BURMA.

365. A three-stringed musical instrument, resembling a mandoline, with finger board and ribs inlaid with incised bone. *Major H. E. Cotterill*.

JAPAN.

366. A *shari*, i.e. a diminutive rectangular glazed shrine of ornate bronze, enclosing two pearls. *W. Crewdson, M.A.*

BORNEO.

367. 1—26. The Banbury Collection from British North Borneo comprising twenty-six objects, viz.:

1. *Hill Dyak*: a grass cap with feathers. (Central Dist.);

2—13. *Kenjah*: three carved ear-ornaments: one pen-annular and one hooked, with human masks of wood, and one with scroll of horn bill beak; a wooden bracelet inlaid with tin; six horn finger rings; an oval basket with cap of coloured cane; and a ring of horn bearing a crescent representing a pair of buffalo horns, used by children in the buffalo fencing game;

14—20. *Dusun*: a sleeveless jacket of plaited bark fibre; a set of eight narrow waist-bands of plaited coloured fibre; a bobbin-shaped bamboo receptacle for tinder, covered with plaited cane; a small bamboo quiver encased in plait-work with gourd receptacle for pith wads; two small bone-handled knives in wooden sheaths with neck loops; and a set of triangular metal clappers suspended from a looped plate. Used by old men whilst chanting ceremonial prayers;

21—26. *Murut*: a monkey-skin head covering; an oblong plaited mat-apron which is attached to the waist-belt behind for the wearer to squat on; a patterned mat bag; a large patterned mat of split cane; a bamboo quiver with finely carved wooden belt-hook, and a wooden carving (?charm) shewing a pair of conventionalised hornbill heads (used in certain dances). *W. L. H. Bunbury, Esq.*

ANDAMAN ISLANDS.

368. 1-311. The Brown Collection comprising three hundred and eleven objects, viz.:

1—8. *Charms*: A turtle's skull painted red and white; a man's skull bearing incised decoration and shell pendants attached to a netted band; two jaw-bones with shell fringes, and four painted human bones, Great Andaman; and

9—11. The lower jaw bone of an infant with fibre fringe; a jaw-bone of an adult person decorated with shell fringes; and a charm wrapped in hibiscus leaf, worn suspended from the neck, Little Andaman;

12—142. *Dress and personal ornaments*: Eighteen girdles made of pandanus leaf, of orchid skin, and of cane (mostly worn by women and children); seven belts composed of pandanus bark, of human bones, of turtle bones, of dentalium shells strung on netted bands, and of pandanus-leaf strands, Great Andaman. Nine belts of bark (worn by men), and ten girdles of "grass" worn by women and girls, Little Andaman.

Ten chaplets composed of human bones, of turtle bones, of shells, and of pandanus leaf; thirty-nine necklaces, of various construction, composed of dentalium shells, of fresh water shells, of seeds, of hibiscus and of ficus fibre, of small sections of bamboo, and of arrow shafts; four armlets composed of pandanus and hibiscus leaf; nine bracelets composed of turtle and of fish bones, of seeds, of bamboo sections, of fibre and shells, and of netted bands covered with dentalium shells; two pairs and four single garters composed of hibiscus bark, of turtle bone, of bamboo sections, and of plaited bands with dentalium shells; an ornament of pandanus leaf (worn by girls), and eight tassels worn when dancing; a shoulder-sling of bark, in which children are carried; samples of ornamental braid, rope, cord, string, and netting; a number of stamps made of strips of cane, used for decorating the painted face and body, and samples of red and white clay and of a stone from which a certain pigment is derived, used for painting the body, Great Andaman;

143—261. *Weapons, etc.*: Twenty bows: eleven with flat expanding shafts (four for boys), and two with slim rounded shafts (North Andaman), one very large decorated example of the expanding variety made for presentation (Middle Andaman), a boy's bow (South Andaman), and five of various sizes (Little Andaman); eighty-nine arrows: thirty-seven for shooting pigs, five with fixed, the others with detachable harpoon-like heads, one example to show its construction; forty-two for shooting fish, with heads of iron, of wood, of pig bone, and of sting-ray bone, and a series of examples shewing the various stages of manufacture, methods of binding, etc.; two wooden arrows used for target practice, and four small arrows used by boys (Great Andaman); and three fish arrows with iron heads (Little Andaman). Two fish spears with bambo points (North Andaman). Two harpoons with barbed iron heads (one for turtle and one for fish) attached to coils of rope; two turtle-nets with stone sinkers, a hand net and a netting needle (Great Andaman); and a hand net and a netting needle (Little Andaman).

262—289. *Mats and baskets*: Thirteen sleeping mats composed of strips of split cane (one decorated with glass beads) (Great Andaman); and one made of stouter cane (Little Andaman). Bundles of strips of cane used for making mats (Great Andaman). Thirteen baskets of various dimensions: four wide-mouthed, globular (North Andaman); and nine funnel-shaped with rounded base (South and Little Andaman);

290—310. *Utensils, implements, etc.*: Three earthenware cooking pots: two (one tied up in palm leaf for transport) from North Andaman; and one from South Andaman. Shells used for marking pottery; pieces of pearl-shell used as vegetable knives, shells used as knives and scrapers (Great Andaman); a shell with jagged edge used for carving arrows, etc. (South Andaman), and samples of various kinds of shell of which adzes and arrow-heads were formerly manufactured, and modern examples of those implements and weapons made from these materials for the donor by the natives of Great Andaman. Three knives and a skewer of bamboo; and three sharpened pigs' tusks (spoke-shaves); a ball of beeswax for waxing thread, with samples of resin and wax; and two canoe paddles, one for a boy (Great Andaman);

311. *Musical Instruments*: A model of a sounding-board used for beating time at dances, Great Andaman. Collected by the donor 1906 and 1907. *A. R. Brown, M.A.*

NICOBAR ISLANDS.

369. 1-18. Eighteen objects collected by the donor, viz.:

13

1—18. A head-dress composed of a strip of pandanus leaf, and a palm leaf fringe-dress; a square box of palm spathe; an oblong wooden dish with a pair of handles; one globular and three large bowl-shaped baskets with wooden rim-bases; a large

pronged wooden fish spear; a basketwork fish trap; two carved figures of birds: one large and one small, decorated in red and black; and a roll of pandanus leaf used as cigarette paper. Collected by the donor 1906 and 1907. *A. R. Brown, M.A.*

AUSTRALIA.

basket-work tray; two wooden cross-bows; a many

370 1-69. The Brown Collection from Western Australia comprising sixty-nine objects, viz.:

1-8. *Drat and perianal ornaments*: A girdle of human-hair string; two head-fillets of the same material, decorated with fur tassels (one made of dingo and rats' tail hair); two shell necklaces; two dance ornaments: tufts of emu feathers (one with resin handle), stuck in arm-band or belt; and a length of opossum-fur cord from the de Grey District;

9—36. *Weapons*: Three fighting-spears with elaborately carved heads (shafts of two missing), a hunting spear with single barb and the head of another (N.W. District); a spear-thrower carved with zig-zag bands, etc.; five spearheads with serrated edge: two chipped of stone, two of glass (one showing mode of attachment to shaft), and one of a porcelain insulator; eleven boomerangs (each specimen obtained from a distinct tribe), and two large painted ex

amples (Kimberley District); two clubs: one slim cylindrical, and one broad sword-shaped with well carved face (27"x3"-3); and two oblong shields carved on both faces (Kimberley District);

37—67. *Implements and utensils*: A stone chisel in short wooden haft, and the haft of another example; twenty chisels, and three gouges (chipped), and two hammerstones (pebbles); an oval, concave bowl with grooved faces; a fishing net of spinifex-fibre and samples of the raw material; and two baobab nuts with incised figures;

68, 69. *Magic*: A "pointing-stick," wound with human-hair braid, used for killing by magic; and two obsidianites, from the desert country, much valued by the natives for their great magical properties. Collected in 1911 by the donor. *A. R. Brown, M.A.*

MELANESIA.

NEW GUINEA.

371. 1—137. The Wollaston Collection from the higher and lower reaches of the Utakwa River, Dutch New Guinea, comprising one hundred and eighty-seven objects, viz.:

I. MOUNTAIN PEOPLE:

1—14. *Dress and personal ornaments*: A set of belts of split ratan; two penis gourds; a rain hood of plaited pandanus leaf; one head-dress of cassowary feathers and bones of various animals; a pair of ear ornaments of incised cane with pendants of seeds, parrot beaks and fur; three necklaces: one of dendrobium stalk and two knitted bands (one fringed with shells and one with animals' teeth); one feather ornament; and four string bags with neck loops;

15—34. *Weapons and armour*: Two bows and sixteen arrows used chiefly for the chase including special forms used for shooting pigs, cassowaries, small birds, and fish; a cuirass composed of the mid ribs of palm-leaves covered with coloured string-work; and a rectangular shield to which is hung a bone dagger and a string bag decorated with boars' tusks;

35. *Musical instrument*: A jews' harp in an ornate case, both made of bamboo;

36 - 59. *Implements and utensils*: Two axes with ground stone heads and bamboo hafts; one dagger (? for domestic use); a borer and two spoons of bone; nine ground stone knives (one wrapped in the silk of a caterpillars' nest); chert flakes used for carving arrows, etc.; three water vessels: two made of gourds and one of bamboo; fire making apparatus; two fire sticks and a set of ratan strips (one in bark-cloth wrapper) with a bamboo receptacle for tinder; a tobacco-pipe, formed of a nutmeg and a bird's bone with a roll of tobacco wrapped in pandanus leaf;

II. COAST PEOPLE:

60-115. *Dress and personal ornaments*: Three waistbands: two of netted string and one of plait-work; a woman's plaited apron; three fringes of cassowary feathers (worn round waist or head); a perineal band of bark cloth; three pubic shells and nine penis cases of carved bamboo; a plaited apron and three bodices of leaf-strips and of bast

worn by women; two head fillets: one woven with sockets for plumes and one plain; one plaited bonnet; four carved bamboo combs; one wooden nose-ornament with bead pendants; four ovoid collars of plaited ratan and grass (used also as a head-dress); three necklaces of shells, one with cane pendant; thirteen armlets: two of boars' tusks, used also as nose ornaments, four coiled ovoid (two with cassowary feather fringes), seven plaited of various patterns; two plaited ratan bracers; one leg band; and the tail of a ray carried as a swagger stick;

116—159. *Weapons, etc.*: Twenty-two clubs with caned heads of various designs, the larger number provided with natural or wrought stone: one is armed with a piece of iron, and one with a cap formed of the skin and tail of a sting-ray; a ? weapon, formed of the snout of a saw-fish mounted on two sticks which form the haft; two bows and nine arrows with plain and barbed heads; five spears of wood or bamboo, one armed with a bone point, the others with plain or lance-like wooden heads; three (one large and two small) fish spears; a harpoon with iron head, and a fishing-net;

160—164. *Musical instruments*: Five drums carved and plain;

165—167. *Canoe*: A dug-out with carved ends and gunwale (48' 6" x 2' 8"), a fretwork prow ornament, and a paddle;

168—175. *Ceremonial wooden tablets*: Six of elaborate designs, and two carvings (7 toys) representing hornbills;

176—187. *Implements and utensils*: Three stone axes with bamboo shafts, and one stone axe head; six carved wooden sago bowls, and two baskets. Collected by the donor 1912

1913. *A. F. H. Wollaston, M.A.*

372. A cylindrical nose-stick of shell, worn by men. Dorey Bay. *F. H. H. Guillemard, M.D.*

373. A well finished paddle of hard wood, the faces of the pointed blade decorated in relief with a conventionalised figure of a fish and of a double spiral (68"x4"-9), ?New Guinea. *John Venn, Sc.D.*

BANKS ISLANDS.

374—376. A fringe-dress; a small fishing net, and a netting-needle. *Mrs Egerton Hubbard.*

NEW HEBRIDES.

377. A slim club, the leaf-shaped blade expands into a square projection, and the cylindrical pointed shaft is bound with human hair string (37"-5 x 3"-l). Pentecost Island; and

378. A stout cylindrical club with distaff-shaped head bound with plaited string, the taper moulded butt ends in a

mushroom-shaped terminal (41"5 x 2"). Ambrym Island (Jennings Collection). **John Venn, Sc.D.* [Nos. 376 and 377.]

POLYNESIA.

MANGAIA.

379. A finely carved paddle of hard wood with cylindrical shaft rounded pommel and convex kite-shaped blade (42"-l x 7"-9). **Professor Bevan.*

AMERICA.

ALASKA.

380—382. Three oblong wooden bowls, the larger with fluted rim mode of a separate piece of wood, and two smaller with flat rims, inlaid with white shell. Holy Cross. *Purchased.*

a plaited hank of palm fibre (*Cumare*) for the manufacture of hammocks. Caquetios Indians of the Llanos of the Meta. *His Excellency Percy C. Wyndham, British Minister at Bogota.*

ARIZONA.

383. A water vessel of "coiled" ware with bow-handle, and orange-shaped body with raised basket-work pattern (4"-9x6")-Cliffdwellers of Homololi. *W. Crewdson, M.A.*

COLOMBIA.

384—387. A stool made of the carapace of a tortoise (17".5 x 10"*2); a winnowing fan (*plumero*) made of wild turkey feathers attached to a cane band; a taper (*chunko*) of twisted cotton and black beeswax rolled into a cylinder; and

BRITISH GUIANA.

388. A four-sided club with concave faces, and bead armed with a flat-sided stone celt (16".8 x 3"-8). Found buried on the Essequibo River. *Sir Everard im Thurn, K.C.M.G.*

389—390. Two clubs of hard wood: one with truncated oval blade incised with cruciform figures, and keeled, lozenge-shaped haft-end (26".9 x 8".5); and one four-sided with string-bound haft (15".5 x 3"-9). **John Venn, Sc.D.*

AFRICA.

BENIN.

391. A bottle-shaped receptacle for cosmetic, made of an elephant's pad. *N. M. Penzer, Esq.*

392. A paddle carved in open-work. *Purchased.*

UGANDA.

393. Twenty-seven Acholi reed arrows (some poisoned) with plain and barbed iron heads of various forms, in a cylindrical quiver made of an animal's skin. Lamogi, Gulu district. *W. K. Maturin, Esq.*

NYASALAND.

394—397. Three Angoni head-scratchers: wooden pins bound with black string; and a Yao basket (*Mtungwi*), round, with convex cover and carved wooden rims. *Miss Werner.*

BRITISH EAST AFRICA.

398—401. A Wasanye necklet: a flexible double strand served with copper wire with bead and spear-shaped brass pendants, Marafa, Mambri District; a Kikuyu five-strand head-fillet (*Ngazi*) of coloured glass beads from Kijabe, and a necklet of scented leaves wrapped in cloth from Kenia; perforated discs of white shell (*Mweri* or *Mwambo*) worn on string girdle by Rabi and Ribe women;

402—411. A Giryama wooden parrying shield (*Kipungu*) with handle-boss and long taper ends (45" x 2".9); and two bows with a number of arrows armed with wooden and iron heads; a Swahile open-basket used for marketing, from Lamu; and two earthenware cooking-pots, a food-bowl and two wooden peg-tops (*Pia*) from Jomvu. *Miss Werner.*

NATAL.

412. 1—154. The Bulwer Collection comprising one hundred and fifty-four objects of Zulu and Matebele manufacture, viz.:

1—61. *Dress and personal ornaments*: Four hide girdles: one hung with tail-like appendages, made of ape and wild cat fur, and three of cows' tails; a chief's head-ring, and a flat pebble used for cleansing the same; a fillet of leopard

fur, and a head-dress of black feathers (worn by men); thirteen bead ornaments, comprising eight for the neck, arms, and wrist, three for the ears, two satchels, and two bamboo receptacles with neck loops (worn by women); a broad, penannular, brass arm-guard with corrugated face (length 6".3); two combs, and five hairpins carved in bone; six horn strigils: three elongate leaf-shaped, with spiral twist, and three (one double) with bowed, arrow-shaped blades and rod-like handles; fifteen snuff-receptacles of various forms, eleven of horn, three made of gourds, and • one of four nuts; and seven bone snuff-spoons of distinct pattern; two bamboo receptacles with incised decoration for carrying letters;

62—115. *Weapons etc.*: Twelve chiefs' sticks, the heads carved in various patterns; six knobkerries: two with carved heads; thirty assegais, for throwing and for stabbing, with variously shaped iron heads; and six oval shields of variously coloured cow hide;

116—154. *Household goods and utensils*: Four wooden pillows of distinct form: three six-legged (one provided with a long straight handle), and one made to rock; five baskets: three globular of spiral coil-work, two being provided with flat, hinged covers (the larger, 24".8 x 14".4), and one with a loose cap, and two bowl-shaped; three circular trays of chequered, coiled basket-work; twelve vessels of light wood (block or black-banded), viz. four food-dishes: two large oblong with a pair of handles; two smaller oval (one with single handle); one tall cylindrical; two egg-shaped: one large with flat base, and one small with handle and six legs; three deep bowls with small perforated handles; and two single-handled mugs; a drinking-cup (*Ukamba*) with rounded base, of black earthenware, decorated with a band of bosses; seven spoons, and three ladles, with variously shaped handles; and a large funnel-shaped strainer of basket-work, and three spoon-shaped skimmers of plaited fibre. Collected by the donor 1874-1882. *Sir Henry Bulwer, G.C.M.G. Former Governor of Natal.*

413. An oblong Kaffir zimba with shell-disc rattles. *F. J. Allen, M.D.*

III. BOOKS.

1. ARCHAEOLOGY.

1. Man and His Forerunners. By H. v. BUTTEL-REEPEN, Prof. D. Phil. (Zool.), incorporating accounts of Recent Discoveries in Suffolk and Sussex. Authorised Translation by A. G. THACKER, A.R.C.S. London, 1913. 8vo. *Purchased.*
2. The Problem of the Eoliths. By F. N. HAWARD. (S.P., Proc. Prehist. Soc. East Anglia, Vol. 1.) 8vo. *The Author.*
3. Notes on a Collection of Ancient Stone Implements from Ejura, Ashanti. By Prof. HENRY Balfour, M.A. (S.P., Journ. African Soc., 1912.) 8vo. *The Author.*
4. Fossil Beads (?) from the Gravel of Bedfordshire. By J. T. BANTON. And Note on the so-called Fossil Beads. By Dr H. WOODWARD. (S.P., Geological Magazine, 1913.) 8vo. *The Authors.*
5. A Guide to the Prehistoric Rock Engravings in the Italian Maritime Alps. By C. BICKNELL. Bordighera, 1913. 4to. *The Author.*
6. Recent Discoveries of Prehistoric Horse Remains in the valley of the Stort. By the Rev. ALEXANDER IRVING, D.Sc., B.A. (S.P., Trans. Herts. Nat. Hist. Soc., 1914.) 8vo. *The Author.*
- Three papers by HAAKON SCHETKLIQ :
7. Arkeologiske Tidsbestemmelser av aeldre Norske Runeindskrifter. (S.P., Norges Indskrifter med de Aeldre Runer, III.) 1914. 4to.;
- 7 a. Et Vaabenfund fra Hoifjeldet. (S.P., Oldtiden, 1914.) 8vo.; and
- 7 b. Den foromerske jernalder i Norge. (S.P., Oldtiden, iii.) 1914. 8vo. *The Author.*
8. Some Axes and a Spear. By R. C. BOSANQUET. (S.P., Essays and Studies presented to William Ridgeway on his Sixtieth Birthday, 6 August, 1913.) 8vo. *The Author.*
9. The Archaeology of the Anglo-Saxon Settlements. By E. THURLOW LEEDS, M.A., F.S.A. Oxford, 1913. 8vo. *Purchased.*
10. Forty Years' Researches in British Saxon Burial Mounds of East Yorkshire, including Romano-British Discoveries, and a description of the Ancient Entrenchments on a section of the Yorkshire Wolds. By J. R. MORTIMER. London, 1903. 4to.;
11. Trattato dell' Imbrigliare, Maneggiare, et Ferrare Cavalli. Di M. CESARE FIASCHI, Gentilhuomo Ferrarese. Bologna. 1556. 8vo.; and
12. Etwas für Alle, das ist eine kurtze Beschreibung allerley Stands- Ambts- und Gewerbs-Persohnen, etc. Von P. ABRAHAM. Wurzburg, 1733. 3 vols. 8vo. *Baron Anatole von Hugel.* [Nos. 10—12.]
13. Memoire sur deux Coffrets Gnostiques du Moyen Age. Par M. JOSEPH DE HAMMER. Paris, 1832. 4to. *F. R. Whittaker, Esq.*
14. The origin of weight. By J. R. MCLEAN. (S.P., Numismatic Chron., 1912.) 8vo. *The Author.*
15. An Architectural and Historical account of St Mary's Church, Bury St Edmunds. By SAMUEL TYMMS, F.S.A. Bury St Edmunds, 1854. 4to. *John Jennings, Esq.*
16. Examples of Ancient Pulpits existing in England. By FRANCIS T. DOLLMAN. London, 1849. 4to. *Mr S. T. Cowles.*
17. On a certain carving in Saffron Walden Church. By the Rev. G. MONTAGU BENTON, B.A. (S.P., Trans. Essex Archaeol. Soc., Vol. xiii.) 8vo. *The Author.*
18. The Legend of Christian Art, illustrated in the Statues of Salisbury Cathedral. By the Rev. H. T. ARM-FIELD, M.A. Salisbury, 1869. 8vo. *Mr S. T. Cowles.*
19. Cambridge—Then and Now. By Bushell Anningson, M.A., M.D. (S.P., Public Health, 1905.) 8vo. *The Author.*
20. Indication of Houses of Historical Interest in London. Pts xxxix—XLII. London [1914]. 8vo. *The London County Council.*

2. ETHNOLOGY.

21. Customs of the World. Edited by WALTER HUTCHINSON, B.A. London [1913—1914]. 2 vols. 4to. *Purchased.*
22. Essays and Studies presented to William Ridgeway, So D., F.B.A., on his Sixtieth Birthday, 6 August, 1913. Edited by E. C. QUIGGIN, M.A. Cambridge, 1913. 8vo. *Baron Anatole von Hugel.*
23. The Handbook of Folklore. Revised and enlarged by CHARLOTTE SOPHIA BURKE. (Folk-Lore Society Publication.) London, 1914. 8vo.; and
24. Examples of printed Folk-lore concerning Fife, with some notes on Clackmannan and Kinrossshire. Collected by JOHN EWART SIMPKINS. (Folk-Lore Society: County Folk-Lore, Vol. vii.) London, 1914. 8vo. *The Folk-lore Society.* [Nos. 23, 24.]
25. India: Census 1911. By E. A. GAIT, C.S.I., C.I.E., I. C.S. Vol. 1, Parts 1—2. Calcutta, 1913. 2 vols. Folio. *The Secretary of State for India in Council,* 1914.
26. Il culto degli antenati e la successione nel diritto Giapponese. Di Dott. GUGLIELMO CASTELLI. (SP., II Filangieri.) Milan, 1914. 8vo. *The Author.*
27. Report on the Control of the Aborigines in Formosa. Bureau of Aboriginal affairs: Taihoku, Formosa, 1911. 8vo. From the Author (*S. Ishii, Esq.*).
- Four papers by I. H. N. EVANS, B.A.:
28. Notes on the Aborigines of the Ulu Langat, and Kenaboi Districts of Selangor and Jelubu;
29. Notes on the manufacture of the damascened spear and knife blades in the Malay States; and
30. Notes on the Aborigines of Lenggong and Kuala Kenering. (S.P., Journ. Fed. Malay States Mus., Vol. 5.) 8vo.; and
31. Folk Stories of the Tempassuk and Tuaran Districts of British North Borneo. (S.P., Journ. Royal Anthropol. Inst., 1913.) 8vo. *The Author.*
32. Notes Ethnographiques sur les Peuplos communement appeles Bakuba, ainsi que sur les Peuplades apparentees les Bushongo. (Doc. Ethnographiques concernant les populations du Congo Belge. Tome ii, Fasc. i) Par E. TORDAY et T. A. JOYCE. Bruxelles, 1910. 4to.;
33. Land and Peoples of the Kasai. By N. W. HILTON-SIMPSON. London, 1911. 8vo.; and
34. Among Congo Cannibals. By John H. WEEKS. London, 1913. 8vo. **Baron Anatole von Hugel.* [Nos. 82—34.]
35. Anthropological Reports on the Edo- and the Ibo-speaking People of Nigeria. By NORTHCOTE W. THOMAS, M.A. London, 1910—1913. 8 vols. 8vo.; and

36. Specimens of Languages from Southern Nigeria. By NORTHCOTE W. THOMAS, M.A., F.R.A.I. London, 1914. 8vo. *The Crown Agents for the Colonial*. [NOB. 35, 36.]

37. Zur Ethnographie des abflusslosen Gebietes Deutsch-Ostafrikas. Von Dr OTTO RECHE. (Abh. d. Hamburgischen Kolonialinstituts, Band xvii.) Hamburg, 1914. 8vo. **Baron Anatole von Hugel*.

Two papers by A. WERNER:

38. Tho Galla of the East African Protectorate. Parts i and ii; and

39. Some notes on the Wapokomo of the Tana Valley. By A. WERNER. (S.P., Journ. African Soc., 1914.) 8vo. *The Author*.

40. Some of the Tribal Marks of the South African Native Races. By G. A. Turner, M.B., D.P.H. (Aber.) (S.P., Transvaal Medical Journal, 1911.) Johannesburg, 1911. 4to. *Major General G. Robley*.

41. In den Wildnissen Brasiliens. Von Dr FRITZ KRAUSE. Leipzig, 1911. 8vo. **Baron Anatole von Hugel*.

42. Mittelamericanische Caraiben. Von Dr Carl SAPPER. (S.P., Archiv für Ethnographie, 1897.) 4to. *The Author*.

43. L'Archipel des Iles Marquises. Par M. P. E. EYRIAUD DES VERGNES. Paris, 1877. 8vo.; and

44. Sudsee-Urwald Kannibalen. Von FELIX SPEISER. Leipzig, 1913. 8vo. **Baron Anatole von Hugel*. [Nos. 43, 44.]

Two papers by G. LANDTMAN, Ph.D.:

45. How the Kiwai Papuans travel. Helsingfors, 1914. 8vo.; and

46. Wanderings of the Dead in the Folk Lore of the Kiwai-speaking Papuans. (S.P., "Festskrift Tillagnad Edvard Westermarck.") Helsingfors, 1912. 8vo. *The Author*.

Two papers by A. C. HADDON, Sc.D.:

47. The Houses of New Guinea. (S.P., "Festskrift Tillagnad Edvard Westermarck.") Helsingfors, 1912. 8vo.; and

48. The Out-rigger Canoes of Torres Straits and North Queensland. (S.P., Essays and Studies presented to William Ridgeway on his Sixtieth Birthday, 6 August, 1913.) Cambridge, 1913. 8vo. *The Author*.

Two papers by Prof. HENRY BALFOUR :

49. Kite-Fishing. (S.P., Essays and Studies presented to William Ridgeway on his Sixtieth Birthday); and

50. Frictional Fire-making with a Flexible Sawing-thong. (S.P., Journ. Roy. Anthropol. Inst., 1914.) 8vo. *The Author*.

51. A Monthly Chronicle or Historical Register for January, 1773, in which is given, under Friday, January 8, "An account of the extraordinary mummy brought to England by Capt. Young, Commander of his Majesty's sloop the Weesel, in October, 1772," and which was "deposited in Trinity College, Cambridge." (See Deposits, No. 40 83.) *A. G. W. Murray, M.A.*

3. GEOGRAPHY AND TRAVELS.

52. A new and complete Collection of Voyages and Travels. By JOHN HAMILTON MOORE. London, 1778. 2 vols. Folio;

53. The Quest and occupation of Tahiti by Emissaries of Spain during the years 1772—1776, told in dispatches and other contemporary documents. Translated into English and compiled with Notes and an Introduction by BOLTON GLANVILLE CORNEY, I.S.O.;

54. Travels of Peter Mundy in Europe and Asia, 1608—1667. Edited by Lt.-Col. Sir RICHARD CARNAC TEMPLE, Bart., C.I.E. Travels in Asia, 1628—1634, Vol. ii; and

55. New Light on Drake. A collection of documents relating to his voyage of circumnavigation, 1577-1580. Translated and edited by ZELIA NUTTALL. Hakluyt Society's Publications. London, 1913—1914. 3 vols. 8vo.

56. Voyage de Monsieur le Vaillant dans l'interieur de l'Afrique par le Cap de Bonne-Esperance. Dans les Annees 1780, 81, 82, 83, 84 et 85. Paris, 1790. 2 vols. 8vo.;

57. Travels through Sweden, Finland, and Lapland, to the North Cape in the years 1798 and 1799. By JOSEPH ACERBI. London, 1802. 2 vols. 4to.;

58. Voyage en Perse. Par LE PRINCE ALEXIS SOLTYKOFF. Paris, 1851;

59. Kaschmir und das Reich der Sicks. Von CARL FREIHERRN VON HUGEL. Stuttgart, 1840. 4 vols. 8vo.;

60. Der Stille Ocean und die Spanischen Besitzungen im Ostindischen Archipel. Von CARL FREIHERRN VON HUGEL. Wien, 1860. 8vo. **Baron Anatole von Hugel*. [Nos. 52—60.]

61. Tenerife and its six Satellites, or the Canary Islands, Past and Present. By OLIVIA M. STONE. London, 1889. 8vo. *Baroness Anatole von Hugel*.

62. At Home in Fiji. By C. F. GORDON CUMMING. Edinburgh, 1901. 8vo. *The Author*.

63. British Guiana; the North-Western District. By Everard F. IM Thurn, M.A., C.M.G. (S.P., Proc. Royal Geogr. Soc., 1892.) 8vo. *The Author*.

4. MUSEUM PUBLICATIONS.

64. Report of a Journey around the World to study Matters relating to Museums. By WM. T. BRIGHAM, Sc.D. (Occasional Papers of the Bernice Pauahi Bishop Museum, Vol. v, No. 5.) Honolulu, 1913. 8vo. *The Author*.

65. Leiden: Die Benin-Sammlung des Reichsmuseums für Volkerkunde in Leiden. Beschrieben und mit ausführlichen Prolegomena zur Geschichte der Handelswege und Volkerbewegungen in Nordafrika. Versehen von Jos. Marquart. (Veröffentl. des Reichsmuseums. S. ii, No. 7.) Leiden, 1913. 4to. *Professor Bevan*.

66. Khartoum: Wellcome Research Laboratories. Fourth Report, Volume B, General Science. London, 1911. 8vo. *Baron Anatole von Hugel*.

67. Queensland Museum: Memoirs, Vol. n. Edited by the Director, R. HAMLIN-HARRIS, Sc.D. Brisbane [1913]. 8vo. *The Director*.

68. New York, American Museum of Natural History. Anthropological Papers. Vol. 11, Pts. 5 and 6. 1914. 8vo. *The Director*.

69. The Public Utility of Museums. Official Report of the Debate in the House of Lords, May 20, 1914, and reprint of Letters from the *Times*, with the Earl of Beauchamp's reply to Lord Sudely. 8vo. *Lord Sudely*.

5. CATALOGUES, ETC.

Leiden; Katalog des Ethnographischen Reichsmuseums:

70. Borneo. Von Dr H. H. JUYNBOLL (Band I, II);

71. Die Inseln ringsum Sumatra. Von H. W. FISCHER (Band iv);

72. Javanische Altertümer. Von Dr H. H. JUYNBOLL (Band v);

73. Atjeh, Gajo- und Alaslander (Sumatra I). Von H. W. FISCHER (Band vi);

74. Bali und Lombok. Von Dr H. H. Juynboll (Band viii); and
 75. Catalogue dor Bibliotheek. Door J. C. E. Schmeltz Deel iii). Leiden, 1909—1912. 7 vols. 8vo. *H. E. The Minister of the Interior*. [Nos. 70—75.]
 76. Victoria National Museum: Guide to the Ethnographical Collection. By BALDWIN Spencer, M.A., F.B.S., Hon. Director of the Museum. Melbourne. [—]
 8vo. *Mr E. Coulson*.
 77. Africa in London: The Stanley and African Exhibition. London, 1890. 8vo. *Sir John Sandys, Litt.D.*
6. SERIAL PUBLICATIONS.
78. Archaeologia. (Vol. 64.) 1912—18. 4to. *The Society of Antiquaries*.
 79. The Publications of the Cambridge Antiquarian Society for the year 1914. *The Society*.
 80. Prehistoric Society of East Anglia: Proceedings for 1918—14. 8vo. *Baron Anatole von Hugel*.
 81. The Indian Antiquary. Bombay, 1914. 4to. *The Editor*.
 82. Folk-Lore. London, 1914. 8vo. *C. A. S.*
 Royal Anthropological Institute of Great Britain and Ireland, viz.:
 83. The Journal. London, 1914. 8vo. *Baron Anatole von Hugel*, and
 84. Man. London, 1914. 8vo. *Purchased*.
 85. Internationales Archiv fur Ethnographic. Leiden, 1914. 4to. *Purchased*.
 86. Anthropos. Nos. 1 and 2. Salzburg, 1914. 8vo.; and
 87. Royal Geographical Society: The Geographical Journal. London, 1914. 8vo. *Baron Anatole von Hugel*. [Nos. 86, 87.]
 88. The Museums Journal. London, 1913. 8vo. *Purchased*.
89. The Publications of 92 Societies (46 British and 46 Foreign) received in exchange by the Cambridge Antiquarian Society during the year 1914, as recorded in the Society's Annual Report. *C. A. S.*
7. REPORTS.
90. Cheltenham: Public Library, Art Gallery, and Museum. Report, 1913—14. 8vo. *The Director*.
 91. Colchester: Corporation Museum. Report, 1911—12. 8vo. *The Curator*.
 92. Ipswich: Museum, Art Gallery, and Free Library. 65th Annual Report, 1913—1914. 8vo. *The Secretary*.
 93. London: Horniman Museum and Library. Summary of the Progress of the Museum since the opening in 1901. 8vo. *The London County Council*.
 94. Norwich: Castle Museum. Report, 1913. 8vo. *The Curator*.
 95. Oxford: Ashmolean Museum Report, 1913. 8vo. *The Keeper*.
 96. Leiden: Rijks Ethnographisch Museum. Verslag 1912—1913. 8vo. *The Director*.
 97. Leipzig: Städtisches Museum für Volkerkunde. Jahrbuch, 1911—1912. lid. 5. Leipzig, 1913. 8vo. *The Director*.
 98. Neuchatel: Musee Ethnographique. Rapport Annuel, 1913. 8vo. *The Director*.
 99. Washington (Smithsonian Institution): U. S. National Museum. Annual Report, 1912-1913. 8vo. *The Secretary*.
 100. Egypt: British School of Archaeology, etc. Report of the 19th year, 1913. 8vo. *The Secretary*.
 101. Papua: Annual Report, 1912—1913. Folio. *The Colonial Secretary*.
 102. International Congress of Americanists. Proceedings of the XVIII Session, London, 1912. London, 1913. 2 vols. 8vo. *Baron Anatole von Hugel*.

IV. DRAWINGS, PHOTOGRAPHS, ETC.

1. A portrait (9"x9") in water-colours of an Arawa (Maori) girl with tattooed chin, wearing a flax mat and jade ornaments, by Major General Robley. *Purchased*.
 2. Drawings of eight varieties of Maori facial tattoo patterns. Drawn by the donor, *Major General Robley*.
 3. A series of water-colour sketches of Fijian pottery, carved bowls, ornaments, etc., forming part of the Gordon, the Hugel, and the Maudslay Collections, and a number of landscapes shewing sites of native potteries, etc. Drawn by the donor at Government House, Nasova, Fiji, 1875—1877. 2 vols. 4to. *Miss C. F. Gordon Cumming*.
 4. A set of eighty-one half-tone plates (8"5 x 5"5) depicting the natives and their customs, being the illustrations of the donor's works on Nigeria. *Major A. J. N. Tremearne, B.A.*
- PHOTOGRAPHS
5. TEN (3"4 x 3"4) OF THE SPORTS, HELD AT THE YEARLY FAIR of Paniala, Dera Ismail, Khan District, N.W. Frontier Province. Taken by the donor, 1907- *E. B. Howell, M.A.*
6. Three (11"3 x 9"1): two groups of Naga and one group of Singphos. Taken 1893. *Miss Beatrice Froude*.
 7. Eleven (6"5 x 4"-7): eight of Negritos and three of Snkais of Pahang (Fed. Malay States), taken by the donor in 1914. *I. H. N. Evans, B.A.*
 8. Eight: four (8"x6") of natives of Port Moresby, Woodlark Islands, and New Caledonia, and four (6"x4") of Queensland natives. *Mr Edward Coulson*.
 9. Two (8"-4 x 6"0) of Hawaiian women. *Baron Anatole von Hugel*.
 10. Six post-cards of Archaeological and Ethnological interest from Ceylon. *I. H. N. Evans, B.A.*
 11. Twenty-two post-cards of Australian natives. *Mr Edward Coulson*.

2. List of Objects received on Deposit from January 1 to December 31, 1914.

*** The objects here enumerated were formerly exhibited in the library of Trinity College, and are deposited in the Museum by the Master and Fellows of the College.

I. ARCHAEOLOGY.

PREHISTORIC.

1. A beaded palstave, Colchester.

2. A plain socketed celt, ----- .

LATE CELTIC.

3. An enamelled bronze disc with a raised trumpet pattern (1"-9), Edix Hill Hole, Orwell, Cambridgeshire;

4, 5. Two small beaded urns with wide mouths and tall necks (2"-9 x 5", 2"-8 x 3"5), Sittingbourne, Kent, 1876.

ROMAN.

6. A bronze ornament representing a cat's head (1"1), Newnham Croft, Cambridge;

7, 8. An ornament in form of a cockle shell (1"2) and an ornate, broad-rimmed boss (2") of bronze, Haslingfield, Cambridgeshire;

9 1—6. Four finely moulded bronze brooches of distinct forms: the larger (3"-2 x 2") with tubular bar-head, enamelled bow, and fiat lozenge-shaped base; a pin with roughly moulded bead, a pair of tweezers, and a fish-hook (imperfect) of bronze, Blagdon, near Bristol;

10 1—15.

1—5. A gold chain with amethyst beads; three pendants: one ornate kite-shaped receptacle (1" 6 x 0"-9) with fiat binged cover and bock (? seal-case), one spoon-shaped, and one crescent-shaped; and a beaded bow fibula (1"7 x 0"7);

6-8. A finger-ring key; and two keys: a larger (2"-8 x 1"5) with openwork, circular bow, and a smaller (1"-4 x 0"-8) plain, with square stem (? Richborough);

9. A bronze-gilt strigil with knobbed cylindrical haft (11"-6);

10-12. A bronze handle of an iron knife representing

in open-work a hare chased by a hound (2"-8 x 0"-6); a spoon of white metal with cylindrical taper handle (6"1 x 0"-9); and portion of a surgical bronze instrument;

13. A steel-yard weight in form of a man's bust; and

14, 15. Two fragments of red Samian vessels: one with spout in form of a lion's mask (FIGURED: Battely, Antiquitates Rutupinae, Oxford, 1745). Richborough, Kent;

11. A large orange-shaped bead of green glass with four black and yellow bosses (1"-3). ? Roman. Tarporley, Cheshire, 1773;

12, 13. Two drinking cups: one egg-shaped and one with six circular indentations, Stourbridge Common, Cambridge ;

14. A mortarium of light clay with moulded rim (3"-9x12"-5), Barton, Cambridgeshire;

15—19. A large globular amphora (30" x 21"-3) and an iron chisel found in it; two globular narrow-necked vases; and two wide-mouthed urns, Haslingfield, Cambridgeshire;

20, 21. Two slim amphorae: one 35"4 in height, the other fragmentary, Barrington, Cambridgeshire;

22. A portion of a tessellated pavement, Colchester, Essex.

SAXON.

23 1—17.

1—9. Two solid, saucer-shaped brooches with boldly decorated gilt faces (1".5); a bronze-gilt square-headed brooch of unusual size (6"9x3".2) decorated with human masks, etc.; a pair of bronze-gilt ornate, peaked clasps (imperfect) with a number of small drilled bronze plates (?off a belt); three quartz beads, the largest (1".3) faceted, and a number of amber and of coloured glass beads;

10, 11. Two spindle-whorls of shale;

12—16. Three socketed spear-heads, a ferrule and a knife of iron;

17. A small roughly moulded clay cup of unusual form, bearing a perforated lug-shaped handle (? Saxon), Harlton, Cambridgeshire;

24 1—21.

1—17. Eleven bronze brooches: one pair gilt, saucershaped ("applied form") with finely decorated discs (2"4); one gilt with unusually large, square head and minute bow (4"-4 x 2"6); and eight smaller: two cruciform with knobbed terminals, and six square-headed ; and five bead necklaces: three of amber and two of coloured glass with a number of loose beads of various kinds;

18—21. Two shield bosses, a tanged sword-blade (35".8), and a number of spear heads and knife-blades in a bad state of preservation, Barrington, Cambridgeshire;

25 1—46.

1—20. Seven bronze brooches: one ornate solid saucer-shaped (1"-5), and fragments of another; one disc with cruciform pattern in openwork (1".6); two square-headed: one ornate, gilt, with cruciform expansion (4".4 x 2"-4), and one, smaller, plain (imperfect); and two cruciform: one with knobbed, the other with expanded terminals; three necklaces: two of amber and one of blue glass beads, with a number of disassociated glass and clay beads of various forms; a fluted band-bracelet with overlapping ends and fluted and incised portions of others; a stout bronze (?bangle); a silver ring consisting of a plain coiled band; two pairs of stamped, oblong clasps; a number of bronze plates (?off a belt); a pair of bronze tweezers, an ear-pick and a bodkin on a bronze wire ring;

21—39. Five shield-bosses; a stout, tanged, double prong; eight socketed spear-heads; and five tanged knives;

40, 41. A large hook-key, and a pair of shears of iron;

42. The bronze hoops, ornamental fittings, and portions of the wooden staves of a bucket 4"7 in diameter; (Roman) vessel, Edix Hill, Orwell, Cambridgeshire;
- 43—46. Three cinerary urns: one (4"-8 x 5") bearing stamped and incised decoration, and a larger and a smaller undecorated; and a saucer made from the base of a large (9"lx8"8), Sandy, Bedfordshire. (FIGURED: Battely; Antiquitates Rutupinoe, Tab. X.)

MEDIAEVAL AND LATER.

- 27, 28. Two cylindrical leaden vessels: one bearing a pair of iron ring-handles, decorated in relief with a band of sixteen ornate triangles with disc terminals (10"S x 17"), Six Mile Bottom, Cambridgeshire; and one provided with a pair of leaden lugs for ring handles, which are missing, decorated in relief with ornate bands (12"-lx25"). Origin unknown (?early Mediaeval);
29. A prick-spur of iron inlaid with silver in a chequered pattern, 13th century, -----;
- 30—36. Seven pouch-bars of bronze: four long, two of which are rounded and two flat, the latter inscribed and enamelled; three with short swivel-bars: one attached to bronze pouch-rim, one single, and one provided with an extra swivel-bar, 14th—15th century;
37. Portion of a leaden cistern, dated 1702 and decorated with portrait medallions, etc.,-----;
38. A large globular, wide-mouthed vessel, the neck provided with four loops (?date). FIGURED by Battely;
39. A collection of miscellaneous objects, consisting of earthenware and glass vessels (mostly imperfect), knives, keys, pipes, wig-curlers, etc., ranging in date from the 14th to the 18th century. Found at various dates at Trinity College, Cambridge.

II. ETHNOLOGY.

- 40 1—83. The Captain Cook Collection presented to Trinity College by the Earl of Sandwich, First Lord of the Admiralty, comprising eighty-three objects:

NEW SOUTH WALES.

1—4. Three fish-gigs: two armed with three, and one with four bone-tipped wooden spikes; and a javelin with taper wooden head.

TAHITI.

5—13. Hanks of fine twine plaited of human hair, used by women in decorating their heads; four ear pendants threaded on human hair string: three fashioned of minute shells (three distinct species), and one of a nut; a broad gorget (a crescent with truncated ends) composed of bands of feathers, of pearl-shell discs, and of sharks' teeth; two necklaces formed of ovals of graduated size, cut from various species of cowrie shells; and a hank of fine ornate cocoanut-fibre braid;

14—25. An oblong headrest or stool with a pair of square looped legs (12"-4 x 4"-8); a drinking cup made of a cocoanut; three food-pounders of basalt with ridged, forked, and faceted pommels; a wooden adze for chopping bread-fruit (12"-9); two stone-headed adzes (21"-8, and 22"-5); a chisel of human bone in a wooden haft bound with sinnett (6"-9); a ray-skin rasp; and a bark-cloth mallet (14"-9 x 1"-9), with a sample of plain white cloth;

26, 27. A cylindrical drum with fish-skin tympanum and openwork base (25"-8 x 8"-3), and a nose flute of bamboo (15"-6);

28. A canoe bailer (17"1 x 9"2);

29—32. Four fish-hooks of shell;

33. A spear (77"5) consisting of a shaft of light wood armed with a long, cylindrical, taper point of hard wood and cocoanut braid lashing. Described as follows in the original inventory of Lord Sandwich's gift: "*Verrohah*, a kind of Lance which the Inhabitants pitch at a mark in one of their Games";

34. A wooden carving (20"-5 x 7"7) representing a pair of conventionalised human figures and a quadruped (portion of some ceremonial object).

NEW ZEALAND.

35—48. A small ornate comb, carved in wood (3"7 x 6"2); a curved (pod-shaped) ear-pendant of jade (2"-5); three necklaces of distinct varieties of shells; a globular looped pendant of calcite (1"2); a curved bodkin, used as a cloak- fastener, of cachelot ivory with flax string attached; a bone toggle with plaited string of flax; four belts: one of woven flax and three of plaited grass; two tattooing implements: one with very broad, the other with narrow, finely toothed, bone blades;

49—51. Two small adze-heads of jade, and cores of obsidian of which small graving tools are made;

52, 53. A square bag of ornate plait-work; and hanks of flax obtained from the leaves of the phormium tenax;

54, 55. A large horn (a triton shell) with side perforation and annular mouthpiece of gum (13"-5 x 7"3); and a carved war-whistle (4"-1 x 1"-1);

56—84. Five hand-clubs: two *mere* (flat truncheon shaped): one of basalt (12"-5x8"7), and one of cachelot bone (16"x 3"-5); two cleaver-like: one of wood (16"7), and one of bone (16"-9); and one *patuputu* (fiddle-shaped) of wood (13"-8 x 5"7); a *hani*, a slim bladed staff with well carved mask-pommel (72"-8); two *pouwhenua* (hani-like weapons) with wide blades and plain, taper butts, the shafts bearing unusual carving (67" 5); and a *tewhatewha* (54".1) (a long shafted battle axe);

5. An elaborately carved object with large flat head in form of a human mask and a taper handle bearing a pair of square perforations (12"2 x 3"1), ? use; and

60—73. Two large paddles with boldly carved neck and haft-end (74"x6"5, and 70"5x6"); a flat oval sinker, of calcite, attached to a flaxen snood; four fish-hooks of wood with bone points and snoods; and the wooden barbed, taper head of a bird spear.

The above objects were collected during Captain Cook's first voyage in H.M.S- *Endeavour*, 1768 1771.

FRIENDLY ISLANDS.

74. A ridged club with expanding truncated bead, sharp sides and headed neck, finely carved throughout in panels of various patterns which include a number of human and animal figures (14"x4"-6).

CHINA.

75—80. Five embroidered silk shoes, and a model of a lady's deformed foot.

LAPLAND.

81. A tambourine, the skin tympanum painted with figures and symbols (16"2 x 12"-6) and an incised beater carved in bone; and

82. A pair of skin shoes.

TENERIFE.

83. A Guanche mummy, brought to England by Captain Young of H.M. Sloop *Weesel*, October 1772 (see Books, No. 51).

MUSEUM OF ARCHAEOLOGY AND OF ETHNOLOGY, CAMBRIDGE

PUBLICATIONS

ANNUAL REPORTS WITH LISTS OF ACCESSIONS AND DEPOSITS. 4to:

1. Separate Prints from the University Reporter, 1885 1914
I and IT (*out of print*); III to VI 3*d. each* ; VII— VIII, *with supplement, 6 d.*; IX to XIII 3*d. each*; XIV to XVII, *with supplements, 6d. each-*, XVIII to XXII 3*d. each* (The set III—XXII 5*s.*); XXIII (*sec below*) 1*s.* ; .XXIV 6*d*; XXV 6*d.* ; XXVI and XXVII (Report only) 3*d. each* ; XXVIII (*with three Appendixes*) 6*d.* ; XXIX 6*d.*, XXX 6*d.*
2. Illustrated Museum Issue
XXIII (*with six plates*) 1*s.* ; XXIV (*with nine plates*) 1*s.* 6*d.* ; XXV (*with ten plates*) 1*s.* 6*d.* ; XXVIII (*with live plates*) 1*s.* ; XXIX (*with frontispiece*) 9*d.*; XXX (*with frontispiece*) 9*d.*

CATALOGUES:

- Local Roman Pottery. 1892. 4to. (*with nine plates*). Out of print.
- The Walter K. Foster Bequest: Antiquities. 4to. 1891. 1*s.*
- The Skeat Ethnological Collection from the Malay Peninsula. 4to. 1899. 6*d* The Murray Collection of Irish Antiquities. 4to. 1901. 3*d.*
- The Starr Collection of Mexican Folk-Lore (*Precis*). 4to. 1901. 3*d.*
- The Temple Collection of the Manufactures of the Andaman Islanders. 4to. 1902. 6*d.* The Man Collection of the Manufactures of the Nicobar Islanders, 4to. 1902. 6*d.*